

### HEADSTAY DIMENSIONS

Furling Unit	Typical Boat Length	Headstay Diameter		Headstay Length		Clevis Pin Diameter
		Wire Size (1 x 19 SS)	Rod Size	Standard	Maximum	
00 Heli-Foil	20- 26' trailered 6 - 8 m	1/8", 5/32", 3/16" 3, 4, 5, mm	—	31'6" 9.60 m	35' 10.67 m	1/4", 5/16", 3/8", 7/16" 6, 8, 9.5, 11 mm
00 AirFoil	20- 26' 6 - 8 m	1/8", 5/32", 3/16" 3, 4, 5, mm	-4, 4.37 mm	31'6" 9.60 m	35' 10.67 m	1/4", 5/16", 3/8", 7/16" 6, 8, 9.5, 11 mm
0	22' - 36' 6.5 - 9.1 m	5/32", 3/16", 7/32" 4, 5, 6* mm	-4, -6 4.37, 5.03 mm	38'4" 11.68 m	45'4" 13.82 m	5/16", 3/8", 7/16" 7.9, 9.5, 11.1 mm
1	28' - 36' 8.3 - 11 m	1/4", 9/32" 6, 7, 8* mm	-8, -10 5.72, 6.35 mm	45'8" 13.92 m	52'8" 16.05 m	1/2" 12.7 mm
1.5	under 38' 11.60 m	5/16" 8 mm	-12 7.14 mm	46'2" 14.07 m	53'2" 16.21 m	5/8" 15.9 mm
2	35' - 46' 10.6 - 14.2 m	5/16", 3/8" 8, 10 mm	-12, -17 7.14, 8.38 mm	60'2" 18.34 m	67'2" 20.47 m	5/8" 15.9 mm
2.5	under 49' 14.9 m	7/16" † 11, 12* mm	-22 9.53 mm	60'10" 18.54 m	67'10" 20.68 m	3/4" 19 mm
3	45' - 60' 13.7 - 18.3 m	7/16", 1/2" † 11, 12 mm	-22, -30 9.53, 11.10 mm	74'8" 22.76 m	81'8" 24.89 m	3/4", 7/8" 19, 22.3 mm
3.25	55' - 70' 16.8 - 21.3 m	9/16" † 14 mm	-40 12.70 mm	74'9" 22.78 m	88'9" 27.05 m	7/8", 1" 22.3, 25.4 mm
3.5	65' - 80' 19.8 - 24.4 m	5/8" † 16, 19 mm	-48 14.30 mm	76'10" 23.42 m	94'10" 28.91 m	7/8", 1", 1 1/8" 22.3, 25.4, 28.6 mm
4	75' - 90' 22.9 - 27.4 m	22 mm †	-60, -76 16.75, 17.91 mm**	87'5" 26.64 m	114'5" 34.87 m	1-1/4" 31.75 mm
4.5	85' - 110' 25.9 - 33.5 m	25 mm †	-76, -91, -115 17.91, 19.50, 22.20 mm	102'10" 31.34 m	126'10" 38.67 m	1-1/4", 1-3/8", 1-9/16" 31.8, 34.9, 39.7 mm

\*Type 316 stainless steel only † Sizes do not apply to Dyform. Contact Harken or see catalog. \*\*Continuous rod only. If sectional order 4.5

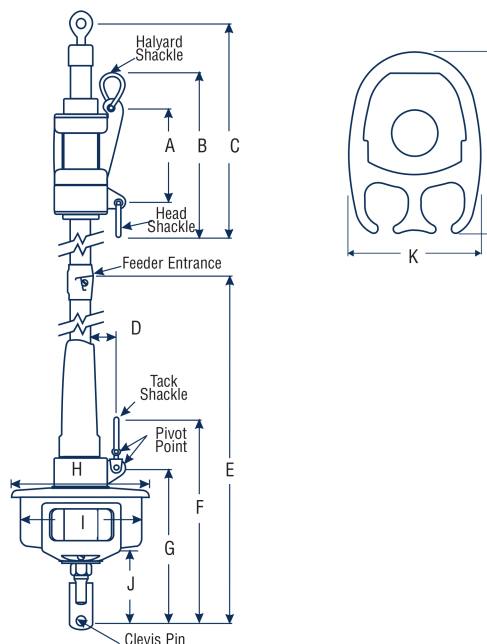
### FURLING DIMENSIONS

Unit	A	B	C	D	E		F		G		H	I	J	
					MAX	MIN	MAX	MIN	MAX	MIN			MAX	MIN
00AL	3-3/4" 95 mm	6-5/16" 160 mm	9" 229 mm	5/8" 16 mm	28" 711 mm	28" 711 mm	7-3/8" 187 mm	—	6-1/8" 156 mm	—	5-3/4" 146 mm	5-11/16" 144 mm	2-1/2" 63 mm	—
	3-3/4" 95 mm	6-5/16" 160 mm	9" 229 mm	5/8" 16 mm	38" 965 mm	33" 838 mm	7-3/8" 187 mm	—	6-1/8" 156 mm	—	5-3/4" 146 mm	5-11/16" 144 mm	2-1/2" 63 mm	—
0	4-1/16" 103 mm	6-5/8" 168 mm	8-7/8" 225 mm	1-1/16" 27 mm	38-5/16" 989 mm	30-13/16" 783 mm	10-9/16" 268 mm	9-5/16" 236 mm	8-1/4" 209 mm	7" 178 mm	5-13/16" 147 mm	5-11/16" 144 mm	4" 102 mm	2-3/4" 70 mm
1	4-7/8" 124 mm	7-3/8" 187 mm	9-15/16" 252 mm	1-1/4" 32 mm	40-1/2" 1029 mm	32" 813 mm	12-1/4" 311 mm	10-3/4" 273 mm	9-7/8" 251 mm	8-3/8" 213 mm	7-7/16" 188 mm	7-1/4" 181 mm	5-1/4" 133 mm	3-3/4" 95 mm
1.5	4-7/8" 124 mm	7-3/8" 187 mm	9-15/16" 252 mm	1-1/4" 32 mm	46-3/8" 1178 mm	37-7/8" 962 mm	12-1/2" 318 mm	11" 279 mm	10-1/8" 257 mm	8-5/8" 219 mm	7-7/16" 188 mm	7-1/4" 181 mm	5-1/2" 140 mm	4" 102 mm
2	6-1/4" 159 mm	9-5/8" 244 mm	12-1/4" 311 mm	1-5/8" 41 mm	46-1/2" 1181 mm	36" 914 mm	16-1/4" 413 mm	14-1/4" 362 mm	13-1/8" 333 mm	11-1/8" 282 mm	9-1/2" 241 mm	9-1/4" 235 mm	6" 152 mm	4" 102 mm
2.5	6-1/4" 159 mm	9-5/8" 244 mm	12-1/4" 311 mm	1-5/8" 41 mm	55-3/4" 1416 mm	44-1/4" 1124 mm	18" 457 mm	15-1/2" 394 mm	14-7/8" 378 mm	12-3/8" 314 mm	9-1/2" 241 mm	9-1/4" 235 mm	7-3/4" 197 mm	5-1/4" 133 mm
3	7-3/4" 197 mm	12" 305 mm	16-1/8" 410 mm	1-3/4" 44 mm	53-1/4" 1352 mm	39-3/4" 1010 mm	20-1/2" 521 mm	17-1/2" 445 mm	17" 432 mm	14" 356 mm	12" 305 mm	11-7/8" 302 mm	9" 229 mm	6" 152 mm
3.25	7-3/4" 197 mm	12" 305 mm	16-1/8" 410 mm	1-3/4" 44 mm	55-1/4" 1403 mm	41-3/4" 1060 mm	20-1/2" 521 mm	17-1/2" 445 mm	17" 432 mm	14" 356 mm	12" 305 mm	11-7/8" 302 mm	9" 229 mm	6" 152 mm
3.5	7-3/4" 197 mm	12-1/8" 308 mm	17" 432 mm	1-3/4" 44 mm	59" 1499 mm	53" 1346 mm	23" 584 mm	19-3/4" 502 mm	19-1/2" 495 mm	16-1/4" 413 mm	12" 305 mm	11-7/8" 302 mm	11-1/2" 292 mm	8-1/4" 210 mm
4	10-5/8" 270 mm	15-1/2" 394 mm	31" 787 mm	2-3/4" 70 mm	68" 1727 mm	60" 1524 mm	29" 737 mm	25" 635 mm	24" 610 mm	20" 508 mm	13-7/16" 342 mm	13-1/4" 337 mm	14" 356 mm	10" 254 mm
4.5	13-1/8" 333 mm	17-3/8" 441 mm	24" 610 mm	1" 25 mm	68-1/2" 1740 mm	63-1/2" 1613 mm	31" 787 mm	26" 660 mm	26" 660 mm	21" 533 mm	13-7/16" 342 mm	13-1/4" 337 mm	15-1/2" 394 mm	10-1/2" 267 mm

### Foil Dimensions

Unit	K	L	Foil Length	Luff Tape
00	3/4" 20 mm	1" 25 mm	—	#5 5/32" (4 mm)
00AL	3/4" 20 mm	1" 25 mm	3.5' 1.07 m	#6 6/32" (5 mm)
0	3/4" 20 mm	1" 25 mm	7' 2.13 m	#6 6/32" (5 mm)
1	1-3/16" 21 mm	1-1/8" 28 mm	7' 2.13 m	#6 6/32" (5 mm)
1.5	1-3/16" 21 mm	1-1/8" 28 mm	7' 2.13 m	#6 6/32" (5 mm)
2	1-1/16" 27 mm	1-7/16" 36 mm	7' 2.13 m	#6 6/32" (5 mm)
2.5	1-1/16" 27 mm	1-7/16" 36 mm	7' 2.13 m	#6 6/32" (5 mm)
3	1-1/4" 33 mm	11-1/16" 43 mm	7' 2.13 m	#6 6/32" (5 mm)
3.25	1-1/4" 33 mm	11-1/16" 43 mm	7' 2.13 m	#6 6/32" (5 mm)
3.5	1-9/16" 40 mm	11-5/16" 50 mm	9' 2.74 m	#6 6/32" (5 mm)
4	11-5/16" 50 mm	2-7/16" 61 mm	9' 2.74 m	#6 6/32" (5 mm) #7 7/32" (6 mm)
4.5*	21-1/16" 68 mm	3-3/16" 81 mm	12' 3.66 m	#6 6/32" (5 mm) #7 7/32" (6 mm)

\*Rod sizes -91, -115 with splicing connectors require a special foil. Contact Harken for specific information.



### ■ Contrôle du diamètre de perçage de la cadène

Vérifiez que le diamètre de perçage de la cadène du bateau est compatible avec le diamètre de l'axe commandé. HARKEN ne recommande pas de repercer la cadène ni l'enrouleur.

Vérifiez que le bord inférieur de la chape ne vient pas toucher le pont du bateau quand l'enrouleur est incliné au bon angle. Si c'est un problème, il faut ajouter un cardan sous l'enrouleur et raccourcir le profil en conséquence. Voir page: 8.

### ■ Vérifiez la place disponible dans le balcon avant

Vérifiez que l'ensemble tambour n'est pas gêné par le balcon avant. Si vous avez un arrêt d'ancre utilisez deux cardans pour réhausser l'enrouleur. Voir page: 8.

### ■ Note

L'enrouleur 00AL tourne autour de l'étai équipé d'un ridoir (non fourni par Harken). Les connecteurs sont prisonniers sur le câble. Que ce soit sur un câble avec embouts sertis ou un rod, les connecteurs doivent être enfilés sur l'étai avant sertissage ou repoussage à froid de l'embout inférieur. Cette opération est très facile à la fabrication de l'étai. Si vous avez choisi de réutiliser l'étai existant, il sera raccourci de la longueur de pénétration du câble dans l'embout à sertir, et un cardan ou une paire de lattes ridoir seront nécessaires pour compenser. Dans ce cas on peut aussi bien changer la terminaison supérieure du câble que l'embout fileté du bas du câble. Harken ne fournit aucun embout à sertir ou manuel dans ce but. Si un embout Norseman ou Sta-Lock est utilisé, l'installation peut être entièrement menée à proximité du bateau sans avoir recours à un gréer.

### ■ Si vous réutilisez votre câble

Votre enrouleur est conçu pour réutiliser votre câble d'étai existant. Examinez minutieusement votre câble pour vous assurer qu'il est en bon état avant de le réutiliser avec l'enrouleur. Veillez aux traces de corrosion, aux fissures dans les embouts sertis, aux points d'abrasion et aux torons coupés sur le câble lui-même. L'état du câble varie en fonction du climat et de l'utilisation, mais en règle générale ne réutilisez pas un câble qui a séjourné dans l'eau salée pendant plus de quatre saisons ou dans tous les cas un câble de plus de six ans.

### ■ Prüfen des Toggel-Bolzens

Passt der gelieferte Bolzen genau zum Beschlag am Bug? Harken rät davon ab, irgend welche Anpassungen vorzunehmen um abweichende Bolzen aufnehmen zu können.

Berührt der Roller mit seinem tiefsten Punkt nichts, wenn er im Winkel des Vorstags gehalten wird? Ggf. muss ein weiterer Toggel unterhalb des Rollers angebracht und das Vorstag entsprechend gekürzt werden. Siehe Seite 8.

### ■ Prüfen der Platzverhältnisse im Bugkorb

Passt die Trommel in den Bugkorb? Lässt sich das Ankerschapp noch öffnen? Nötigenfalls mit zusätzlichem Toggel oder Verlängerung die Trommel höher setzen. Siehe Seite 8.

### ■ Note

Der Typ 00AL reitet auf Vorstag und Spanner (nicht von Harken geliefert). Die Verbinder sind auf dem Draht 'gefangen'. Bei Walz-Terminals und Rod müssen die Verbinder vor dem Walzen/Stauchen aufgebracht werden. Das geschieht am einfachsten bei der Herstellung des Vorstags. Falls ein bestehendes Stag wieder verwendet werden soll, wird es um die abgeschnittene Länge gekürzt, und muss entsprechend durch ein Toggle kompensiert werden.

Bei Nachrüstungen kann Aug- oder Bolzen-Terminal gewalzt/gestaucht werden. Harken liefert dazu keine Terminals. Bei Verwendung eines Norseman oder Sta-Lock Auges kann die Installation an Bord erfolgen, ohne das Stag zu einem Ausrüster zu bringen.

### ■ Der Zustand des Stag-Materials

Ihr Roll-System macht von Ihrem bestehenden Stag gebrauch. Versichern Sie sich also gründlich seines guten Zustands bevor Sie es mit dem Roller einsetzen. Suchen Sie insbesondere nach Korrosion und Haarrissen in der Nähe von aufgedrückt Teilen sowie Abnutzung und Schäden am Draht.

Der Zustand des Stags hängt ab von Klima und Einsatz, aber eine Faustregel rät zum Ersatz, wenn das Stag mehr als vier Saisons im Salzwasser eingesetzt war oder älter ist als sechs Jahre.

### ■ Controllo del perno della landa

Controllare la landa dello strallo sulla barca assicurandosi che il perno speciale ordinato sia quello giusto. La Harken sconsiglia di trapanare la landa o modificare l'avvolgifiocco per adattare perni di altre dimensioni.

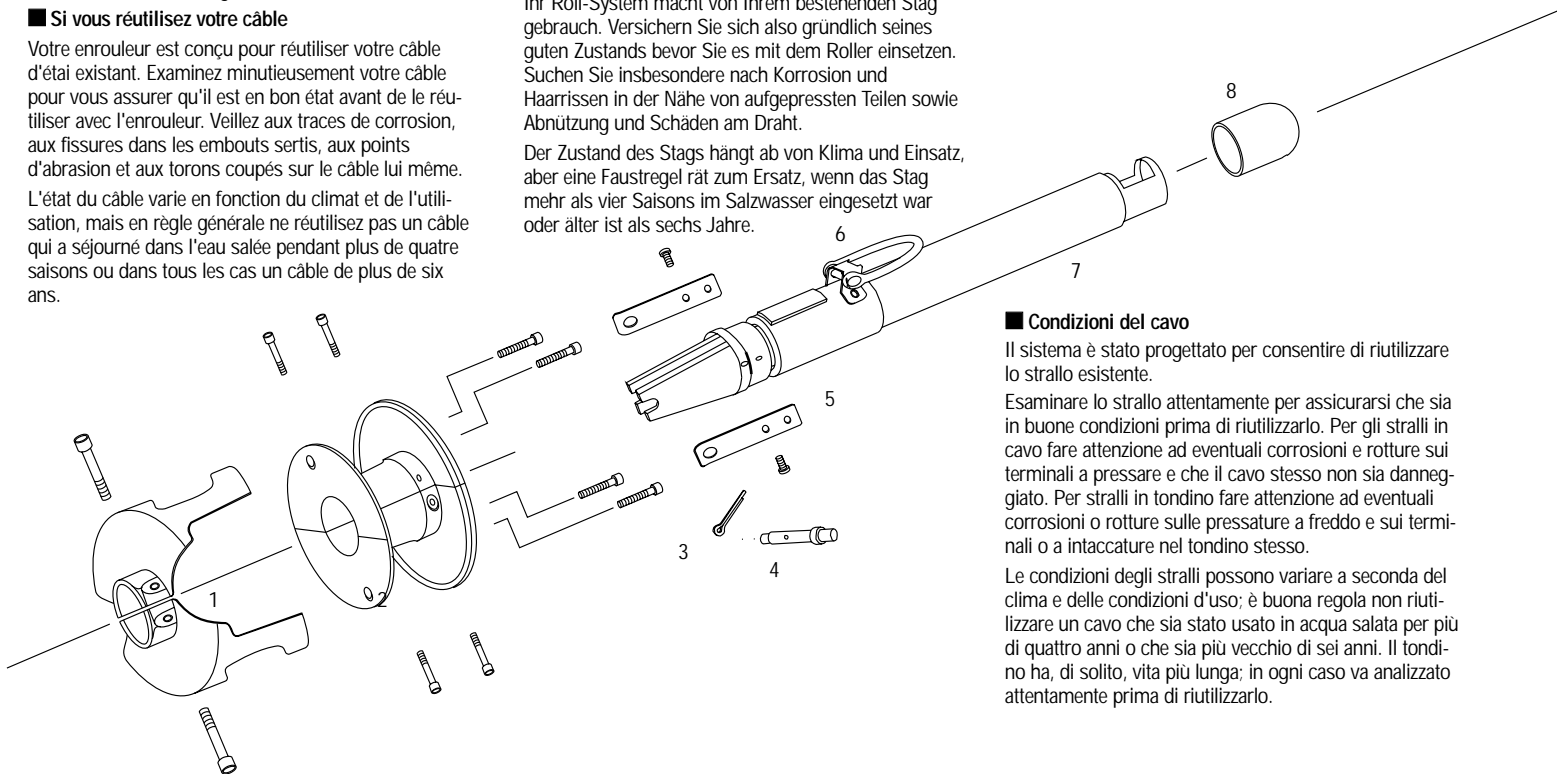
Controllare che l'angolo inferiore dell'avvolgifiocco, nella corretta posizione di lavoro, non urti la parte della landa che giace sulla coperta. Se si verificano dei problemi bisogna aggiungere uno snodo sotto l'avvolgifiocco e accorciare, di conseguenza, lo strallo. Vedi pag. 8.

### ■ Controllo dello spazio intorno al pulpito di prua

Controllare con attenzione che la parte inferiore del tamburo stia all'interno del pulpito di prua. Se è presente un sistema di fissaggio per l'ancora, verificare che non sia d'intralcio e se necessario usare uno snodo o una prolunga della landa per alzare l'avvolgifiocco. Vedi pag. 8.

### ■ Nota

L'avvolgifiocco 00AL si monta sopra lo strallo e l'arridatoio (non forniti da Harken). I connettori vanno montati sul cavo o tondino, prima di impiombare o pressare a freddo. Questa operazione risulta più semplice quando si usa uno strallo nuovo; se si decide di riusare lo strallo esistente, bisogna accorciarlo della lunghezza corrispondente al perno filettato e usare poi una landa per compensare. Sullo strallo possono essere impiombati sia un perno filettato che un occhio a seconda delle necessità. La Harken non fornisce i terminali per questo scopo. Se si usa un terminale a occhio Norseman o Sta-Lok, l'installazione può essere completata sulla barca senza ricorrere ad un attrezzatore.



### 1 Line Guard Assembly

Guide antiusure de drosse  
Leinen-Führung  
Guida per la scotta

### 2 Furling Drum

Tambour  
Trommel  
Tamburo

### 3 Cotter Pin

Goupille fendue  
Sicherungsstift (Splint)  
Coppiglia

### 4. Clevis Pin

Axe épaulé  
Toggelbolzen  
Perno

### 5 Spring Tang

Lame Élastique  
Blattfeder  
Piastra a Molla

### 6 Tack Shackles

Manille d'amure  
Fuss-Schäkel  
Grillo mura

### 7 Torque Tube/Hub Assembly

Tube de Torsion  
Mitnehmerhülse/Nabe  
Tubo di torsione

### 8 Torque Tube Cap

Capuchon de Tube de Torsion  
Kappe auf Mitnehmerhülse  
Cappuccio del tubo di torsione

### 9 Torque Tube Foil Key

Clavette de Tube de Torsion  
Verschlusskeil (in Mitnehmer-Hülse)  
Chiave per il tubo de torsione dell'estruso

### 10 Bottom Foil Extrusion

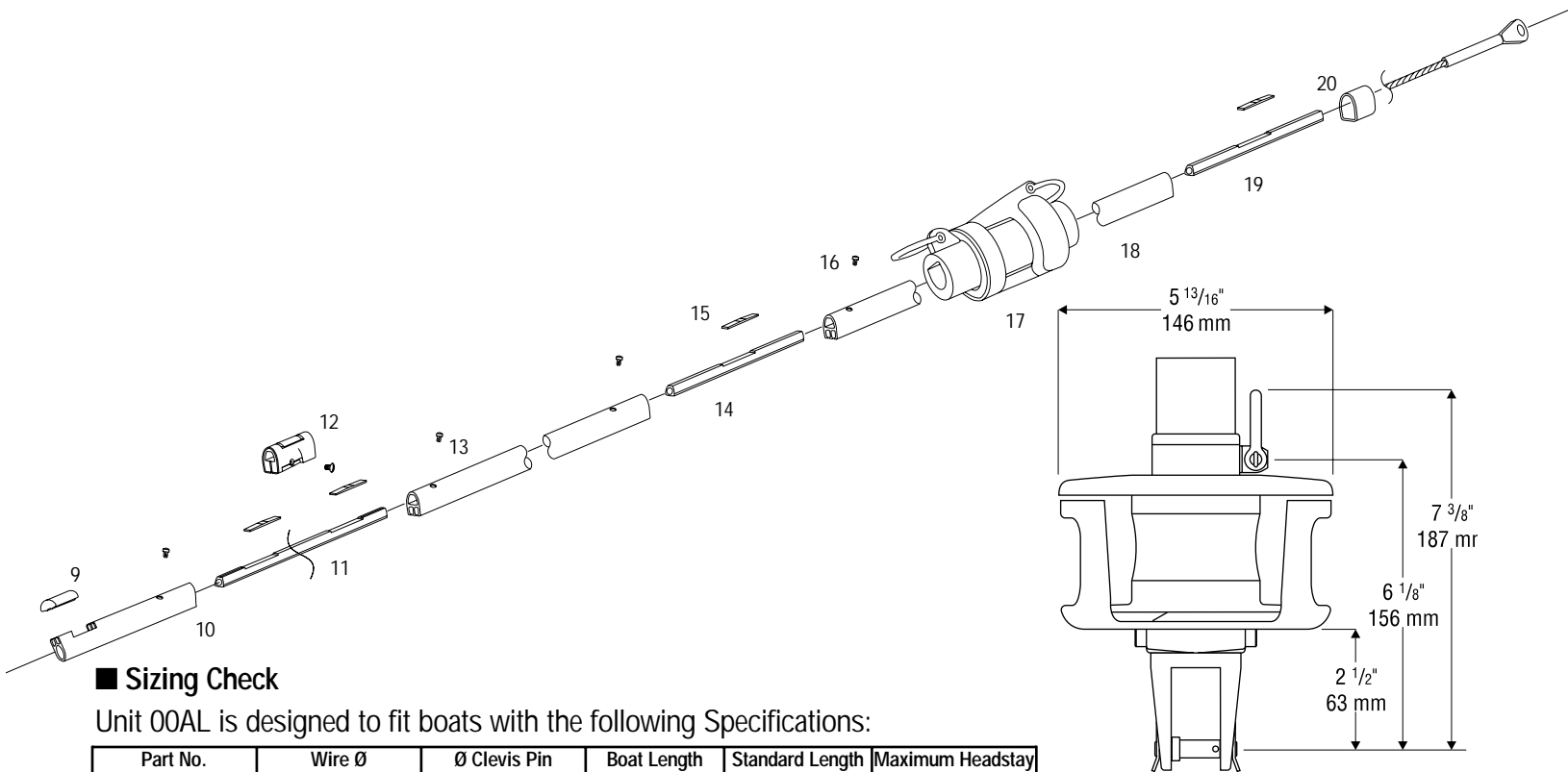
Profil inférieur standard  
Unterstes Profil  
Estruso inferiore

### 11 Bottom Foil Connector

Connecteur inférieur  
Unterstes Verbinder  
Connettore inferiore

### 12 Feeder

Engageur  
Einfädler  
Feeder



## ■ Sizing Check

Unit 00AL is designed to fit boats with the following Specifications:

Part No. Ref. Art Nr Num.	Wire Ø Ø Cable Stag Ø Ø Cavo	Ø Clevis Pin Ø de l'axe Bolzen Ø Ø Perno	Boat Length Schiff-länge Longueur du Bateau Lunghezza della Barca	Standard Length Longueur normale Länge normal Lunghezza normale	Maximum Headstay Longueur Maxi de l'étai max Länge Vorstag Maxima lunghezza strallo
1110	1/8", 3/32", 3/16" 3, 4, 5 mm	1/4", 5/16", 3/8", 7/16" 6.4, 8, 9.5, 11 mm	26' Max 7.93 m	31'6" 9.60 m	35' 10.67 m

## ■ Check Chainplate Clevis Pin

Check the chainplate on the boat to make sure the special pin ordered and shipped will fit correctly. Harken does not recommend drilling the chainplate or altering the furler to fit other pin sizes.

Check to make sure the bottom corner of the furler does not hit the deck plates of the chainplate when the furler is at the correct angle. If this is a problem, a toggle must be added below the furler and the headstay shortened accordingly. See page 8.

## ■ Check Bow Pulpit Clearance

Check to make sure the lower drum assembly will fit inside the bow pulpit. If there is an anchor locker, check to see if the drum assembly will clear. If necessary, use a toggle or link plates to raise the unit. See page 8.

## ■ Note

The 00AL unit rides over the headstay and turnbuckle (not supplied by Harken). It requires the connectors to be captured on the wire. With swage studs or rod stays,

### 13 Regular Foil Extrusion

Profil standard (2130 mm)  
Normales Profil  
Estruso Standard

### 14 Connector

Connecteur  
Verbinder  
Connettore

### 15 Connector Locking Wedges

Cales plastiques pour connecteurs  
Kunststoff Keile  
Piastrine di bloccaggio connettori

### 16 Connector Screws

Vis pour connecteurs  
Schrauben für Verbinder  
Viti di bloccaggio connettori

connectors must be slid on the stay before swaging or coldheading. This is most easily done when making up the headstay. If you elect to reuse the existing wire, it will be shortened the depth that the wire is recessed into the terminal and a toggle or link plate used to compensate. On retrofits, either the eye or the stud may be swaged or coldheaded. Harken does not supply terminals for this purpose. If a Norseman or Stay-Lok terminal is used, the installation can be completed at the boat without taking the wire to a rigger.

## ■ Wire Condition

Your system is designed to allow use of your existing headstay wire. Examine your headstay carefully to be sure that it is in good condition before you use it with the furler. Look for corrosion and cracks at swage fittings and for abrasion or damage to the wire itself.

Wire condition will vary depending upon climate and use but as a general rule, do not use wire which has been in saltwater for more than four seasons or any wire which is more than six years old.

### 17 Halyard Swivel

Émérillon de drisse  
Fallwirbel  
Girella superiore (Drizza)

### 18 Top Foil Extrusion

Profilis plastiques pour connecteurs  
Top Profil  
Estruso superiore

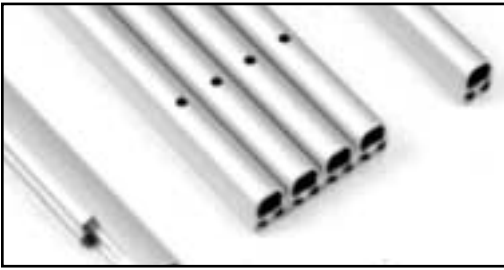
### 19 Connector

Connecteur  
Verbinder  
Connettore

### 20 Top Foil Trim Cap

Capuchon plastique supérieur  
Topkappe  
Cappuccio per estruso superiore

## Parts



You should have two boxes: a long box with foils and a rectangular box containing the drum and miscellaneous components. You may also have a third box containing the headstay.

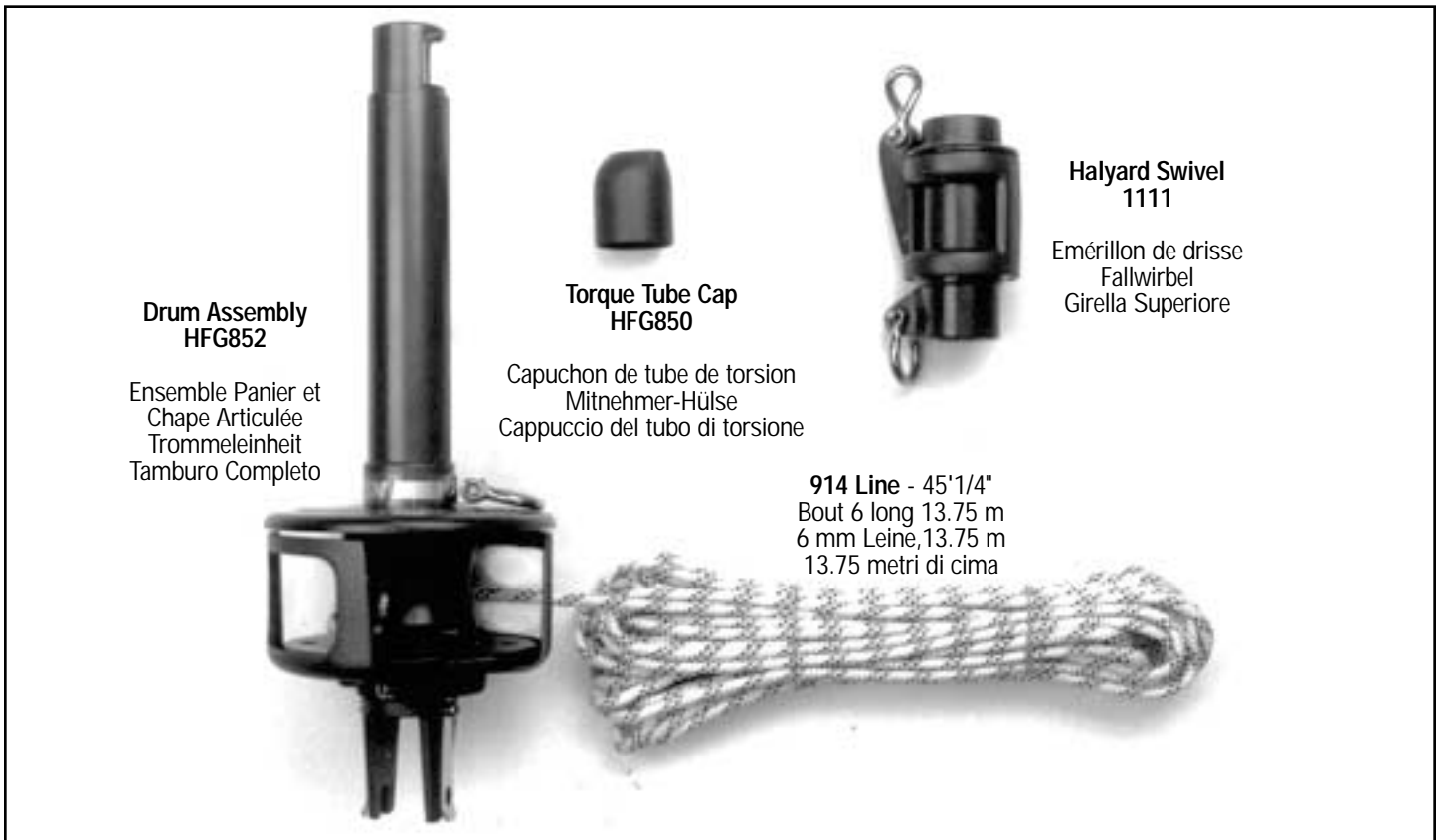
### ■ The foil box contains:

**4 7' (2.13 m) Foil Extrusions.** A standard kit has four foils, but one may have been pre-cut for use as your top foil. If your headstay is longer than 31'6" (9.60 m) you should order one extra foil extrusion, Part #906.

**1 24" (610 mm) Special Bottom Foil Extrusion.**

### ■ The main components box contains parts packaged on the display card plus a smaller parts box.

## Main Components



## Main Parts

Part	Description	HFG850 Torque Tube Cap	1111 Halyard Swivel
HFG852	Drum Assembly		
HCP1222	SS Spring Tangs (2)		2110 1/4" Head Shackle
HFS757	5 mm Socket Head Cap Screws (2)		2112 1/4" Halyard Shackle
HFG600	Spool Assembly		HSB15 24 - 1/4" Delrin Balls, Lower Race
2110	1/4" Tack Shackle		HSB17 24 - 1/4" Torlon Balls, Upper Race
HFG750	Line Guard Assembly		HCP1199 Large Retaining Snap Ring
<b>914</b>	<b>1/4" line 45' with HCP237 Hog Ring</b>		HCP191 Small Retaining Snap Ring

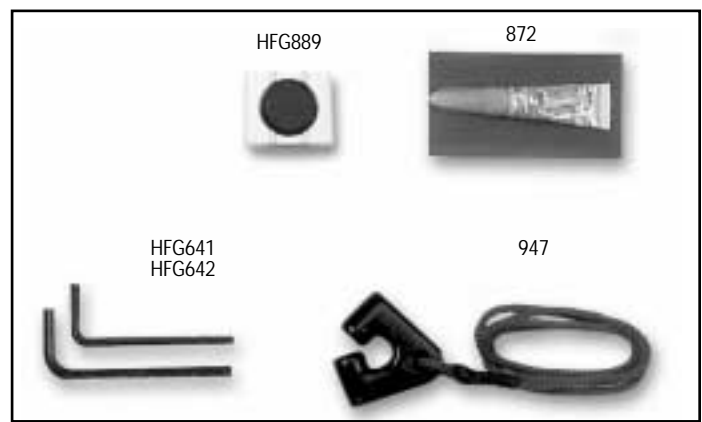


## Parts



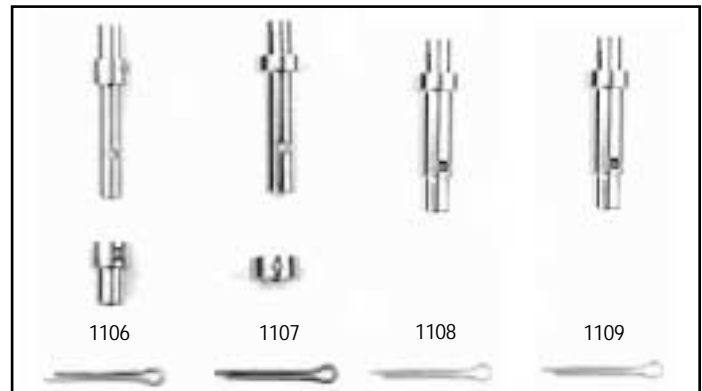
## Foil and Feeder Parts

Part	Description
933	Foil screws
946	Connector wedges
913	Feeder
910	Trim cap
833	Loctite® (blue)
929	Loctite® (red)
909	6" (152 mm) Connector (4 in standard package)
908	7.625" (194 mm) Long bottom connector
HF6858	2' (610 mm) Bottom foil
906	7' (2.13 m) Foil (4 in standard package)
1112	Optional 3.5' (1.067 m) top foil for lengths over 31'6" (9.601 m)



## Miscellaneous Parts

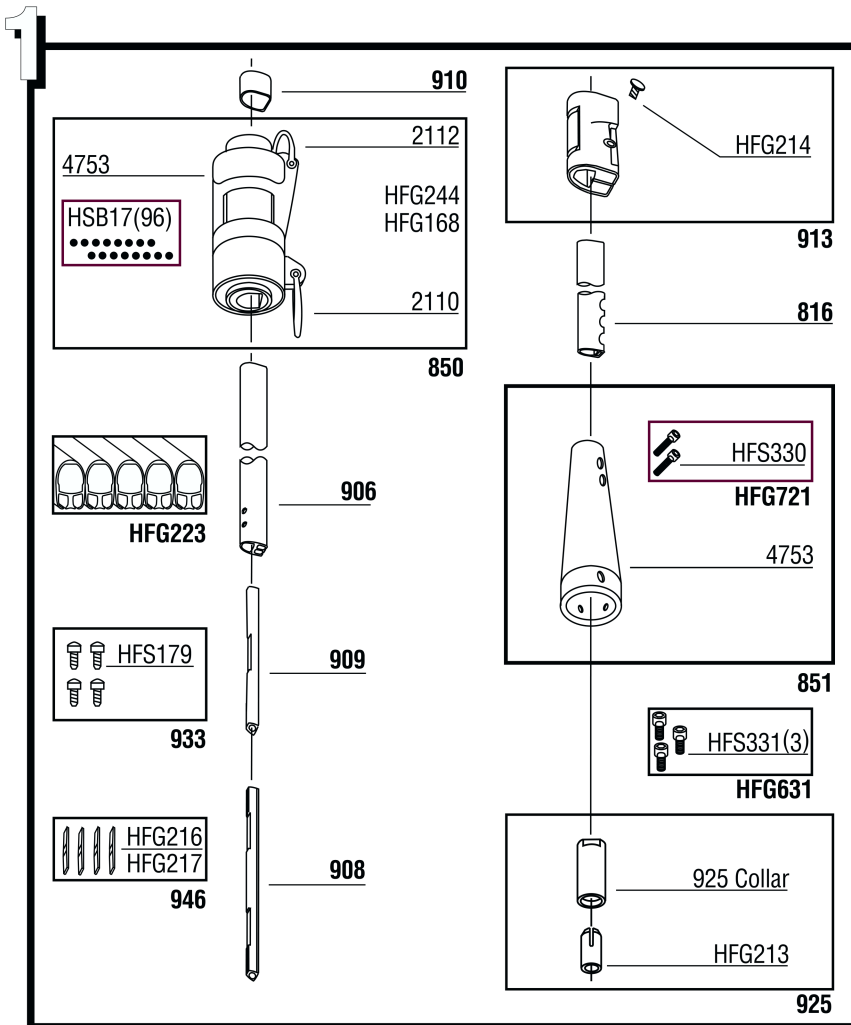
Part	Description
HFG641	4 mm Allen Wrench
HFG642	5 mm Allen Wrench
HFG889	Torque Tube Foil Key
947	Prefeeder
872	Super Glue®



## Clevis Pin Sets

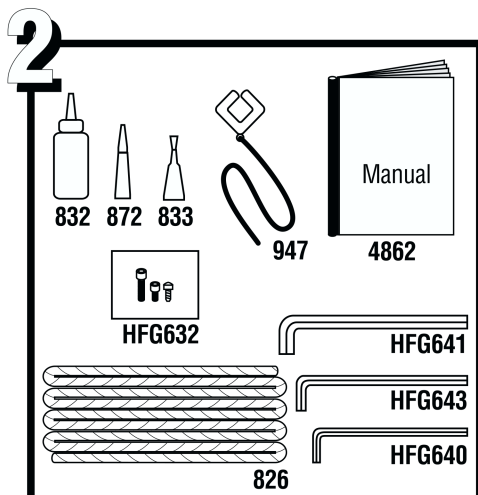
Clevis Pin		Components	
Part No.	Description	Part No.	Description
1106	1/4" Pin Set	HFG767	1/4" (6.35 mm) Pin
		HFG768	Spacer
		HFS113	Cotter Pin
1107	5/16" Pin Set	HFG753	5/16" (8 mm) Pin
		HFG758	Spacer
		HFS113	Cotter Pin
1108	3/8" Pin Set	HFG749	3/8" (9.5 mm) Pin
		HFS113	Cotter Pin
1109	7/16" Pin Set	HFG773	7/16" (11 mm) Pin
		HFS113	Cotter Pin

*Tip: Order an extra pin set from your dealer to have as a spare.*



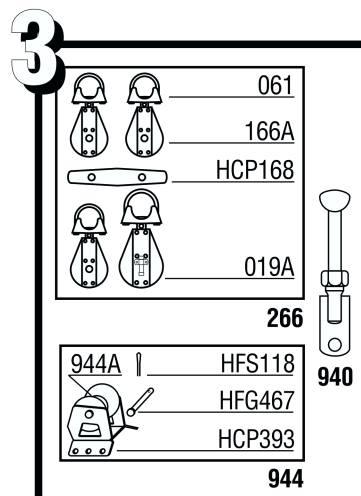
## 1 - Upper Assembly & Components

- 816 Extrusion - 2' Luff
- 850 Halyard Swivel
- 4456 Label - 3/8" x 2 1/8"
- 2110 Shackle - (6 mm) 1/4" Bow
- 2112 Shackle - (6 mm) 1/4" Twist
- HFG168 Snap Ring - Large
- HFG244 Snap Ring - Small
- HSB17 Ball Bearing - 1/4" Torlon (order 96)
- 851 Torque Tube
- 4753 Label - Small Red Oval
- HFG721 Set Torque Tube Clamp Screws (2)
- HFS330 Fastener - M6x1.0x30 316 Sk Cap
- 906 Extrusion - 7' Luff
- 908 Connector - 7.625" Bottom
- 909 Connector - 6"
- 910 Trim Cap
- 913 Feeder
- HFG214 Fastener - 10-32 x 3/8" 18-8 Slit Ov
- 925 Locking Collar - w/Insert
- 925 Collar Collar
- HFG213 Plastic Insert
- 933 Connector Screw Set (14)
- HFS179 Fastener - 8/32" x .156" Slit Fl #6
- 946 Wedge Set (7 long, 2 short)
- HFG216 Connector Wedge
- HFG217 Short Connector Wedge
- HFG223 Extrusion Set (5 long, 1 short)
- 816 Extrusion - 2' Luff
- 906 Extrusion - 7' Luff
- HFG631 Fastener Set (3)
- HFS331 Fastener - M5 x 8 x 8mm A4 Sk Cap



## 2 - Accessories

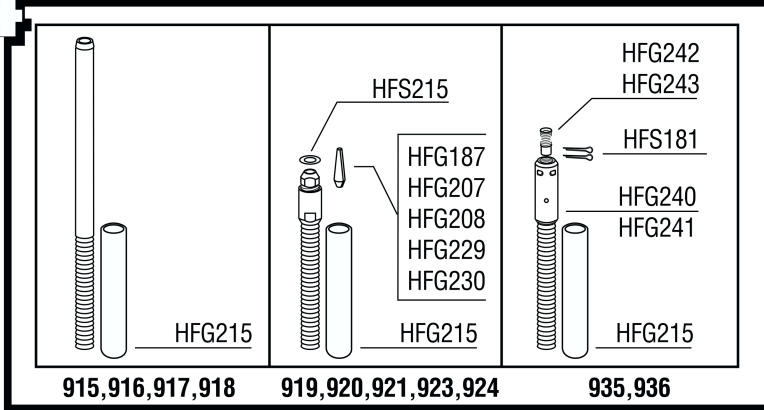
- 4112 Manual - Furling
- 826 Line - 1/4" x 55'
- HCP237 Hog Ring - 1/4"
- 833 Loctite - Blue
- 872 Super Glue
- 832 Loctite - 0 Red
- 947 Prefeeder - Phenolic w/Line
- HFG632 Fastener Set - Spare
- HFG641 Wrench - M4 Allen Long
- HFG642 Wrench - M5 Allen Short



## 3 - Optional Parts

- 266 Kit - Small Lead Block
- 019A Block - 2.25" Hex Stbd
- 061 Stanchion Mount Base
- 166A Block - Bullet Swivel
- HCP168 Cleat - 4" Black
- 940 Isomat Adapter - Specify Clevis Size
- 944 Halyard Restrainer - Small
- 944A Sheave & SS Inner Race Only
- HCP393 Bracket - Small Halyard Restrainer
- HFG467 Clevis Pin - 1/4" x 1.0625" 18-8
- HFS118 Cotter Pin - 1/16" x .500" 18-8

## 4



### 4 - Studs & Components

#### Swage Studs

- HFG215 Stud-Cap - 7/16" ID x 3" Red
- 915 Stud - 5/32" (4 mm) Swage
- 916 Stud - 3/16" (5 mm) Swage
- 917 Stud - 7/32" (7 mm) Swage
- 918 Stud - 6 mm Swage (type 316 only)

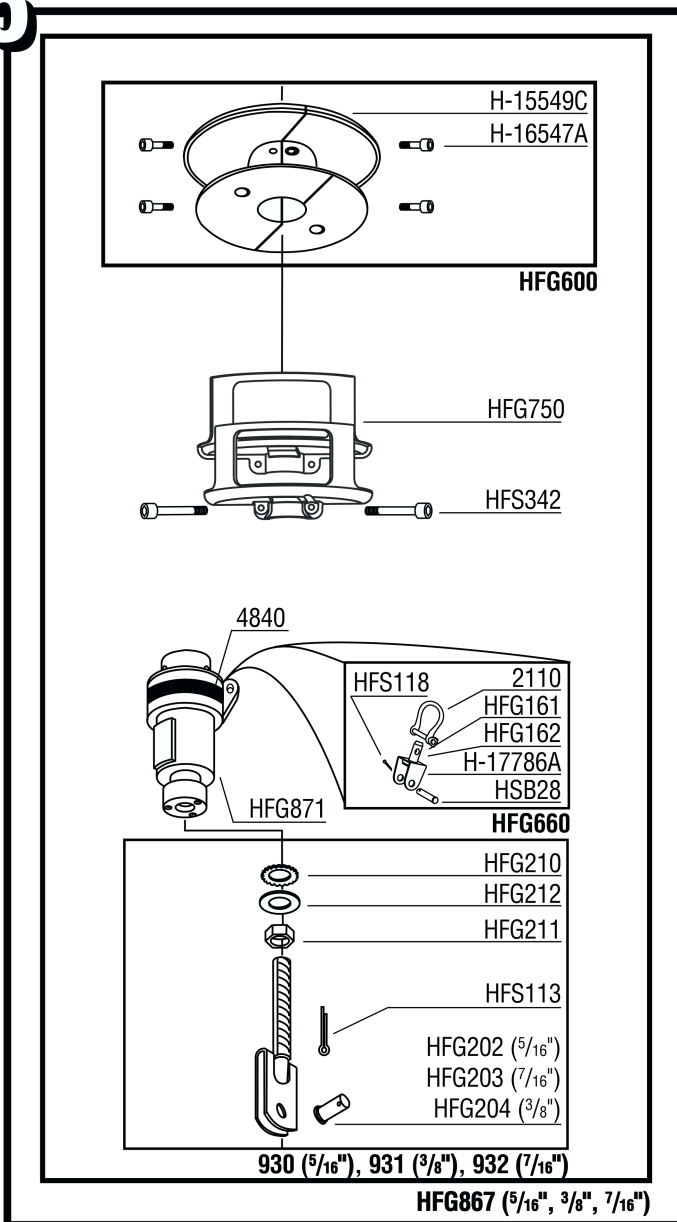
#### Sta-Lok Studs

- HFG215 Stud-Cap - 7/16" ID x 3" Red
- 919 Stud - 5/32" Sta-Lok
- HFG207 Wedge - 5/32" (4 mm) Sta-Lok
- HFS215 Washer - 3/8" .068 x .813 x .406 18-8
- 920 Stud - 3/16" Sta-Lok
- HFG229 Wedge - 3/16" Sta-Lok
- HFS215 Washer - 3/8" .068 x .813 x .406 18-8
- 921 Stud 7/32" Sta-Lok
- HFG230 Wedge - 7/32" Sta-Lok
- HFS215 Washer - 3/8" .068 x .813 x .406 18-8
- 923 Stud - 5 mm Sta-Lok Unit 0
- HFG208 Wedge - 5mm Sta-Lok
- HFS215 Washer - 3/8" .068 x .813 x .406 18-8
- 924 Stud - 6 mm Sta-Lok
- HFG187 Wedge - 6 mm Sta-Lok
- HFS215 Washer - 3/8" .068 x .813 x .406 18-8

#### Rod

- HFG215 Stud-Cap - 7/16" ID x 3" Red
- 935 Stud -4 Rod Adpt w/Nosepiece
- HFG240 Stud - Main Body
- HFG242 Nosepiece -4
- HFS181 Cotter Pin - 3/32" x 1" 18-8
- 936 Stud -6 Rod Adpt w/Nosepiece
- HFG241 Stud - Main Body
- HFG243 Nosepiece -6
- HFS181 Cotter Pin - 3/32" x 1" 18-8

## 5

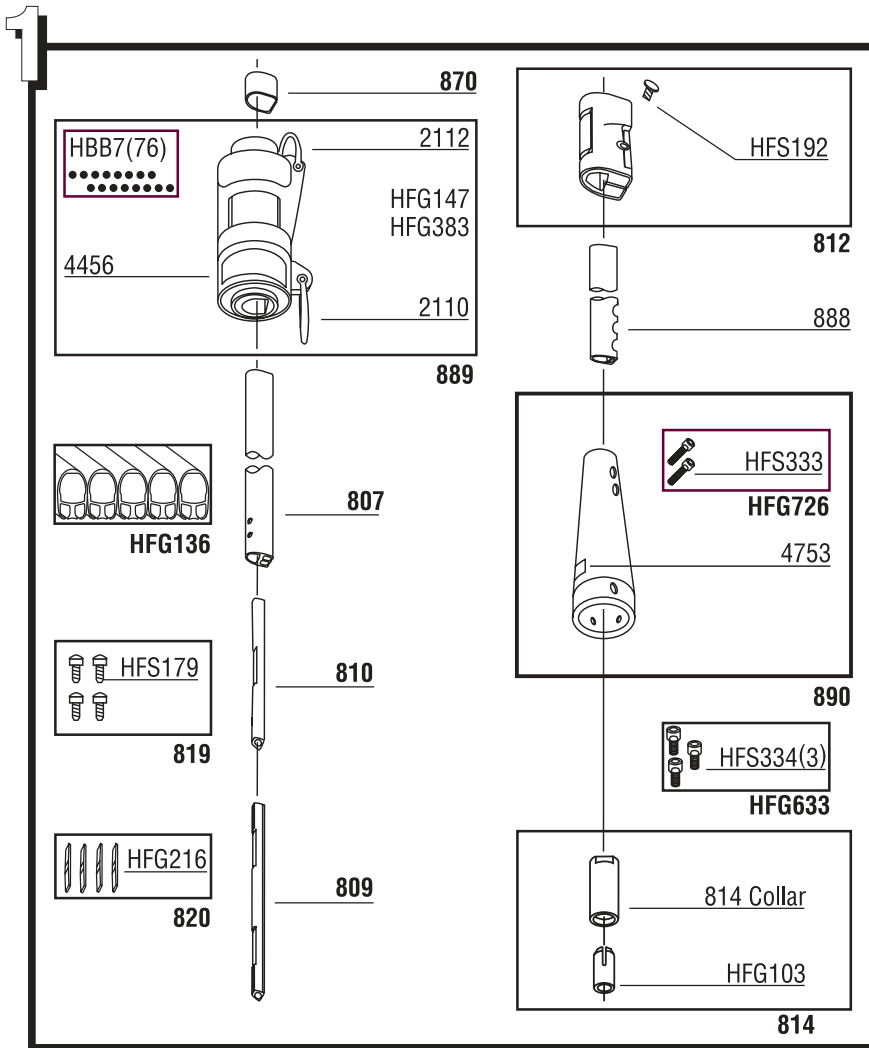


### 5 - Drum Assembly & Components

- HFG867<sup>5/16</sup>** Drum Assembly 5/16" Clevis - Complete
- HFG867<sup>3/8</sup>** Drum Assembly 3/8" Clevis - Complete
- HFG867<sup>7/16</sup>** Drum Assembly 7/16" Clevis - Complete
- HFG600 Spool Assembly - Complete
- H-15549C Spool Assembly Half
- H-16547A Fastener - M6 x 1.00-6G 316 (order 4)
- HFG750 Line Guard (order 2)
- HFS342 Fastener - M6 x 1.00 GC Screw (order 2)
- HFG871 Hub - w/o Lower Toggle
- 4840 Label - Tack Swivel
- HFG660 Tack Shackle Assembly
- 2110 Shackle - (6 mm) 1/4" Bow
- H-17786A Swivel Bracket
- HFG161 Swivel Pin - 13/32"
- HFG162 Plastic Washer
- HFS118 Pin - 1/16" x .500 18-8 Cotter
- HSB28 Clevis Pin - 1/4" x .875"
- 930, 931, 932 Lower Toggle
- HFG202 Clevis Pin 5/16" - Lower Toggle
- HFG203 Clevis Pin 7/16" - Lower Toggle
- HFG204 Clevis Pin 3/8" - Lower Toggle
- HFG210 Lockwasher - Toggle
- HFG211 Lock Nut
- HFG212 Flat Washer - Lower Toggle
- HFS113 Cotter Pin

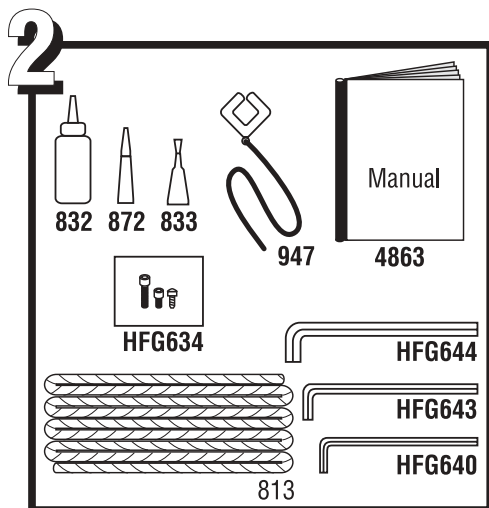
# Parts List - MKIII Unit 1

# HARKEN®



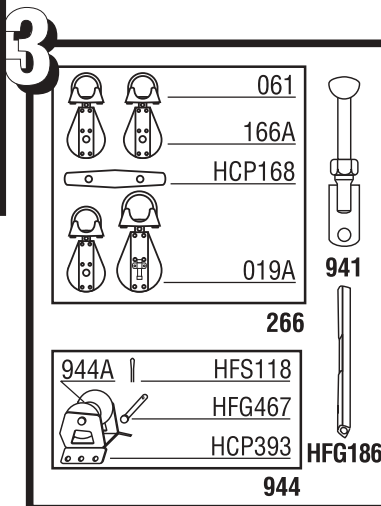
## 1 - Upper Assembly & Components

- 807 Extrusion - 7' Luff
- 809 Connector - 8.890" Bottom
- 810 Connector - 7"
- HFG186 Split Top Connector (Not Shown, Optional) Feeder
- 812 Fastener - 10-32 x 3/8" 18-8 Stl Ov
- 814 Locking Collar - w/Insert
- 814 Collar Locking Collar
- HFG103 Plastic Insert
- 819 Connector Screw Set (30)
- HFS179 Fastener - 3/32" x .156" Stl Fi #6
- 820 Wedge Set (17)
- HFG216 Connector Wedge
- 870 Trim Cap
- 888 Extrusion - 2' Luff
- 889 Halyard Swivel
- 4456 Label - 3/8" x 2 1/8"
- 2112 Shackle - (6 mm) 1/4" Twist
- 2110 Shackle - (6 mm) 1/4" Bow
- HBB7 Ball Bearing - 3/8" Torlon (order 76)
- HFG147 Snap Ring - Small
- HFG383 Snap Ring - Large
- 890 Torque Tube
- 4753 Label - Small Red Oval
- HFG726 Set Torque Tube Clamp Screws (2)
- HFS333 Fastener - M6 x 1.0 x 30 316 Sk Cap
- HFG633 Fastener - M5 x .8 x 10mm A4 Sk Cap
- HFG136 Extrusion Set (6 Long, 1 Short)
- 807 Extrusion - 7' Luff
- 888 Extrusion - 2' Luff
- HFG633 Fastener Set - MKIII Torque Tube (3)
- HFS334 Fastener - M5 x .8 x 10mm A4 Sk Cap



## 2 - Accessories

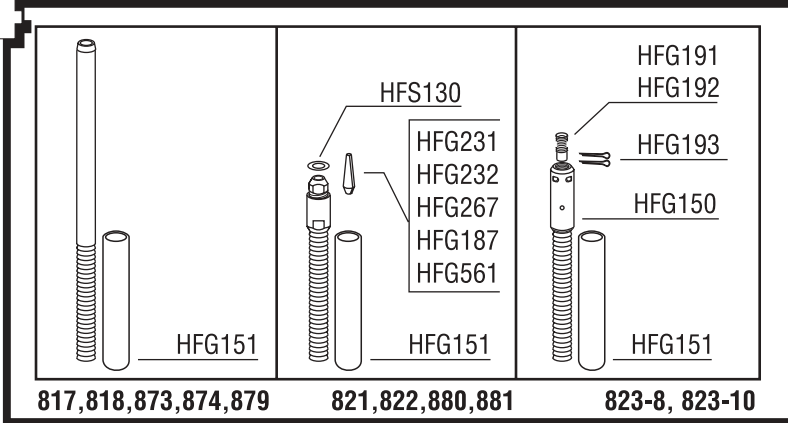
- 4113 Manual - Furling
- 813 Line - 5/16" x 70'
- 832 Loctite - 1 Red
- 833 Loctite - Blue
- 872 Super Glue
- 947 Prefeeder - Phenolic w/Line
- HFG634 Fastener Set - Spare
- HFG640 Wrench - M4 Allen Short
- HFG643 Wrench - M5 Allen Long
- HFG644 Wrench - M6 Allen Short



## 3 - Optional Parts

- 266 Kit - Small Lead Block
- 019A Block - 2.25" Hex Stbd
- 061 Stanchion Mount Base
- 166A Block - Bullet Swivel
- HCP168 Cleat - 4" Black
- 941 Isomat Adapter
- 944 Halyard Restrainer - Small
- 944A Sheave & SS Inner Race Only
- HCP393 Bracket - Small Halyard Restrainer
- HFG467 Clevis Pin - 1/4" x 1.0625" 18-8
- HFS118 Cotter Pin - 1/16" x .500" 18-8
- HFG186 Split Top Connector

## 4



## 4 - Studs & Components

### Swage Studs

- HFG151 Stud-Cap - 1/2" ID x 4" Red
- 817 Stud - 1/4" Swage
- 818 Stud - 9/32" Swage
- 873 Stud - 6 mm Swage
- 874 Stud - 7 mm Swage
- 879 Stud - 8 mm Swage Unit 1

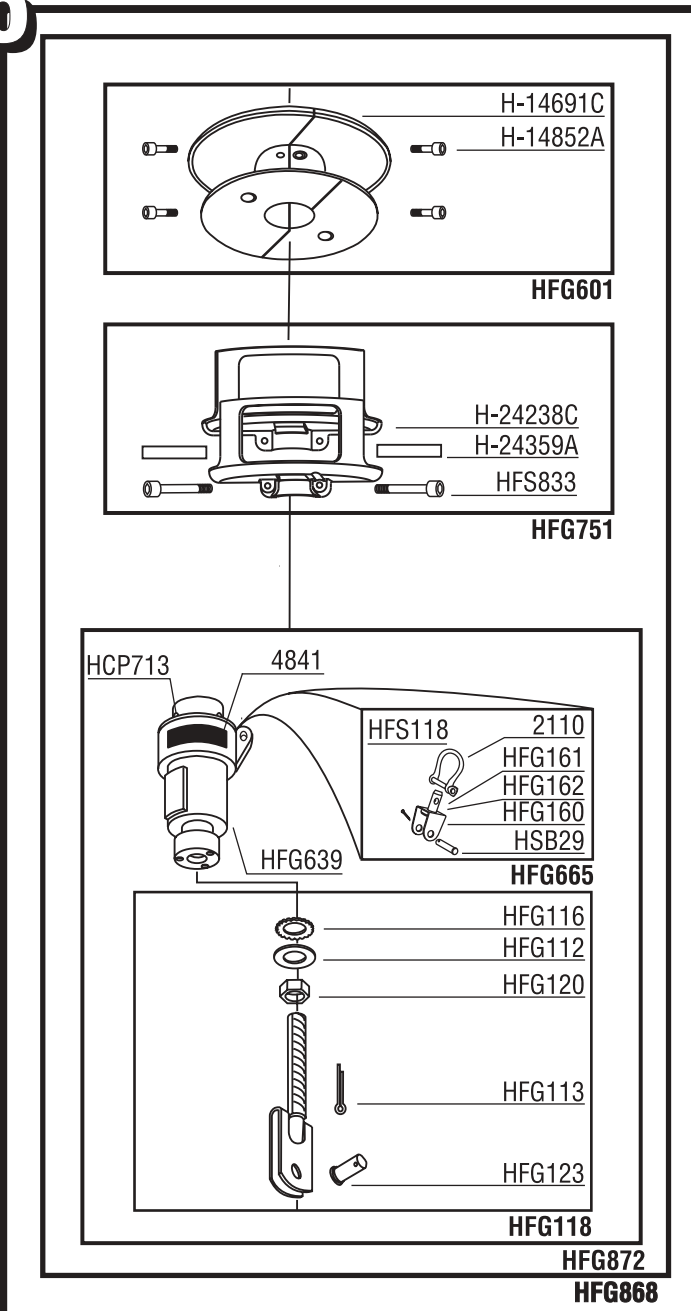
### Sta-Lok Studs

- HFG151 Stud-Cap - 1/2" ID x 4" Red
- 821 Stud - 1/4" Sta-Lok
- HFG231 Wedge - 1/4" Sta-Lok
- HFS130 Washer - 3/8" .068 x .813 x .406 18-8
- 822 Stud - 9/32" (7 mm) Sta-Lok
- HFG232 Wedge - 9/32" (7 mm) Sta-Lok
- HFS130 Washer - 3/8" .068 x .813 x .406 18-8
- 880 Stud - 6 mm Sta-Lok
- HFG187 Wedge - 6 mm Sta-Lok
- HFS130 Washer - 3/8" .068 x .813 x .406 18-8
- 881 Stud - 8 mm Sta-Lok Unit 1
- HFG561 Wedge 5/16" (8 mm) Sta-Lok
- HFS130 Washer - 3/8" .068 x .813 x .406 18-8

### Rod Adapter Studs

- HFG151 Stud-Cap - 1/2" ID x 4" Red
- 823 -8 Stud -8 Rod Adpt w/Nosepiece
- HFG150 Stud - Main Body
- HFG191 Nosepiece -8
- HFS193 Cotter Pin - 3/32" x 1" 18-8
- 823 -10 Stud -10 Rod Adpt w/Nosepiece
- HFG150 Stud - Main Body
- HFG192 Nosepiece -10
- HFG193 Cotter Pin - 3/32" x 1" 18-8

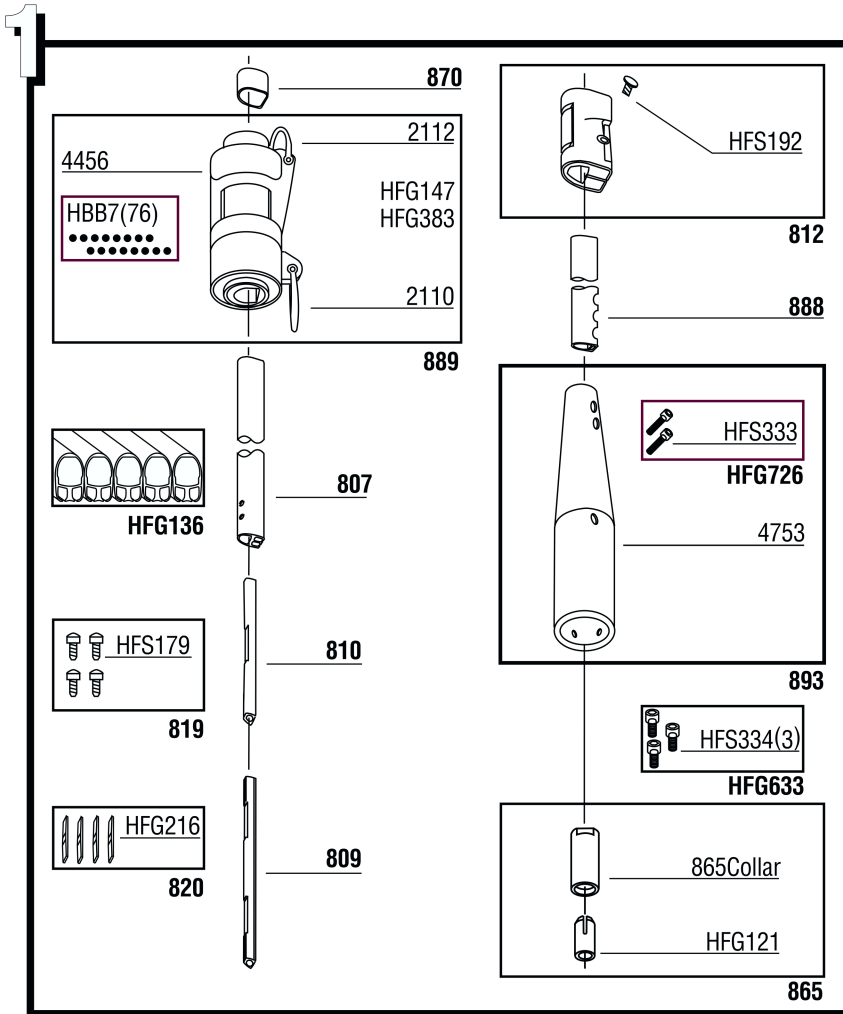
## 5



## 5 - Drum Assembly & Components

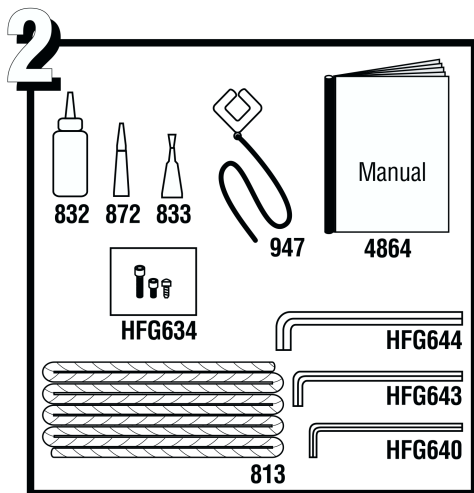
### HFG868

- Drum Assembly - Complete
- HFG601 Spool Assembly - Complete
- H-14691C Spool Assembly Half
- H-14852A Fastener - M6 x 1.00-6G 316 (order 4)
- HFG751 Guard Assembly
- H-24238C Line Guard (order 2)
- H-24359A Mylar Guard Clamp Shim (order 2)
- HFS833 Fastener - M8 x 1.25 GC SCREW (order 2)
- HFG872 Hub - w/Lower Toggle
- HFG118 Lower Toggle
- HFG112 Flat Washer - Lower Toggle
- HFG113 Cotter Pin
- HFG116 Lockwasher - Toggle
- HFG120 Lock Nut
- HFG123 Clevis Pin - Lower Toggle
- HFG639 Hub - w/o Lower Toggle
- 4841 Label - Tack Swivel
- HCP713 SS Helicoil - M5 x 0.8 x 5
- HFG665 Tack Shackle Assembly
- 2110 Shackle - (6 mm) 1/4" Bow
- HFG160 Swivel Bracket
- HFG161 Swivel Pin - 13/32"
- HFG162 Plastic Washer
- HFS118 Pin - 1/16" x .500 18-8 Cotter
- HSB29 Clevis Pin - 1/4" x 1.000"



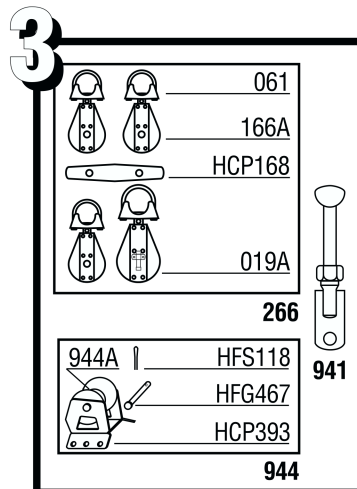
## 1 - Upper Assembly & Components

- 807 Extrusion - 7' Luff
- 809 Connector - 8.890" Bottom
- 810 Connector - 7"
- 812 Feeder
- HFS192 Fastener - 10-32 x 3/8" 18-8 Stl Ov
- 865 Locking Collar - w/Insert
- 865Collar Locking Collar
- HFG121 Plastic Insert
- 819 Connector Screw Set (30)
- HFS179 Fastener - 1/2" x .156" Stl Fi #6
- 820 Wedge Set (17)
- HFG216 Connector Wedge
- 870 Trim Cap 1
- 888 Extrusion - 2' Luff
- 889 Halyard Swivel
- 4456 Label - 3/8" x 2 1/8"
- 2112 Shackle - (6 mm) 1/4" Twist
- 2110 Shackle - (6 mm) 1/4" Bow
- HBB7 Ball Bearing - 3/8" Torlon (order 76)
- HFG147 Snap Ring - Small
- HFG383 Snap Ring - Large (order 2)
- 893 Torque Tube
- 4753 Label - Small Red Oval
- HFG726 Set Torque Tube Clamp Screws (2)
- HFS334 Fastener - M6 x 1.0 x 30 316 Sk Cap
- HFG136 Extrusion Set (6 Long, 1 Short)
- 807 Extrusion - 7' Luff
- 888 Extrusion - 2' Luff
- HFG633 Fastener Set - Torque Tube (3)
- HFS334 Fastener - M5 x .8 x 10mm A4 Sk Cap



## 2 - Accessories

- 4114 Manual - Furling
- 813 Line - 5/16" x 70'
- 832 Loctite - 1 Red
- 833 Loctite - Blue
- 872 Super Glue
- 947 Prefeeder - Phenolic w/Line
- HFG634 Fastener Set - Spare
- HFG640 Wrench - M4 Allen Short
- HFG643 Wrench - M5 Allen Long
- HFG644 Wrench - M6 Allen Short

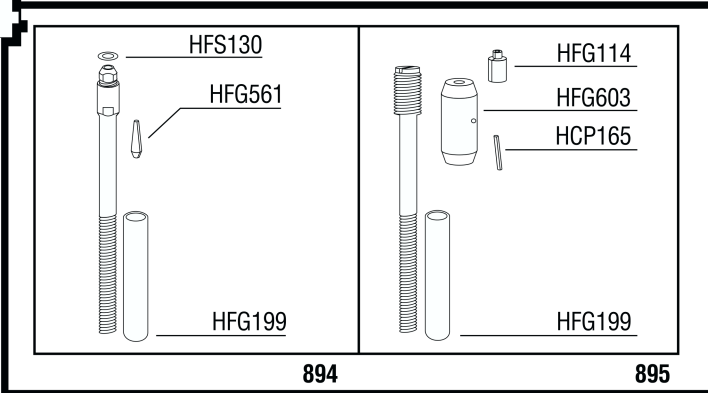


## 3 - Optional Parts

- 266 Kit - Small Lead Block
- 019A Block - 2.25" Hex Stbd
- 061 Stanchion Mount Base
- 166A Block - Bullet Swivel
- HCP168 Cleat - 4" Black
- 942 Isomat Adapter
- 944 Halyard Restrainer - Small
- 944A Sheave & SS Inner Race Only
- HCP393 Bracket - Small Halyard Restrainer
- HFG467 Clevis Pin - 1/4" x 1.0625" 18-8
- HFS118 Cotter Pin - 1/16" x .500" 18-8



## 4



### 4 - Studs & Components

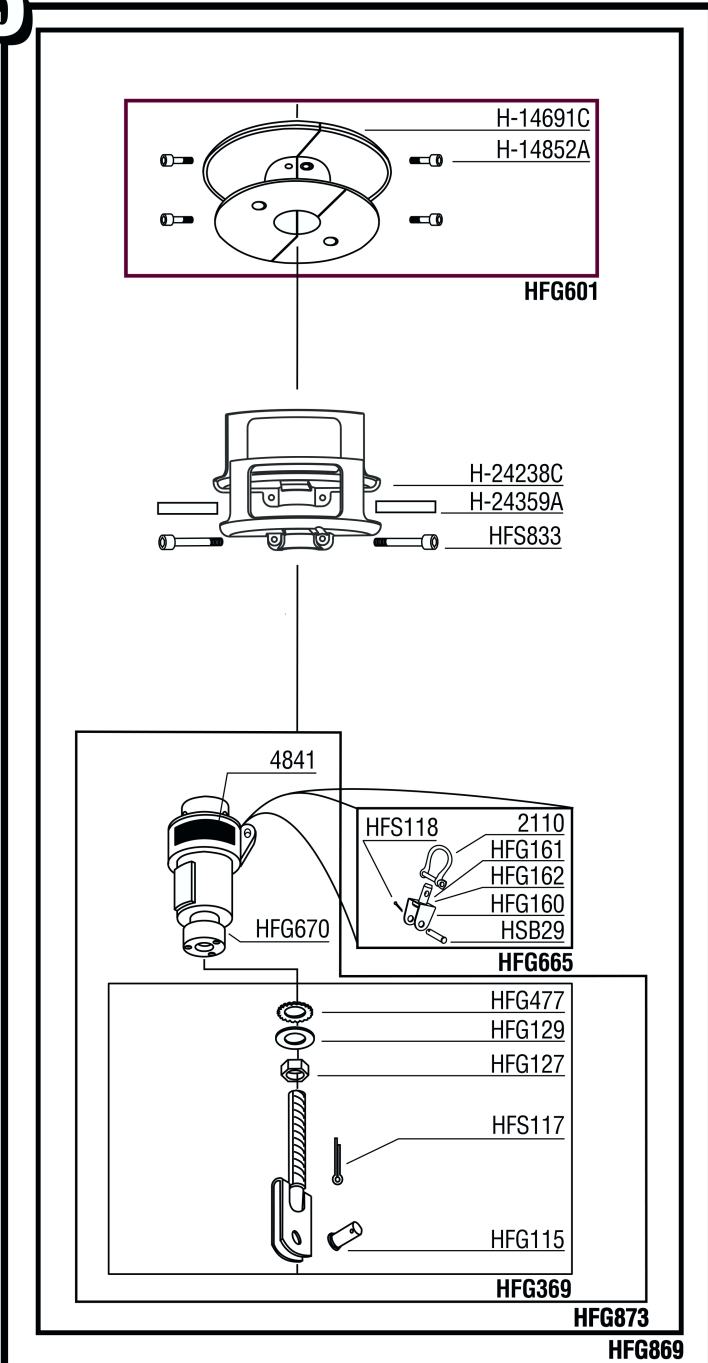
#### Sta-Lok Studs

- HFG199 Stud-Cap - 1/2" ID x 4" Red
- 894 Stud - 5/16" (8 mm) Sta-Lok
- HFG561 Wedge - 5/16" Sta-Lok
- HFS130 Washer - 3/8" .068 x .813 x .406 18-8

#### Rod

- HFG199 Stud-Cap - 1/2" ID x 4" Red
- 895 Stud -12 Rod Adpt w/Nosepiece
- HFG603 Stud - Main Body
- HFG114 Nosepiece -12
- HCP165 Roll Pin - 5/32" x 1.25"
- H-8396A Sleeve

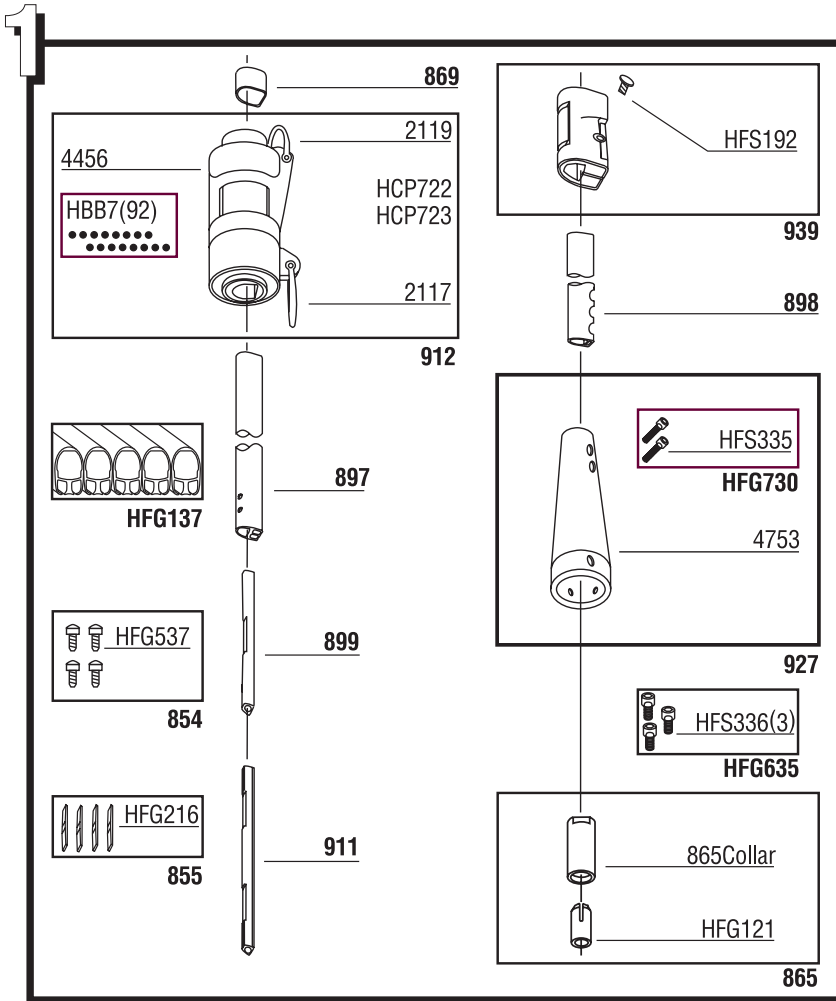
## 5



### 5 - Drum Assembly & Components

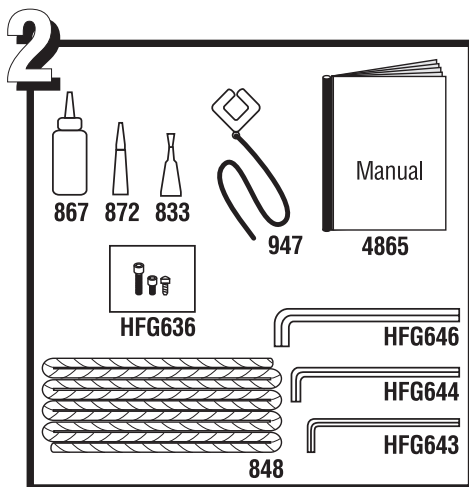
#### HFG869

- HFG601 Drum Assembly - Complete
- HFG601 Spool Assembly - Complete
- H-14691C Spool Assembly Half
- H-14852A Fastener - M6 x 1.00-6G 316 (order 4)
- H-24238C Line Guard (order 2)
- HFS833 Fastener - M8 x 1.25 GC Screw (order 2)
- H-24359A Mylar Guard Clamp Shim (order 2)
- HFG873 Hub - w/Lower Toggle
- HFG369 Lower Toggle
- HFG129 Flat Washer - Lower Toggle
- HFS117 Cotter Pin
- HFG477 Lockwasher - Toggle
- HFG127 Lock Nut
- HFG115 Clevis Pin - Lower Toggle
- HFG670 Hub - w/o Lower Toggle
- 4841 Label - Tack Swivel
- HFG665 Tack Shackle Assembly
- 2110 Shackle - (6 mm) 1/4" Bow
- HFG160 Swivel Bracket
- HFG161 Swivel Pin - 13/32"
- HFG162 Plastic Washer
- HFS118 Pin - 1/16" x .500 18-8 Cotter
- HSB29 Clevis Pin - 1/4" x 1.000"



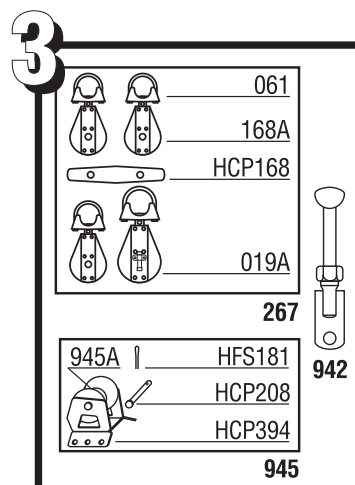
## 1 - Upper Assembly & Components

- 854 Connector Screw Set (38)
- HFG537 Fastener - 10-32 x 1/4" 18-8 Slit Ov
- 855 Wedge Set (22)
- HFG216 Connector Wedge
- 865 Locking Collar - w/Insert
- 865Collar Collar
- HFG121 Plastic Insert
- 869 Trim Cap
- 897 Extrusion - 7' Luff
- 898 Extrusion - 2' Luff
- 899 Connector - 9"
- 911 Connector - 11.355" Bottom
- 912 Halyard Swivel
- 4456 Label - 3/8" x 2 1/8"
- 2119 Shackle - (8 mm) 5/16" Twist
- 2117 Shackle - (8 mm) 5/16" Bow
- HCP723 Snap Ring - Large (order 2)
- HCP722 Snap Ring - Small
- HBB7 Ball Bearing - 3/8" Torlon (order 92)
- 927 Torque Tube
- 4753 Label - Small Red Oval
- HFG730 Set Torque Tube Clamp Screws (2)
- HFS335 Fastener - M8x1.25x35 316 Sk Cap
- 939 Feeder
- HFS192 Fastener - 10-32 x 3/8" 18-8 Slit Ov (order 2)
- HFG137 Extrusion Set (8 Long, 1 Short)
- 897 Extrusion - 7' Luff
- 898 Extrusion - 2' Luff
- HFG635 Fastener Set - Torque Tube (3)
- HFS336 Fastener - M8x1.25x16 A4 Sk Cap



## 2 - Accessories

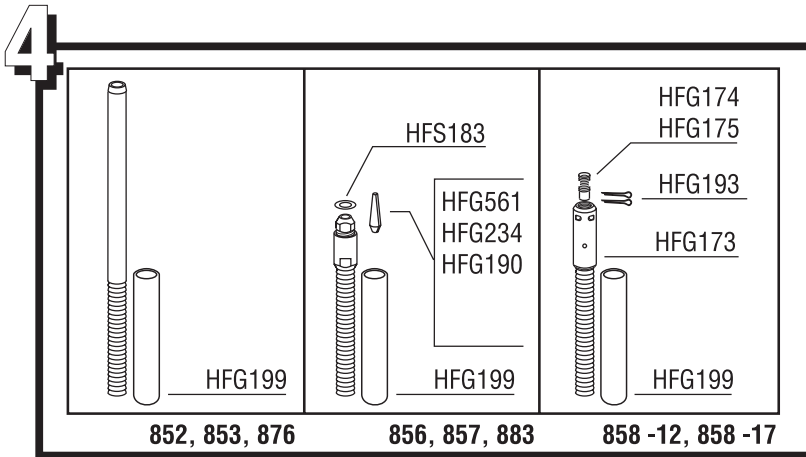
- 4115 Manual - Furling
- 833 Loctite - Blue
- 848 Line - 3/8" x 100'
- 867 Loctite - 2 Red
- 872 Super Glue
- 947 Prefeeder - Phenolic w/Line
- HFG636 Fastener Set - Spare
- HFG643 Wrench - M5 Allen Short
- HFG644 Wrench - M6 Allen Short
- HFG646 Wrench - M8 Allen Long



## 3 - Optional Parts

- 267 Kit - Lead Block
- 019A Block - 2.25" Hex Stbd
- 061 Stanchion Mount Base
- 168A Block - Bullet Swivel
- HCP168 Cleat - 4" Black
- 942 Isomat Adapter
- 945 Halyard Restrainer
- 945A Sheave & SS Inner Race Only
- HCP208 Clevis Pin - 5/16" x 1.250" 18-8
- HCP394 Bracket - Halyard Restrainer
- HFS181 Cotter Pin - 3/32" x .750" 18-8





## 4 - Studs & Components

### Swage Studs

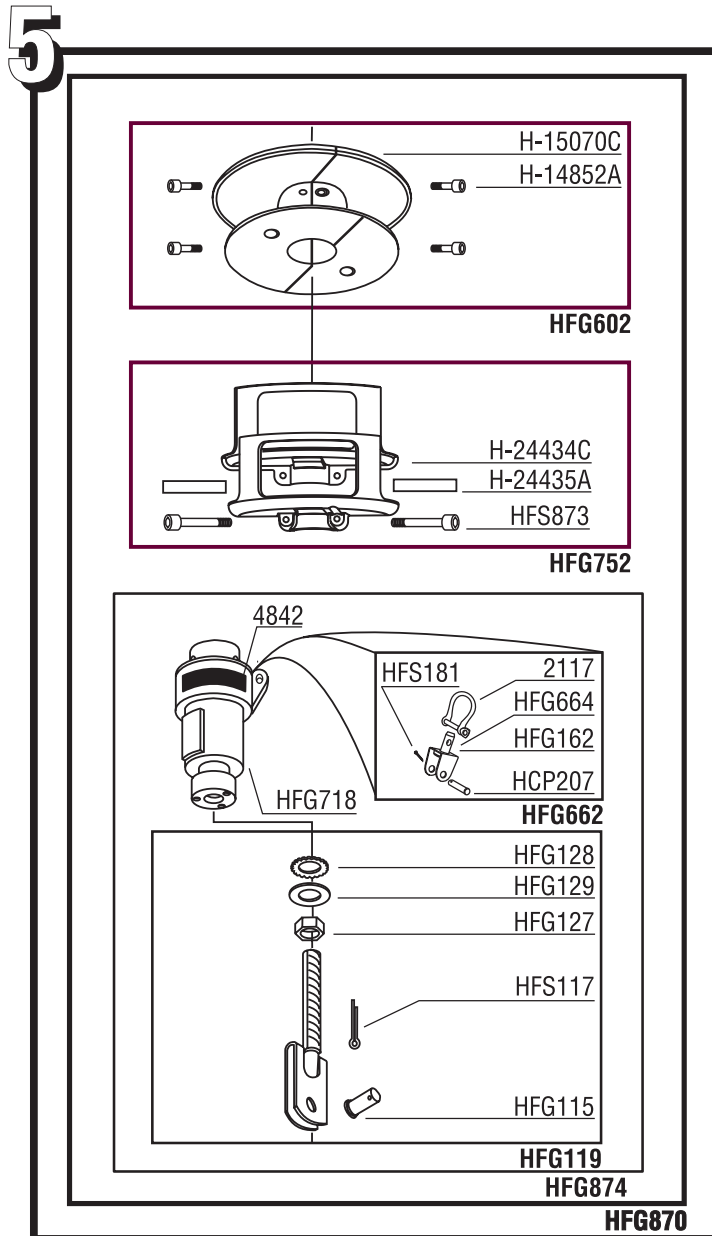
- HFG199 Stud-Cap - 5/8" ID x 4" Red
- 852 Stud - 5/16" (8 mm) Swage
- 853 Stud - 3/8" (5 mm) Swage
- 876 Stud - 10 mm Swage

### Sta-Lok Studs

- HFG199 Stud-Cap - 5/8" ID x 4" Red
- 856 Stud - 5/16" (8 mm) Sta-Lok
- HFG561 Wedge - 5/16" (8 mm) Sta-Lok
- HFS183 Washer - 3/8" .068 x .813 x .406 18-8
- 857 Stud - 3/8" Sta-Lok
- HFG234 Wedge - 3/8" Sta-Lok
- HFS183 Washer - 3/8" .068 x .813 x .406 18-8
- 883 Stud 10 mm Sta-Lok
- HFG190 Wedge - 10 mm Sta-Lok
- HFS183 Washer - 3/8" .068 x .813 x .406 18-8

### Rod

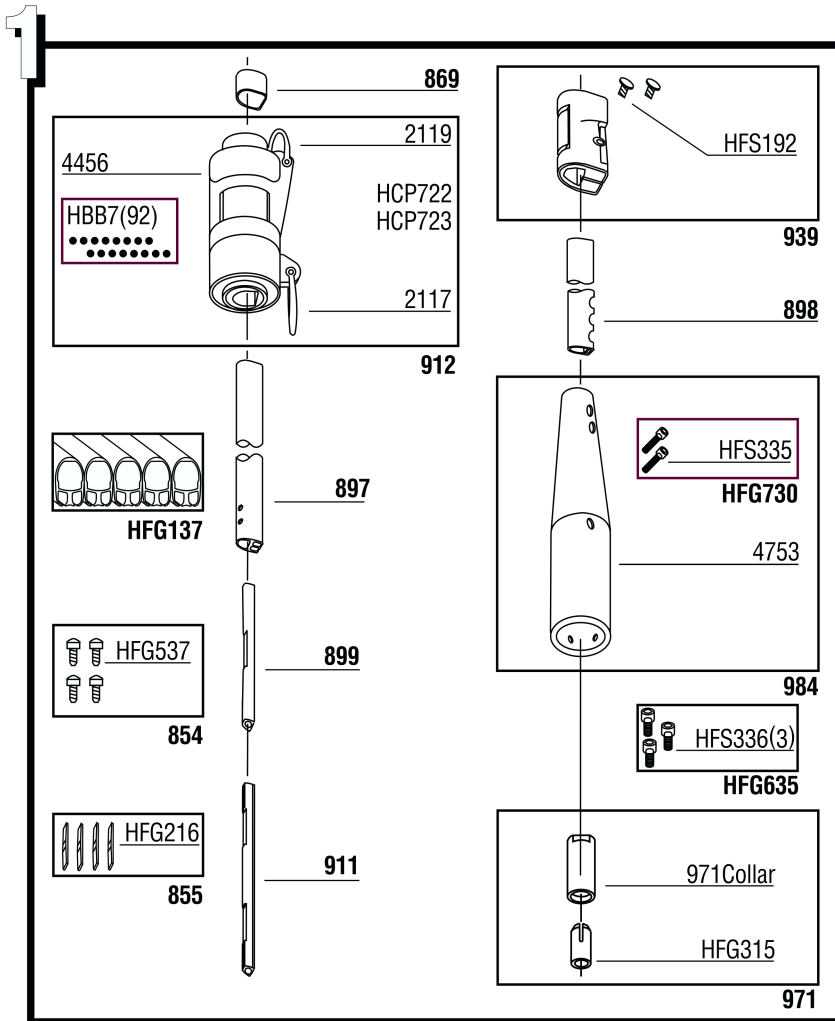
- HFG199 Stud-Cap - 5/8" ID x 4" Red
- 858 -12 Stud -12 Rod Adpt w/Nosepiece
- HFG173 Stud - Main Body
- HFG174 Nosepiece -12
- HFG193 Cotter Pin - 3/32" x 1" 18-8
- 858 -17 Stud -17 Rod Adpt w/Nosepiece
- HFG173 Stud - Main Body
- HFG175 Nosepiece -17
- HFG193 Cotter Pin - 3/32" x 1" 18-8



## 5 - Drum Assembly & Components

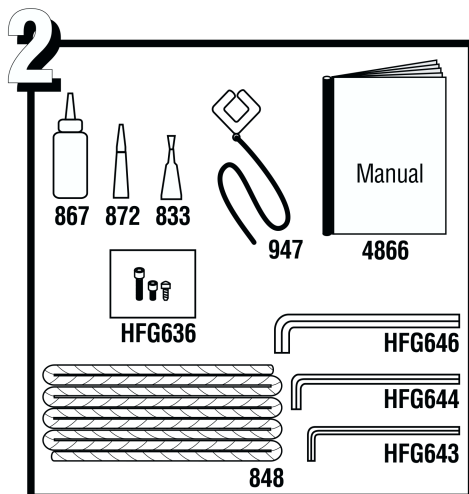
### HFG870

- HFG870 Drum Assembly Complete
- HFG602 Spool Assembly - Complete
- H-14852A Fastener - M6 x 1.00-6G 316 (order 4)
- H-15070C Spool Assembly Half
- HFG752 Guard Assembly
- H-24434C Line Guard (order 2)
- H-24435A Mylar Guard Clamp Shim (order 2)
- HFS873 Fastener - M8 x 1.25 GC Screw (order 2)
- HFG874 Hub - Lower Toggle
- HFG119 Lower Toggle
- HFG115 Clevis Pin - Lower Toggle
- HFS117 Cotter Pin
- HFG127 Lock Nut
- HFG128 Lockwasher - Toggle
- HFG129 Flat Washer - Lower Toggle
- HFG718 Hub - w/o Lower Toggle
- 4842 Label - Tack Swivel
- HFG662 Tack Shackle Assembly
- 2117 Shackle - 8 mm (3/16") Bow
- HFG664 Swivel Bracket w/swivel pin
- HCP207 Clevis Pin - 5/16"
- HFS181 Cotter Pin - 3/32" x .750 18-8



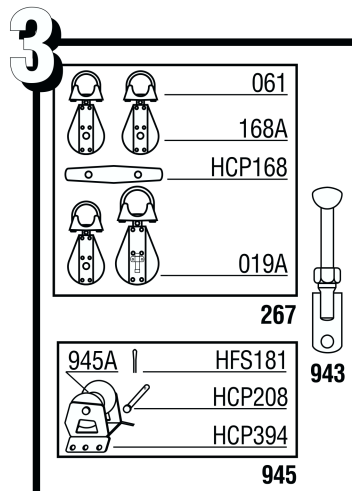
## 1 - Upper Assembly & Components

- 854 Connector Screw Set (38)
- HFG537 Fastener - 10-32 x 1/4" 18-8 Slit Ov
- 855 Wedge Set (22)
- HFG216 Connector Wedge
- 971 Locking Collar - w/Insert
- 971 Collar Collar
- HFG315 Plastic Insert
- 869 Trim Cap
- 897 Extrusion - 7' Luff
- 898 Extrusion - 2' Luff
- 899 Connector - 9"
- 911 Connector - 11.355" Bottom
- 912 Halyard Swivel
- 4456 Label - 3/8" x 2 1/8"
- 2119 Shackle - 8 mm (5/16") Twist
- 2117 Shackle - 8 mm (5/16") Bow
- HCP723 Snap Ring - Large (order 2)
- HCP722 Snap Ring - Small
- HBB7 Ball Bearing - 3/8" Torlon (order 92)
- 984 Torque Tube
- 4753 Label - Small Red Oval
- HFG730 Set Torque Tube Clamp Screws (2)
- HFS335 Fastener - M8 x 1.25 x 35 316 Sk Cap
- 939 Feeder
- HFS192 Fastener - 10-32 x 3/8" 18-8 Slit Ov (order 2)
- HFG137 Extrusion Set (8 Long, 1 Short)
- 897 Extrusion - 7' Luff
- 898 Extrusion - 2' Luff
- HFG635 Fastener Set - Torque Tube (3)
- HFS336 Fastener - M8 x 1.25 x 16 A4 Sk Cap



## 2 - Accessories

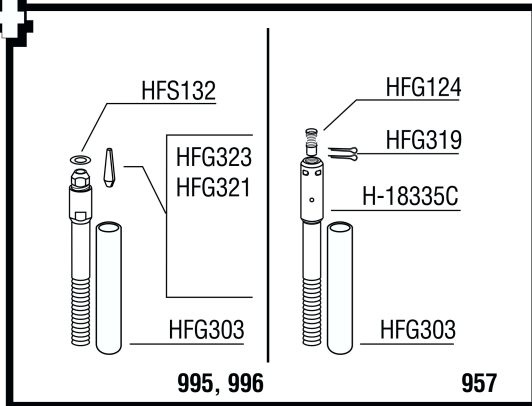
- 4116 Manual - Furling
- 833 Loctite - Blue
- 848 Line - 3/8" x 100'
- 867 Loctite - 2 Red
- 872 Super Glue
- 947 Prefeeder - Phenolic w/Line
- HFG636 Fastener Set - Spare
- HFG643 Wrench - M5 Allen Short
- HFG644 Wrench - M6 Allen Short
- HFG646 Wrench - M8 Allen Long



## 3 - Optional Parts

- 267 Kit - Medium Lead Block
- 019A Block - 2.25" Hex Stbd
- 061 Stanchion Mount Base
- 168A Block - Bullet Swivel
- HCP168 Cleat - 4" Black
- 943 Isomat Adapter
- 945 Halyard Restrainer - Large
- 945A Sheave & SS Inner Race Only
- HCP208 Clevis Pin - 5/16" x 1.250" 18-8
- HCP394 Bracket - Halyard Restrainer - Large
- HFS181 Cotter Pin - 3/32" x .750" 18-8

## 4



### 4 - Studs & Components

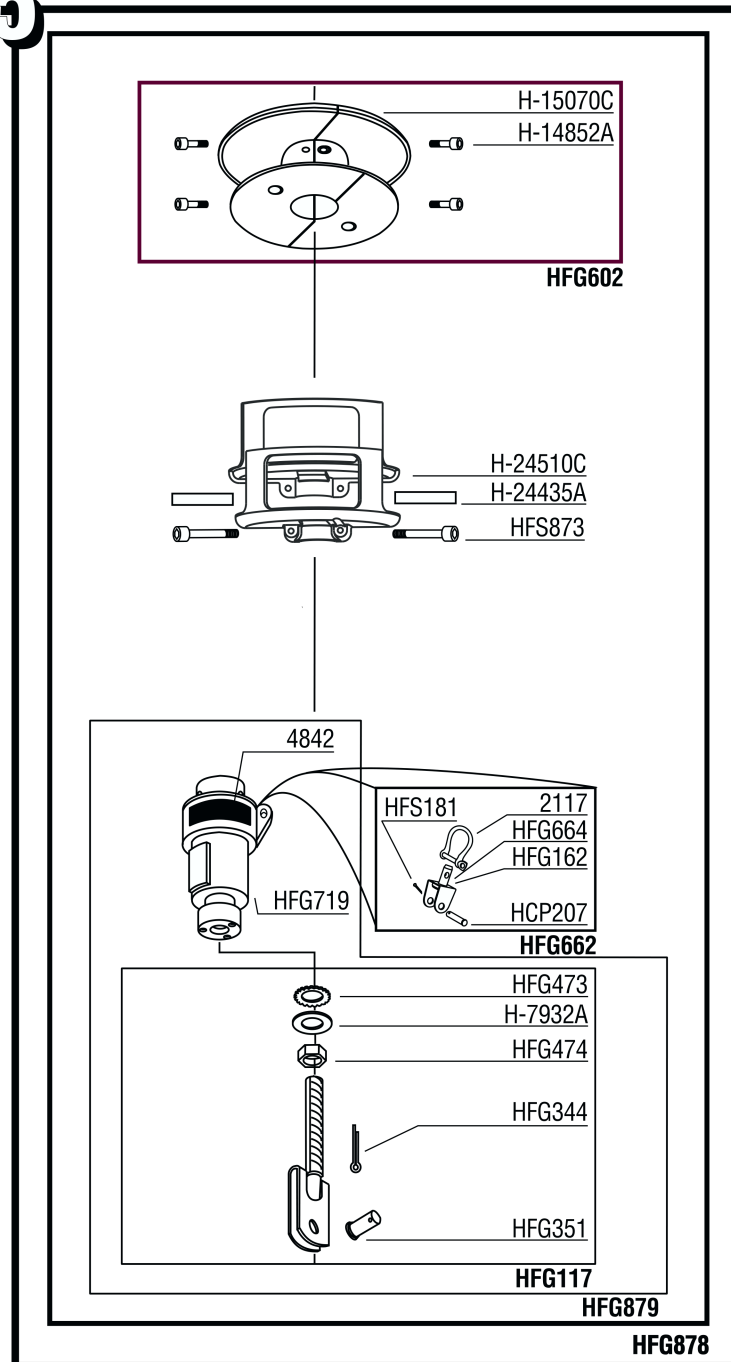
#### Sta-Lok Studs

- HFG303 Stud-Cap - 7/8" ID x 5.5" Red
- 995 Stud - 7/16" (11 mm) Sta-Lok
- HFG323 Wedge - 7/16" (11 mm) Sta-Lok
- HFS132 Washer - 1/2" .062 x .531 x 1.250 18-8
- 996 Stud - 12 mm Sta-Lok
- HFG321 Wedge - 12 mm Sta-Lok
- HFS132 Washer - 1/2" .062 x .531 x 1.250 18-8

#### Rod

- HFG303 Stud-Cap - 7/8" ID x 5.5" Red
- 957 Stud -22 Rod Adpt w/Nosepiece
- H-18335C Stud - Main Body
- HFG124 Nosepiece -22
- HFG319 Cotter Pin - 3/32" x 1.750" 18-8

## 5



### 5 - Drum Assembly & Components

#### HFG878

- HFG878 Drum Assembly Complete
- HFG602 Spool Assembly - Complete
- H-14852A Fastener - M6 x 1.00-6G 316 (order 4)
- H-15070C Spool Assembly Half
- H-24510C Line Guard (order 2)
- HFS873 Fastener - M10 x 1.50 GC Screw (order 2)
- H-24435A Mylar Guard Clamp Shim (order 2)
- HFG879 Hub - Lower Toggle
- HFG117 Lower Toggle
- HFG351 Clevis Pin - Lower Toggle
- HFG344 Cotter Pin
- HFG474 Lock Nut
- HFG473 Lockwasher - Toggle
- H-7932A Flat Washer - Lower Toggle
- HFG879 Hub - w/o Lower Toggle
- 4842 Label - Tack Swivel
- HFG662 Tack Shackle Assembly
- 2117 Shackle - 8 mm (5/16") Bow
- HFG664 Swivel Bracket w/swivel pin
- HCP207 Clevis Pin - 5/16"
- HFG162 Plastic Washer
- HFS181 Cotter Pin - 3/32" x .750 18-8

**Re: Sizes of old and new unit 2 connectors and foils**

We began shipping the new MKII unit 2 / 2.5 connectors and foils during October of 1994.

If you are talking to someone in the field, this chart will help clear up confusion as to which connector/foil a customer may have.

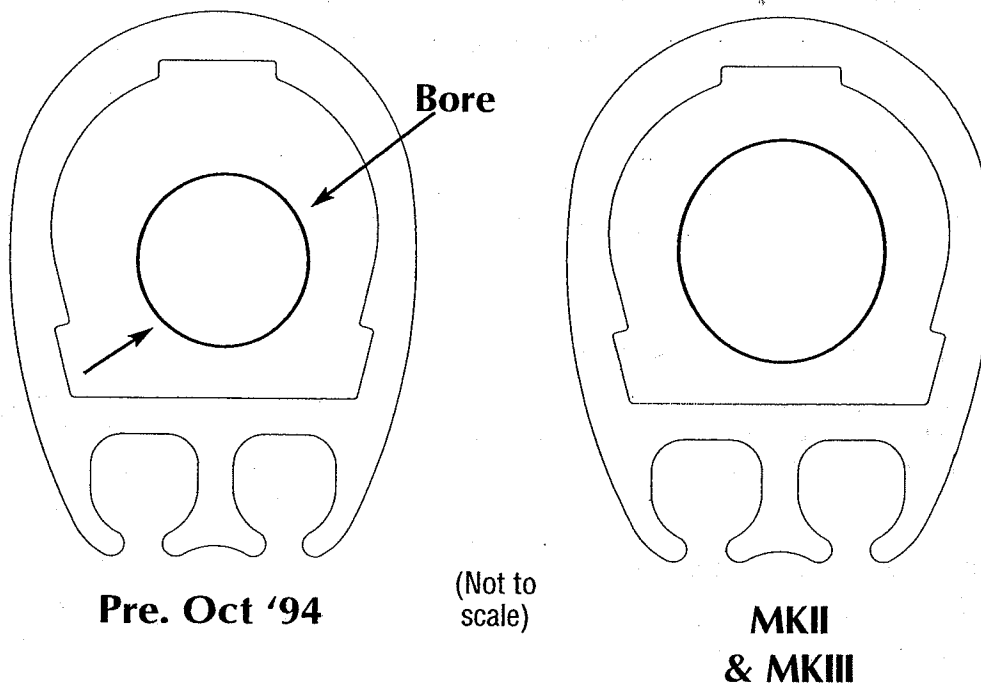
**Unit 2 / 2.5 Connectors**

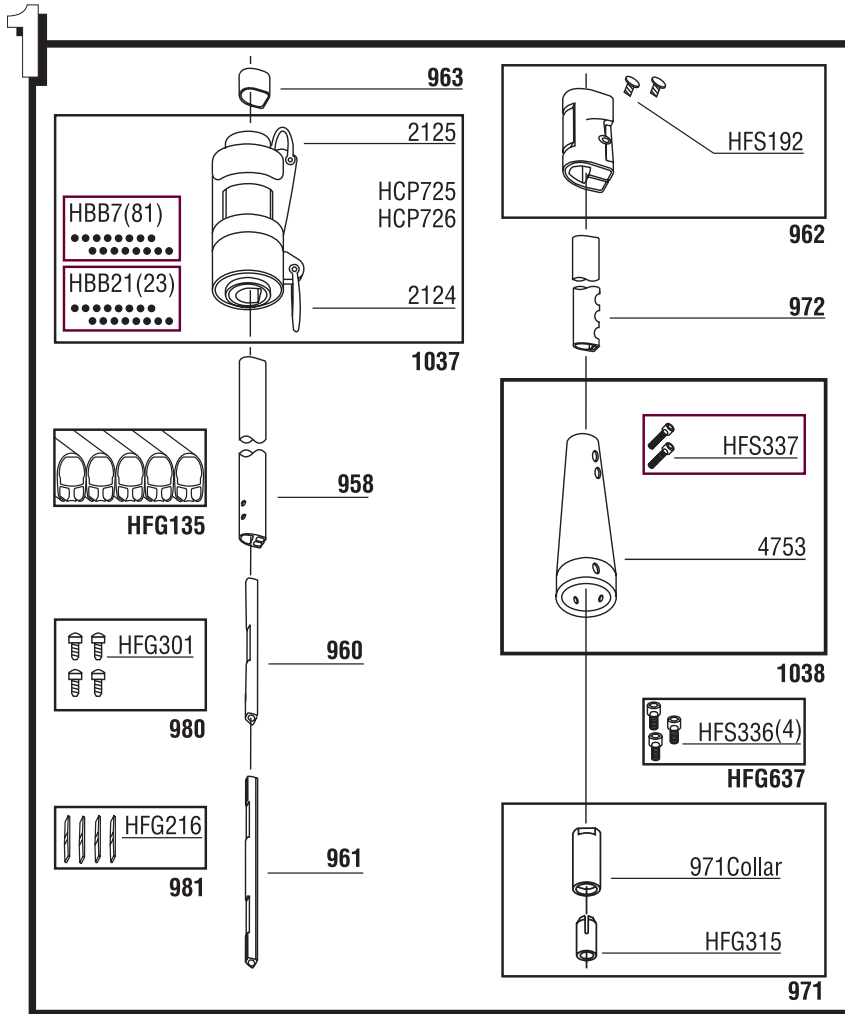
	Old 2 / 2.5	MKII Unit 2 wire Unit 2.5 Rod	MKII 2.5 Wire
Bore	.457"	.457"	.522"
Width	.735"	.835"	.835"
Height	.875"	.875"	.875"

**Unit 2 / 2.5 Foils**

	Old 2 / 2.5	MKII 2 / 2.5
Width	.982"	1.05"
Height	1.42"	1.42"

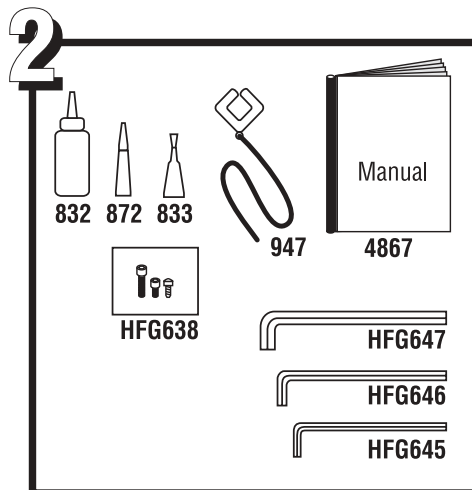
Note: Just the width of the connector and the foil changed. We have also added a larger bore connector for the 7/16", 11 and 12 mm wire in the unit 2.5.





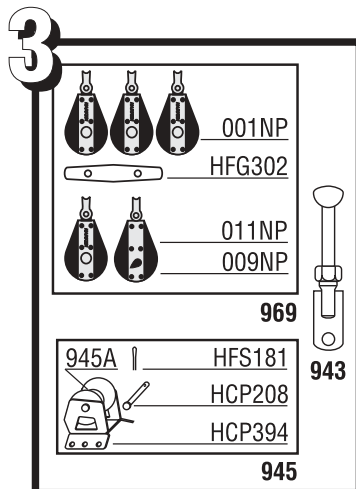
## 1 - Upper Assembly & Components

- 980 Connector Screw Set (69)
- HFG301 Fastener-10-32 x .250 18-8 Slt Fl
- 981 Wedge Set (26)
- HFG216 Connector Wedge
- 971 Locking Collar-w/Insert
- 971Collar Collar
- HFG315 Plastic Insert
- 963 Trim Cap
- 958 Extrusion-7' Luff
- 972 Extrusion-2' Luff
- 960 Connector-10"
- HFG350 Connector-Split Top (optional)
- 961 Connector-13" Bottom
- 1037 Halyard Swivel
- 4456 Label-<sup>3</sup>/<sub>8</sub>" x 2 <sup>1</sup>/<sub>8</sub>"
- 2125 Shackle-10 mm Twist
- 2124 Shackle-10 mm Bow
- HCP726 Snap Ring-Large (order 2)
- HCP725 Snap Ring-Small
- HBB7 Ball Bearing-<sup>3</sup>/<sub>8</sub>" Torlon (order 81)
- HBB21 Ball Bearing-<sup>1</sup>/<sub>2</sub>" Torlon (order 23)
- 1038 Torque Tube
- 4753 Label-Small Red Oval
- HFS337 Fastener-M10x1.50x40 316 Sk Cap (order 2)
- 962 Feeder
- HFS192 Fastener-10-32 x <sup>3</sup>/<sub>8</sub>" 18-8 Slt Ov (order 2)
- HFG135 Extrusion Set (10 Long, 1 Short)
- 958 Extrusion-7' Luff
- 972 Extrusion-2' Luff
- HFG637 Fastener Set-Torque Tube (4)
- HFS336 Fastener-M8x1.25x16 A4 Sk Cap



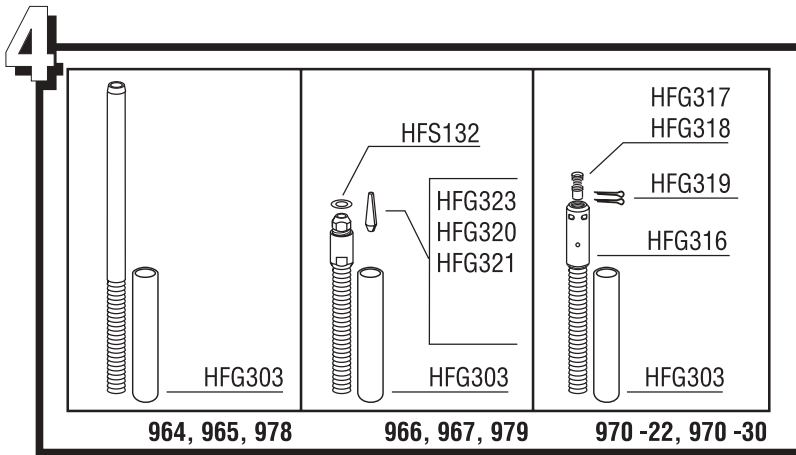
## 2 - Accessories

- 4867 Manual - Furling
- 833 Loctite - Blue
- 832 Loctite - Red
- 872 Super Glue
- 947 Prefeeder - Phenolic w/Line
- HFG638 Fastener Set - Spare
- HFG645 Wrench - M6 Allen Short
- HFG646 Wrench - M8 Allen Short
- HFG647 Wrench - M10 Allen Long



## 3 - Optional Parts

- 969 Kit - Lead Block
- 009NP Block - 3.00" Hex Stbd
- 011NP Block - 3" Cruising
- 001NP Block - 2.25" Swivel
- HFG302 Cleat - 5" Black
- 943 Isomat Adapter - <sup>3</sup>/<sub>4</sub>" (19 mm)
- 945 Halyard Restrainer - Large
- 945A Sheave & SS Inner Race Only
- HCP208 Clevis Pin - <sup>5</sup>/<sub>16</sub>" x 1.250" 18-8
- HCP394 Bracket - Large Halyard Restrainer
- HFS181 Cotter Pin - <sup>3</sup>/<sub>32</sub>" x .750" 18-8



## 4 - Studs & Components

### Swage Studs

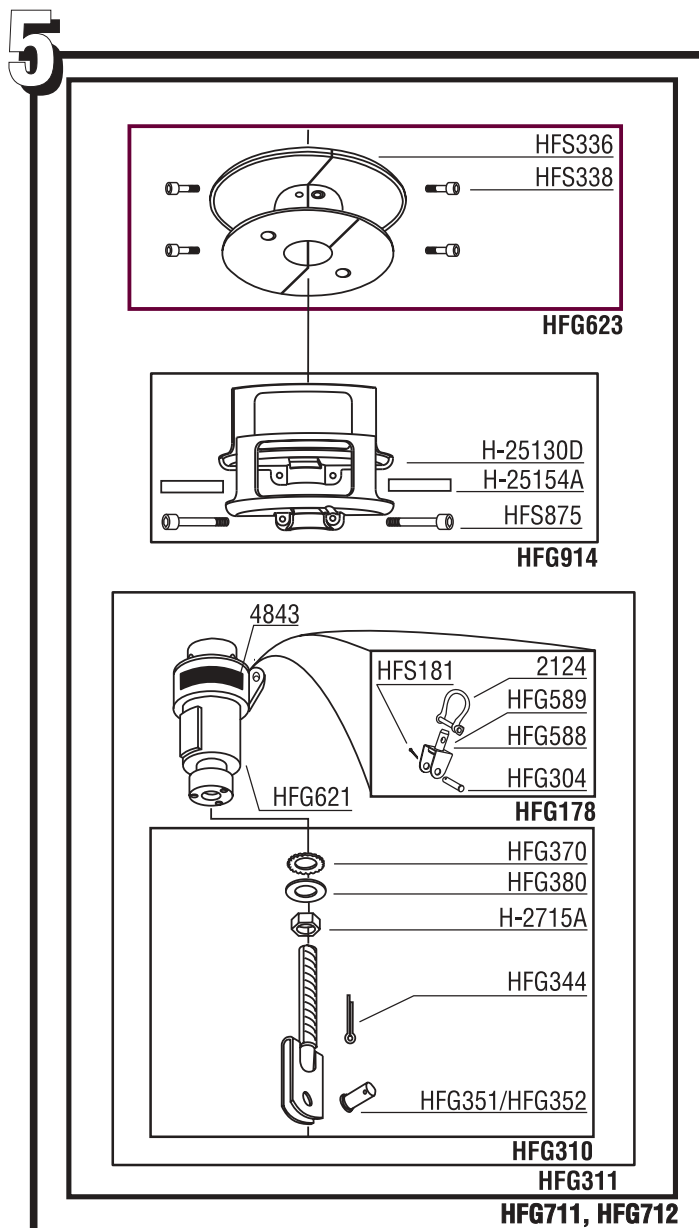
- HFG303 Stud-Cap- $\frac{7}{8}$ " ID x 5.5" Red
- 964 Stud- $\frac{7}{16}$ " (11 mm) Swage
- 965 Stud- $\frac{1}{2}$ " Swage
- 978 Stud-12 mm Swage

### Sta-Lok Studs

- HFG303 Stud-Cap- $\frac{7}{8}$ " ID x 5.5" Red
- 966 Stud- $\frac{7}{16}$ " (11 mm) Sta-Lok
- HFG323 Wedge- $\frac{7}{16}$ " (11 mm) Sta-Lok
- HFS132 Washer- $\frac{1}{2}$ " .062 x .531 x 1.250 18-8 FW
- 967 Stud- $\frac{1}{2}$ " Sta-Lok
- HFG320 Wedge- $\frac{1}{2}$ " Sta-Lok
- HFS132 Washer- $\frac{1}{2}$ " .062 x .531 x 1.250 18-8 FW
- 979 Stud 12 mm Sta-Lok
- HFG321 Wedge-12 mm Sta-Lok
- HFG265 Wedge-12 mm Sta-Lok **Dyform**
- HFS132 Washer- $\frac{1}{2}$ " .062 x .531 x 1.250 18-8 FW

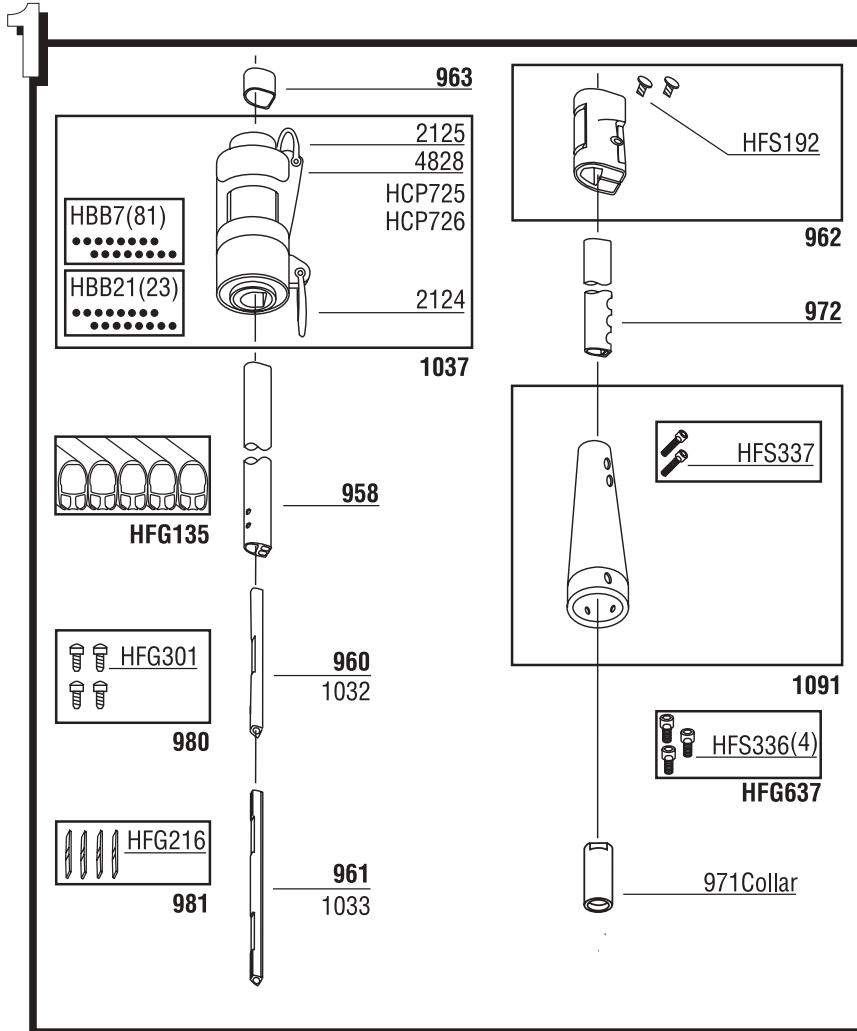
### Rod

- HFG303 Stud-Cap- $\frac{7}{8}$ " ID x 5.5" Red
- 970 -22 Stud -22 Rod Adpt w/Nosepiece
- HFG316 Stud-Main Body
- HFG317 Nosepiece -22
- HFG319 Cotter Pin- $\frac{3}{32}$ " x 1.750" 18-8
- 970 -30 Stud-30 Rod Adpt w/Nosepiece
- HFG316 Stud-Main Body
- HFG318 Nosepiece-30
- HFG319 Cotter Pin- $\frac{3}{32}$ " x 1.750" 18-8



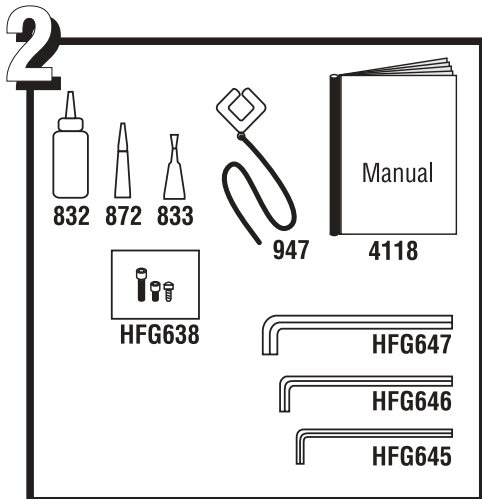
## 5 - Drum Assembly & Components

- HFG711 Drum Assembly  $\frac{3}{4}$ " Clevis - Complete
- HFG712 Drum Assembly  $\frac{7}{8}$ " Clevis - Complete
- HFG623 Spool Assembly-Complete
- HFS336 M8 x 1.25X16 A4 SK Cap (4)
- HFS338 M4 X 8 18-8 PH OV (2)
- HFG914 Drum Assembly  $\frac{7}{8}$ " Clevis - Complete
- H-25130D Line Guard (order 2)
- HFS875 Fastener-M12 x 1.75 x 70 mm SK Screw (order 2)
- H-25154A Mylar Guard Clamp Shim(order 2)
- HFG310 Lower Toggle- $\frac{3}{4}$ " Clevis Pin
- HFG311 Lower Toggle- $\frac{7}{8}$ " Clevis Pin
- HFG351 Clevis Pin- $\frac{3}{4}$ " Lower Toggle
- HFG352 Clevis Pin- $\frac{7}{8}$ " Lower Toggle
- HFS344 Cotter Pin
- H-2715A Lock Nut
- HFG370 Lock Wash-Toggle
- HFG380 Flat Washer-Lower Toggle
- HFG621 Hub-w/o Lower Toggle
- 4843 Label Tack Swivel
- HFG178 Tack Shackle Assembly
- 2124 Shackle-10 mm Bow
- HFG588 Swivel Bracket w/Swivel Pin
- HFG304 Clevis Pin- $\frac{3}{8}$ " X 1.500" 18-8
- HFS181 Cotter Pin-.094 x .750 18-8



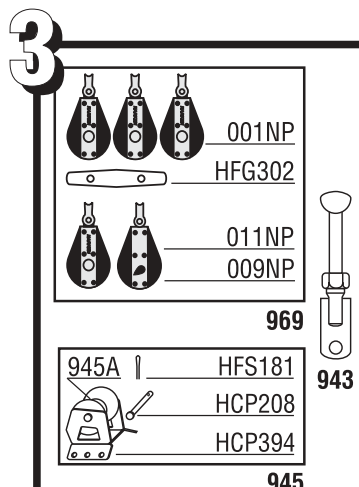
## 1 - Upper Assembly & Components

- 980 Connector Screw Set (69)  
HFG301 Fastener - 10-32 x .250 18-8 Slit Fl
- 981 Wedge Set (26)  
HFG216 Connector Wedge
- 971 Collar Locking Collar
- 963 Trim Cap
- 958 Extrusion - 7' Luff
- 972 Extrusion - 2' Luff
- 960 Connector - 10" - Rod
- 1032 Connector 10" - Wire
- 961 Connector - 13" Bottom Rod
- 1033 Connector - 13" Bottom Wire
- 1037 Halyard Swivel  
4456 Label - Up  
2125 Shackle - 10 mm Twist  
2124 Shackle - 10 mm Bow  
HCP726 Snap Ring - Large (order 2)  
HCP725 Snap Ring - Small  
HBB7 Ball Bearing - 3/8" Torlon (order 81)  
HBB21 Ball Bearing - 1/2" Torlon (order 23)
- 1091 Torque Tube  
HFS337 Fastener - M10x1.50x40 316 Sk Cap (order 2)
- 962 Feeder  
HFS192 Fastener - 10-32 x 3/8" 18-8 Slit Ov (order 2)
- HFG135 Extrusion Set (10 Long, 1 Short)  
958 Extrusion - 7' Luff  
959 Extrusion - 2' Luff
- HFG637 Fastener Set - Torque Tube (4)  
HFS336 Fastener - M8x1.25x16 A4 Sk Cap



## 2 - Accessories

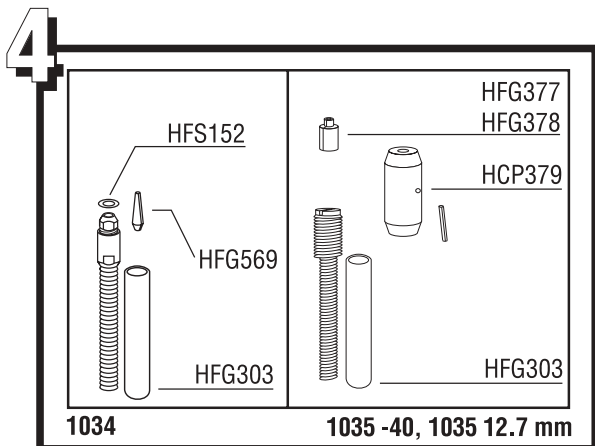
- 4118 Manual - Furling
- 833 Loctite - Blue
- 832 Loctite - Red
- 872 Super Glue
- 947 Prefeeder - Phenolic w/Line
- HFG638 Fastener Set - Spare
- HFG645 Wrench - M6 Allen Short
- HFG646 Wrench - M8 Allen Short
- HFG647 Wrench - M10 Allen Long



## 3 - Optional Parts

- 969 Kit - Lead Block  
009NP Block - 3.00" Hex Stbd  
011NP Block - 3" Cruising  
001NP Block - 2.25" Swivel  
HFG302 Cleat - 5" Black
- 943 Isomat Adapter - 3/4" (19 mm)
- 945 Halyard Restrainer - Large  
945A Sheave & SS Inner Race Only  
HCP208 Clevis Pin - 5/16" x 1.250" 18-8  
HCP394 Bracket - Large Halyard Restrainer  
HFS181 Cotter Pin - 3/32" x .750" 18-8





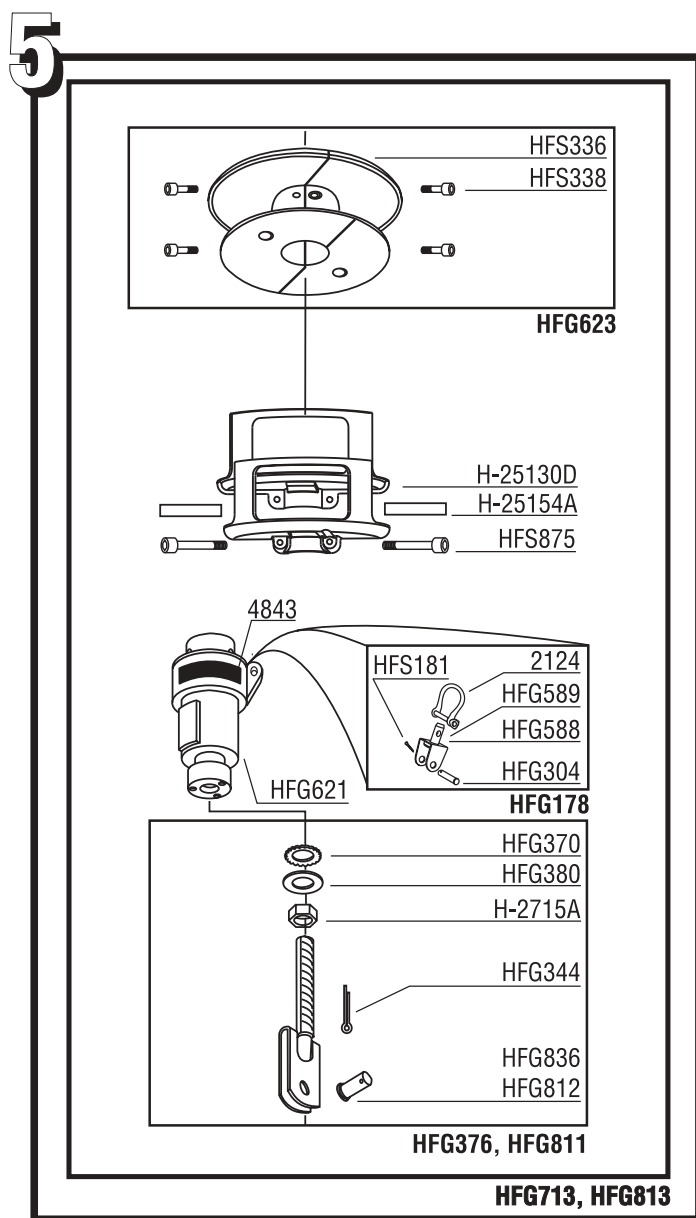
## 4 - Studs & Components

### Sta-Lok Stud

- 1034 Stud - 9/16" (14 mm) Sta-Lok  
Wedge - 9/16" (14 mm) Sta-Lok  
Washer - 5/8" .075 x .688 x 1.5 18-8 FW  
Stud-Cap - 7/8" ID x 5.5" Red

### Rod

- 1035 -40 Stud -40 Rod Adpt w/Nosepiece Navtec  
Stud - Main Body w/Housing & Drive Pin  
Nosepiece -40 Navtec  
Stud-Cap - 7/8" ID x 5.5" Red
- 1035 12.7 mm Stud -40 Rod Adpt w/Nosepiece Riggarna  
Stud - Main Body w/Housing & Drive Pin  
Nosepiece 12.7 mm Riggarna  
Stud-Cap - 7/8" ID x 5.5" Red



## 5 - Drum Assembly & Components

- HFG713 Drum Assembly 7/8" Clevis - Complete
- HFG813 Drum Assembly 1" Clevis - Complete
- HFG623 Spool Assembly - Complete
- HFS336 M8 x 1.25X16 A4 SK Cap (4)
- HFS338 M4 X 8 18-8 PH OV (2)
- H-25130D Line Guard (order 2)
- HFS875 Fastener - M12 x 1.75 x 70 mm SK Screw (order 2)
- H-25154A Mylar Guard Clamp Shim (order 2)
- HFG376 Lower Toggle - 7/8" Clevis Pin
- HFG811 Lower Toggle - 1" Clevis Pin
- HFG836 Clevis Pin - 7/8" Lower Toggle
- HFG812 Clevis Pin - 1" Lower Toggle
- HFS344 Cotter Pin
- H-2715A Lock Nut
- HFG370 Lock Wash - Toggle
- HFG380 Flat Washer - Lower Toggle
- HFG621 Hub - w/o Lower Toggle
- 4843 Label Tack Swivel
- HFG178 Tack Shackle Assembly
- 2124 Shackle - 10 mm Bow
- HFG589 Swivel Bracket w/Swivel Pin
- HFG304 Clevis Pin - 3/8" X 1.500" 18-8
- HFS181 Cotter Pin - .094 x .750 18-8