



STA-LOK[®]



Marine Rigging Hardware



USA 2023 Price List



“
RELIABILITY AND
ENDURANCE ARE AT
THE FOREFRONT OF
EVERYTHING WE DO.
”

Sta-Lok Self-Fit Terminals	08
Sta-Lok Insulators	24
Sta-Lok Swage Terminals	28
Sta-Lok Bronze Turnbuckles	38
Sta-Lok Supajust Turnbuckles	42
Sta-Lok Threaded End Fittings	46
Marine Toggles	54
Sta-Lok Guard Rails & Life Line Fittings	56
Other Products & Accessories	64

FOR THE MOST BEAUTIFUL
BOATS CHOOSE STA-LOK.

Sta-Lok have been supplying the global marine industry for more than 50 years after first introducing our products at the International London Boat show in 1973.

Our products are designed with safety in mind, manufactured using high specification stainless steels, selected for their strength and corrosion resistance.

Our dedication to design, manufacturing and customer service means reliability

and endurance are at the forefront of everything we do. After all, our products must stand up to the most challenging of climatic conditions.

We are proud to be ISO 9001 accredited, re-enforcing our passion for quality through our entire company and our product range.

Today, our extensive range of fittings and wire rope makes Sta-Lok the preferred choice for professionals and sail boat owners alike.



CELEBRATING 50 YEARS OF STA-LOK

It is now more than 50 years since the first introduction of Sta-Lok at the 1973 International London Boat show and our heritage is the source of our continued inspiration.

Developed by our Founder, Ivor Barfield, in an era without technology and where everything was crafted by hand, we are extremely proud to have retained our roots as a family run UK manufacturer.

Although so much has changed over 50 years, with continuous investment in advanced manufacturing, we still hold dear those family values on which our business was originally founded, where exceptional customer service and quality are engrained into our company culture.

We have a rich history, engrained with inspiring stories, beautiful boats and stunning architecture. We believe in producing products that make adventures possible and visions a reality.



Terry Barfield

TERRY BARFIELD
Managing Director



Our 2023 Price List

Trade Accounts

Sta-Lok's Marine market is built upon key relationships with riggers, resellers and distributors, forming a global reseller network to support yacht owners worldwide.

If you would like to add Sta-Lok to your product offering, please make contact and our team will be happy to discuss your requirements further.

UK Head Office

+44 (0) 1206 390 773
enquiries@stalok.com
stalok.com

USA Office

910 259 3394
usa@stalok.com

Sta-Lok Trademark

Sta-Lok is a registered trade mark and company logos should not be used without prior approval by said company.

Pricing Policy

Prices displayed show our recommended retail price. Individual trade accounts and discount programmes to suit the needs of your business can be arranged.

Every effort has been made to ensure that prices are correct at the time of printing.

Prices can be subject to alteration throughout the year and may be changed without notice.

All prices listed are shown in £'s Sterling or \$ US Dollars as noted. All prices are exclusive of VAT, sales taxes and delivery costs.

Returns Policy

Rigging hardware manufactured by Sta-Lok is guaranteed at the time of shipment, to be free of defects in material and craftsmanship and only when used for the purpose intended.

Returned goods will not be accepted without notification and without prior approval by

Sta-Lok Terminals Ltd. All returns must be prepaid and in a re-saleable condition before a credit can be issued.

Technical Information

Ongoing product development means that product specification may change.

Every effort has been made to ensure that technical information displayed is correct at the time of printing.

For any dimensions or product details, break loads, etc. not shown, please make contact with us, and our technical team will be happy to provide.

Useful Life and Liability

Yacht rigging should be inspected, checked and maintained regularly by an experienced yacht rigger or surveyor.

Many elements, including usage, environment and standard of maintenance can affect the lifetime of your rigging and thus, no guarantee can be provided for product life, load capacity or other factors due to variability in usage.

Some regulatory body's and insurances will require the replacement of rigging and rigging components within certain time frames. You should ascertain if and what regulations apply to you, your yacht/vessel or your project to determine the relevant time-scales for replacement and qualified inspections.

Sta-Lok Terminals Ltd does not assume any responsibility for any incidental or consequential damages in connection with the use of its products.

Sta-Lok does not accept responsibility for products used in applications where safe working loads are exceeded, product has been improperly installed, and/or the product has been modified.

For full information, please refer to our Terms and Conditions at the back of this brochure.

The Clipper Round the World Yacht Race is one of the toughest endurance challenges on the planet. This unique, epic event sees teams battle extreme conditions as they race more than 40,000 nautical miles between ports around the globe in a true test of fortitude and determination.

Sta-Lok was announced as the first Official Standing Rigging Partner for the Clipper 70s in 2017. We returned as the Official Standing Rigging Partner for both the Clipper 2019-20 Race and Clipper 2023-24 Race, supplying bespoke fittings and over 2150 metres of wire to prepare the race fleet.

“

Our fleet of 70-foot ocean racers are put to the ultimate test during their circumnavigation, so it is essential their rigging can stand up to the challenge. With more than 40 years' experience providing rigging hardware, we are very pleased to welcome Sta-Lok as our first Official Standing Rigging Partner.

”

SIR ROBIN KNOX-JOHNSTON

CLIPPER VENTURES NON-EXECUTIVE DIRECTOR &
PRESIDENT AND CLIPPER RACE FOUNDER



Sta-Lok Self-Fit Terminals



The Sta-Lok system is a simple mechanical method of terminating 1x19, 7x7, 7x19 and compacted strand wire ropes.

Over 49 years since its inception, Sta-Lok terminals are used around the world and have gained world-wide recognition for high quality and reliability.

All Sta-Lok terminals can be installed using very simple hand tools and can be used for right hand and left hand lay, stainless steel wire rope from 3mm - 26mm (1/8" - 1").

The Sta-Lok terminal will work under constant loading and variable shock loading. The termination is stronger than the rated breaking load of the wire rope we recommend.

Please note:

1. Sta-Lok Terminals have been designed for use with stainless steel wire ropes. They should not be used with Galvanized wire ropes because galvanic action will cause the wire rope to corrode and fail.
2. Sta-Lok Terminals are not suitable for use with wire ropes with fibre cores.
3. Sta-Lok Terminals are not suitable for lifting slings.

In all situations the Sta-Lok terminal has proven to be totally reliable and is re-usable*

- Manufactured from high specification 316 stainless steel
- Hand fitted instead of machined swage
- Low Maintenance Costs
- Assemble on site, easy to install with simple hand tools
- No pre-measurement required
- A different wedge is required for 1x19, 7 strand and compacted strand wire rope
- All our wedges are laser marked for easy identification and selection

**A new wedge is required when re-terminating wire.*

**Many elements, including usage, environment and standard of maintenance can affect the lifetime of your rigging. All fittings should be inspected, checked and maintained regularly.*

How to fit a Sta-Lok Terminal

Stage 1

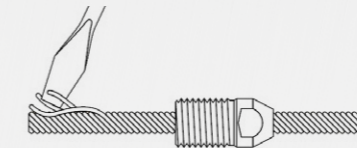
Slide socket component over wire.

TIP: Wind tape around wire approx. 12" (300mm) from end. This will prevent the socket from sliding down the wire.



Stage 2

Unravel outer strands 2" to 3" (50-76mm) to expose central core.



Stage 3

Slide wedge component over central core of wire rope



Please note:

Threads have been treated with anti-seizing gel to prevent galling.

Where it is decided to use loctite, threads should be cleaned.

You should refer to your chosen thread lock instructions / guidelines.

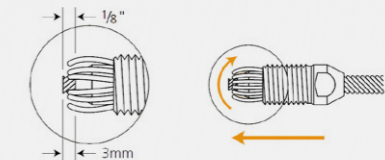
Stage 4

Reposition outer strands.

Turn outer strands either clockwise or anti-clockwise, depending on the lay of the wire, around the wedge. Ensure approx. 1/8" (2-3mm) of the central core protrudes from the end of the wedge.

Outer strands should be evenly situated around the wedge. Care should be taken to ensure that a strand does not slip into the slit of the wedge.

TIP: Push the socket towards end of wire, while repositioning the outer strands, this will help control. When wire strands are in position, push socket firmly, to hold wires in position.



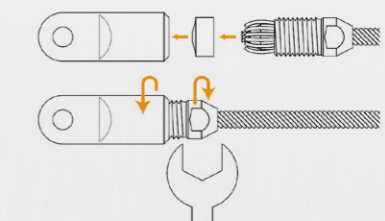
Stage 5

Final Assembly.

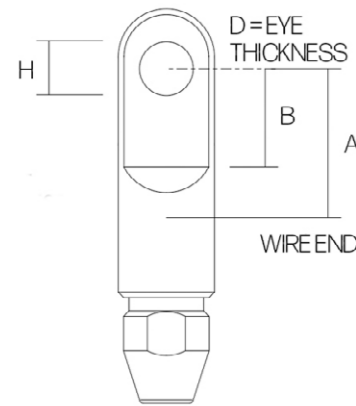
Ensure former component sits in bottom of end fitting. Screw socket assembly into end fitting and tighten with spanners.

The assembly is now complete.

TIP: Undue force is not required to terminate the wire. We would recommend taking the fitting back apart to check that the termination was successful (the outer wires folded over the wedge component).



Sta-Lok Eye

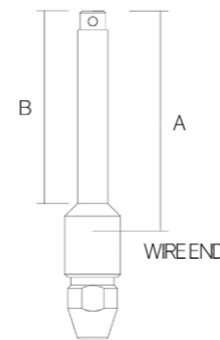


- Sta-Lok Self-Fit Terminal, the reusable alternative to machine swaging
- Quick and easy to install by hand, using basic hand tools
- Packed for 1×19 wire as standard - Different wedges are available to terminate 7 strand & compacted strand wire ropes
- Wedges should be replaced when re-terminating

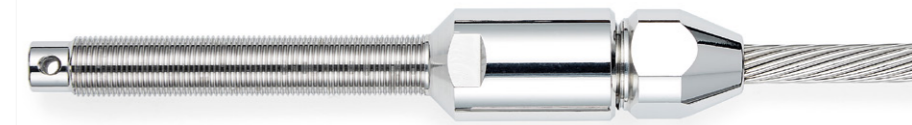


Reference	Wire Size (MM)	Wire Size (Inch)	A (MM)	A (Inch)	B (MM)	B (Inch)	D (MM)	D (Inch)	H (MM)	H (Inch)	Weight (KG)	Weight (LB)	Price (\$)
033-03	3 MM	1/8"	17.9	0.705	10.0	0.393	5.0	0.196	6.5	1/4"	0.020	0.044	43.10
033-04	4 MM	5/32"	20.3	0.800	14.7	0.580	5.8	0.230	8.0	5/16"	0.040	0.088	46.50
033-05	5 MM	-	24.4	0.960	18.0	0.710	7.5	0.295	10.0	3/8"	0.080	0.176	55.58
133-05	-	3/16"	24.4	0.960	18.0	0.710	7.5	0.295	10.0	3/8"	0.080	0.176	55.58
133-55-3/8	-	7/32"	32.4	1.276	23.7	0.933	9.5	0.375	10.0	3/8"	0.140	0.309	71.45
133-55-7/16	-	7/32"	31.7	1.248	23.0	0.904	9.5	0.375	11.5	7/16"	0.140	0.309	71.45
133-55-1/2	-	7/32"	31.0	1.219	22.2	0.875	9.5	0.375	13.0	1/2"	0.140	0.309	71.45
033-06	6 MM	-	31.0	1.219	22.2	0.875	9.5	0.375	13.0	1/2"	0.140	0.309	71.45
133-06-3/8	-	1/4"	32.4	1.276	23.7	0.933	9.5	0.375	10.0	3/8"	0.140	0.309	71.45
133-06-7/16	-	1/4"	31.7	1.248	23.0	0.904	9.5	0.375	11.5	7/16"	0.140	0.309	71.45
133-06	-	1/4"	31.0	1.219	22.2	0.875	9.5	0.375	13.0	1/2"	0.140	0.309	71.45
033-07	7 MM	9/32"	32.5	1.281	24.6	0.969	10.5	0.413	13.0	1/2"	0.160	0.353	81.66
033-08-1/2	8 MM	5/16"	35.7	1.406	27.0	1.062	12.0	0.472	13.0	1/2"	0.240	0.529	99.81
033-08-5/8	8 MM	5/16"	35.7	1.406	27.0	1.062	13.5	0.531	16.0	5/8"	0.280	0.617	122.49
033-10	10 MM	-	41.1	1.619	29.2	1.150	13.5	0.531	16.0	5/8"	0.340	0.750	150.85
033-10-3/4	10 MM	-	41.1	1.619	29.2	1.150	13.5	0.531	19.5	3/4"	0.400	0.882	155.08
133-10	-	3/8"	41.1	1.619	29.2	1.150	13.5	0.531	16.0	5/8"	0.340	0.750	150.85
133-10-3/4	-	3/8"	41.1	1.619	29.2	1.150	13.5	0.531	19.5	3/4"	0.400	0.882	155.08
133-11	-	7/16"	42.8	1.687	33.3	1.312	19.0	0.748	19.5	3/4"	0.680	1.499	230.87
033-12	12 MM	-	42.8	1.687	33.3	1.312	19.0	0.748	19.5	3/4"	0.680	1.499	289.75
133-12	-	1/2"	42.8	1.687	33.3	1.312	19.0	0.748	19.5	3/4"	0.680	1.499	289.75
133-12-7/8	-	1/2"	42.8	1.687	33.3	1.312	19.0	0.748	22.5	7/8"	0.700	1.543	416.85
033-14	14 MM	9/16"	55.6	2.187	38.1	1.500	20.0	0.788	22.5	7/8"	1.100	2.425	448.91
033-14-1	14 MM	9/16"	55.6	2.187	38.1	1.500	20.0	0.788	25.4	1"	1.220	2.690	485.06
033-16	16 MM	5/8"	59.0	2.326	40.0	1.576	20.0	0.788	22.5	7/8"	1.420	3.131	521.79
033-16-1	16 MM	5/8"	60.0	2.364	40.0	1.576	20.0	0.788	25.4	1"	1.700	3.748	537.53
033-19	19 MM	3/4"	68.3	2.687	49.2	1.937	27.0	1.062	28.6	1 1/8"	2.820	6.217	1,102.45
033-22	22 MM	7/8"	82.6	3.250	60.3	2.375	33.3	1.312	35.0	1 3/8"	3.960	8.730	1,314.67
033-26	26 MM	1"	86.0	3.375	60.3	2.375	33.3	1.312	35.0	1 3/8"	5.300	11.684	1,729.18

Sta-Lok Stud



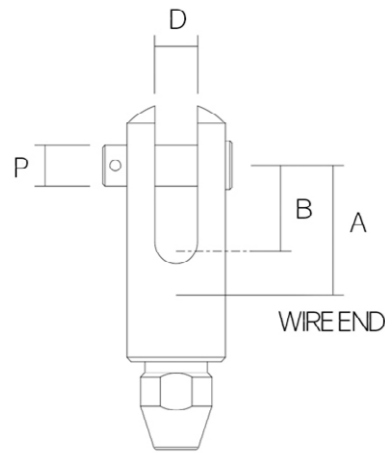
- Manufactured from high specification 316 stainless steel
- Suitable for right hand and left hand lay wire rope
- Sta-Lok Studs available in Right hand thread only and are supplied with split pin
- Packed for 1×19 wire as standard



Reference	Wire Size (MM)	Wire Size (Inch)	Thread (UNF)	A (MM)	A (Inch)	B (MM)	B (Inch)	Weight (KG)	Weight (LB)	Price (\$)
036-03	3 MM	1/8"	1/4"	64.3	2.532	55.6	2.187	0.020	0.044	67.48
036-04-1/4	4 MM	5/32"	1/4"	65.0	2.562	55.6	2.187	0.040	0.088	51.61
036-04	4 MM	5/32"	5/16"	67.5	2.656	58.7	2.312	0.060	0.132	51.61
036-05-5/16	5 MM	-	5/16"	70.6	2.780	58.7	2.312	0.080	0.176	60.68
036-05	5 MM	-	3/8"	78.0	3.062	66.7	2.625	0.080	0.176	60.68
136-05-5/16	-	3/16"	5/16"	65.0	2.562	58.7	2.312	0.080	0.176	60.68
136-05	-	3/16"	3/8"	78.0	3.062	66.7	2.625	0.080	0.176	60.68
136-55	-	7/32"	3/8"	84.0	3.312	66.7	2.625	0.120	0.265	78.83
136-55-7/16	-	7/32"	7/16"	85.0	3.343	74.6	2.937	0.140	0.309	78.83
136-55-1/2	-	7/32"	1/2"	94.0	3.687	81.0	3.187	0.160	0.353	78.83
036-06-3/8	6 MM	-	3/8"	84.0	3.312	66.7	2.625	0.120	0.265	78.83
036-06	6 MM	-	7/16"	93.0	3.656	74.6	2.937	0.140	0.309	78.83
136-06-3/8	-	1/4"	3/8"	84.0	3.312	66.7	2.625	0.120	0.265	78.83
136-06	-	1/4"	7/16"	93.0	3.656	74.6	2.937	0.140	0.309	78.83
136-06-1/2	-	1/4"	1/2"	94.0	3.687	81.0	3.187	0.160	0.353	78.83
036-07-7/16	7 MM	9/32"	7/16"	95.0	3.750	74.6	2.937	0.180	0.397	96.41
036-07	7 MM	9/32"	1/2"	97.0	3.812	81.0	3.187	0.200	0.441	96.41
036-08	8 MM	5/16"	1/2"	98.0	3.875	81.0	3.187	0.240	0.529	115.12
036-08-5/8	8 MM	5/16"	5/8"	110.0	4.343	95.2	3.750	0.300	0.661	115.12
036-10	10 MM	-	5/8"	111.0	4.375	95.2	3.750	0.360	0.794	163.89
036-10-3/4	10 MM	-	3/4"	129.0	5.062	123.8	4.875	0.480	1.058	177.23
136-10	-	3/8"	5/8"	111.0	4.375	95.2	3.750	0.360	0.794	163.89
136-10-3/4	-	3/8"	3/4"	129.0	5.062	123.8	4.875	0.480	1.058	177.23
136-11	-	7/16"	3/4"	139.0	5.468	123.8	4.875	0.760	1.676	267.60
136-11-7/8	-	7/16"	7/8"	168.0	5.625	139.7	5.500	0.880	1.940	352.72
036-12	12 MM	-	3/4"	139.0	5.468	123.8	4.875	0.760	1.676	298.50
036-12-7/8	12 MM	-	7/8"	168.0	5.625	139.7	5.500	0.880	1.940	352.72
136-12	-	1/2"	3/4"	139.0	5.468	123.8	4.875	0.760	1.676	298.50
136-12-7/8	-	1/2"	7/8"	162.0	6.375	139.7	5.500	0.880	1.940	352.72
036-14	14 MM	9/16"	7/8"	170.0	6.687	139.7	5.500	1.300	2.866	482.03
036-14-100	14 MM	9/16"	1"	170.0	6.687	139.7	5.500	1.420	3.131	527.49
036-16	16 MM	5/8"	1"	171.0	6.750	139.7	5.500	1.660	3.660	600.49
036-19	19 MM	3/4"	1 1/8"	213.0	8.375	171.5	6.750	3.140	6.923	1,301.84
036-22	22 MM	7/8"	1 1/4"	275.0	10.812	227.0	8.937	4.540	10.009	1,799.72
036-26	26 MM	1"	1 3/8"	284.0	11.187	232.0	9.125	5.100	11.244	2,110.46

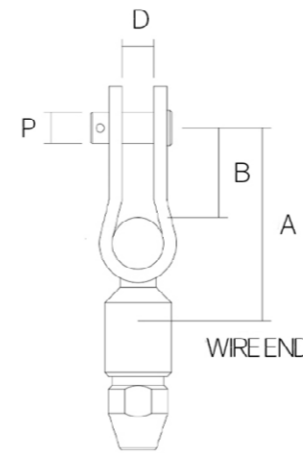
Sta-Lok Fork

- Sta-Lok Self-Fit Terminal, the reusable alternative to machine swaging
- Quick and easy to install by hand, using basic hand tools
- Packed for 1×19 wire as standard - Different wedges are available to terminate 7 strand & compacted strand wire ropes
- Wedges should be replaced when re-terminating



Sta-Lok Toggle Fork

- Manufactured from high specification 316 stainless steel
- Suitable for right hand and left hand lay wire rope
- Packed for 1×19 wire as standard - Different wedges are available to terminate 7 strand & compacted strand wire ropes
- Wedges should be replaced when re-terminating

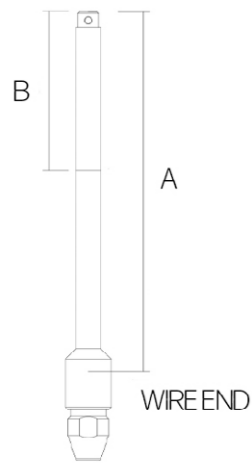


Reference	Wire Size (MM)	Wire Size (Inch)	A (MM)	A (Inch)	B (MM)	B (Inch)	D (MM)	D (Inch)	P (MM)	P (Inch)	Weight (KG)	Weight (LB)	Price (\$)
034-03	3 MM	1/8"	15.5	0.609	10.0	0.393	5.5	0.216	5.0	3/16"	0.040	0.088	52.17
034-04	4 MM	5/32"	21.1	0.830	14.7	0.580	6.4	0.250	6.4	1/4"	0.060	0.132	60.11
034-05	5 MM	-	29.5	1.162	18.0	0.708	8.0	0.315	8.0	5/16"	0.100	0.220	68.05
134-05	-	3/16"	29.5	1.162	18.0	0.708	8.0	0.315	8.0	5/16"	0.100	0.220	68.05
134-55	-	7/32"	37.1	1.459	22.2	0.875	11.1	0.437	10.9	7/16"	0.220	0.485	93.57
034-06	6 MM	-	37.1	1.459	22.2	0.875	11.1	0.437	10.9	7/16"	0.220	0.485	93.57
134-06	-	1/4"	37.1	1.459	22.2	0.875	11.1	0.437	10.9	7/16"	0.220	0.485	93.57
034-07	7 MM	9/32"	33.9	1.333	25.1	0.990	11.1	0.437	10.9	7/16"	0.240	0.529	124.19
034-07-1/2	7 MM	9/32"	43.9	1.729	26.3	1.035	13.7	0.540	12.6	1/2"	0.420	0.926	148.01
034-08	8 MM	5/16"	43.9	1.729	26.3	1.035	13.7	0.540	12.6	1/2"	0.420	0.926	148.01
034-10	10 MM	-	50.1	1.973	29.4	1.155	13.7	0.540	15.6	5/8"	0.620	1.367	184.87
134-10	-	3/8"	50.1	1.973	29.4	1.155	13.7	0.540	15.6	5/8"	0.620	1.367	184.87
134-11	-	7/16"	46.0	1.812	33.3	1.312	19.1	0.750	18.5	3/4"	1.180	2.601	472.23
034-12	12 MM	-	46.0	1.812	33.3	1.312	19.1	0.750	18.5	3/4"	1.180	2.601	472.23
134-12	-	1/2"	46.0	1.812	33.3	1.312	19.1	0.750	18.5	3/4"	1.180	2.601	472.23
034-14	14 MM	9/16"	54.0	2.125	38.1	1.500	20.4	0.803	21.5	7/8"	1.580	3.483	587.08
034-16	16 MM	5/8"	72.7	2.861	40.0	1.576	20.4	0.803	25.0	1"	1.980	4.365	750.90
034-19	19 MM	3/4"	92.0	3.622	50.0	1.970	27.8	1.093	27.5	1 1/16"	4.100	9.039	1420.77
034-22	22 MM	7/8"	92.0	3.622	60.3	2.375	34.9	1.375	33.0	1 5/16"	5.600	12.346	1679.04
034-26	26 MM	1"	92.0	3.622	60.3	2.375	34.9	1.375	33.0	1 5/16"	7.600	16.755	2375.56

Reference	Wire Size (MM)	Wire Size (Inch)	A (MM)	A (Inch)	B (MM)	B (Inch)	D (MM)	D (Inch)	P (MM)	P (Inch)	Weight (KG)	Weight (LB)	Price (\$)
050-04	4 MM	5/32"	48.0	1.890	19.0	0.750	8.4	0.331	7.9	5/16"	0.080	0.176	75.42
050-05-5/16	5 MM	-	48.0	1.890	19.0	0.750	8.4	0.331	7.9	5/16"	0.100	0.220	81.66
050-05	5 MM	-	56.0	2.205	20.0	0.787	9.9	0.390	9.5	3/8"	0.140	0.309	84.50
150-05-5/16	-	3/16"	48.0	1.890	19.0	0.748	8.4	0.453	7.9	5/16"	0.100	0.220	81.66
150-05	-	3/16"	56.0	2.205	20.0	0.787	9.9	0.390	9.5	3/8"	0.140	0.309	84.50
150-55	-	7/32"	56.0	2.205	20.0	0.787	9.9	0.390	9.5	3/8"	0.180	0.397	104.35
150-55-7/16	-	7/32"	61.0	2.406	25.0	0.984	11.5	0.453	11.1	7/16"	0.220	0.485	104.35
050-06-3/8	6 MM	-	56.0	2.205	20.0	0.787	9.9	0.390	9.5	3/8"	0.180	0.397	104.35
050-06	6 MM	-	61.0	2.406	25.0	0.984	11.5	0.453	11.1	7/16"	0.220	0.485	104.35
150-06	-	1/4"	65.9	2.594	28.0	1.102	13.1	0.516	12.7	1/2"	0.300	0.661	115.12
050-07	7 MM	9/32"	70.0	2.755	28.0	1.102	13.1	0.516	12.7	1/2"	0.340	0.750	134.40
050-08	8 MM	5/16"	72.0	2.835	28.0	1.102	13.1	0.516	12.7	1/2"	0.400	0.882	144.61
050-08-5/8	8 MM	5/16"	87.0	3.422	33.0	1.299	16.3	0.642	16.0	5/8"	0.600	1.323	154.82
050-10	10 MM	-	87.0	3.422	33.0	1.299	16.3	0.642	16.0	5/8"	0.680	1.499	192.25
150-10	-	3/8"	87.0	3.422	33.0	1.299	16.3	0.642	16.0	5/8"	0.660	1.455	192.25
050-12	12 MM	-	104.0	4.094	34.0	1.339	25.0	0.984	19.1	3/4"	0.680	1.499	511.28

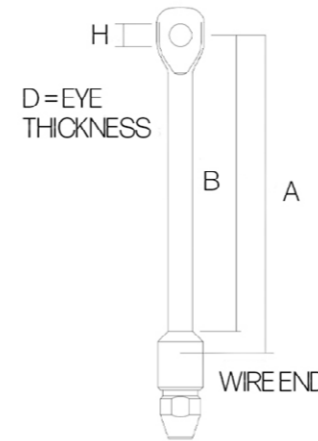
Sta-Lok Long Stud

- Manufactured from high specification 316 stainless steel
- No pre-measurement needed, self-fitted using simple hand tools
- The additional length of the long stud enables replacement of damaged & unseaworthy swages or seized turnbuckles without having to replace the wire rope



Sta-Lok Long Eye

- Sta-Lok Self-Fit Terminal, providing instant repair, anywhere
- Quick and easy to install by hand, using basic hand tools
- Packed for 1x19 wire as standard - Different wedges are available to terminate 7 strand & compacted strand wire ropes
- Wedges should be replaced when re-terminating

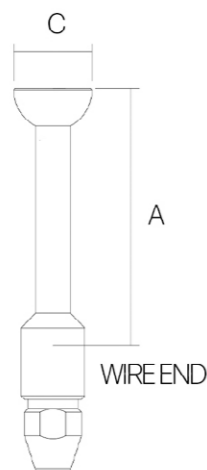


Reference	Wire Size (MM)	Wire Size (Inch)	Thread (UNF)	A (MM)	A (Inch)	B (MM)	B (Inch)	Weight (KG)	Weight (LB)	Price (\$)
076-04	4 MM	5/32"	5/16"	141.3	5.562	54.0	2.125	0.080	0.176	70.89
076-05-5/16	5 MM	-	5/16"	154.0	6.062	54.0	2.125	0.120	0.265	78.26
076-05	5 MM	-	3/8"	166.6	6.562	66.7	2.625	0.160	0.353	78.26
176-05-5/16	-	3/16"	5/16"	154.0	6.062	54.0	2.125	0.120	0.265	78.26
176-05	-	3/16"	3/8"	166.6	6.562	66.7	2.625	0.160	0.353	78.26
176-55	-	7/32"	3/8"	180.2	7.094	66.7	2.625	0.180	0.397	88.47
176-55-7/16	-	7/32"	7/16"	188.5	7.422	76.2	3.000	0.220	0.485	91.30
076-06-3/8	6 MM	-	3/8"	180.2	7.094	66.7	2.625	0.180	0.397	88.47
076-06	6 MM	-	7/16"	188.5	7.422	76.2	3.000	0.220	0.485	91.30
176-06-3/8	-	1/4"	3/8"	180.2	7.094	66.7	2.625	0.180	0.397	88.47
176-06	-	1/4"	7/16"	188.5	7.422	76.2	3.000	0.220	0.485	91.30
176-06-1/2	-	1/4"	1/2"	225.4	8.875	82.6	3.250	0.300	0.661	99.81
076-07	7 MM	9/32"	1/2"	225.4	8.875	82.6	3.250	0.380	0.838	130.43
076-08	8 MM	5/16"	1/2"	225.4	8.875	82.6	3.250	0.420	0.926	154.25
076-08-5/8	8 MM	5/16"	5/8"	271.5	10.687	95.2	3.750	0.600	1.323	187.68
076-10	10 MM	-	5/8"	272.3	10.719	95.2	3.750	0.700	1.543	199.62
176-10	-	3/8"	5/8"	272.3	10.719	95.2	3.750	0.700	1.543	199.62
176-11	-	7/16"	3/4"	339.7	13.375	115.1	4.531	1.300	2.866	435.50
076-12	12 MM	-	3/4"	339.7	13.375	115.1	4.531	1.300	2.866	435.50
176-12	-	1/2"	3/4"	339.7	13.375	115.1	4.531	1.300	2.866	435.50
076-14	14 MM	9/16"	7/8"	384.2	15.125	139.7	5.500	2.230	4.916	522.95
076-16	16 MM	5/8"	1"	442.0	17.041	139.7	5.500	2.850	6.283	635.47

Reference	Wire Size (MM)	Wire Size (Inch)	A (MM)	A (Inch)	B (MM)	B (Inch)	D (MM)	D (Inch)	H (MM)	H (Inch)	Weight (KG)	Weight (LB)	Price (\$)
078-05	5 MM	-	106.0	4.187	82.5	3.250	7.5	0.295	9.8	3/8"	0.120	0.265	86.77
178-05	-	3/16"	106.0	4.187	82.5	3.250	7.5	0.295	9.8	3/8"	0.120	0.265	86.77
178-55-3/8	-	7/32"	126.0	4.875	100.0	3.937	7.5	0.295	9.8	3/8"	0.200	0.441	98.68
178-55	-	7/32"	126.0	4.875	100.0	3.937	9.5	0.375	11.5	7/16"	0.200	0.441	98.68
078-06-3/8	6 MM	-	126.0	4.875	100.0	3.937	7.5	0.295	9.8	3/8"	0.200	0.441	98.68
078-06	6 MM	-	126.0	4.875	100.0	3.937	9.5	0.375	11.5	7/16"	0.200	0.441	98.68
078-06-1/2	6 MM	-	147.0	5.750	117.5	4.625	12.0	0.472	13.0	1/2"	0.260	0.573	111.15
178-06-3/8	-	1/4"	126.0	4.875	100.0	3.937	7.5	0.295	9.8	3/8"	0.200	0.441	98.68
178-06	-	1/4"	147.0	5.750	117.5	4.625	12.0	0.472	13.0	1/2"	0.260	0.573	111.15
078-07	7 MM	9/32"	147.0	5.781	117.5	4.625	12.0	0.472	13.0	1/2"	0.300	0.661	117.96
078-08	8 MM	5/16"	147.0	5.781	117.5	4.625	12.0	0.472	13.0	1/2"	0.360	0.794	132.13
078-08-5/8	8 MM	5/16"	175.0	6.889	136.4	5.369	13.5	0.531	16.0	5/8"	0.540	1.190	158.79
078-10	10 MM	-	175.0	6.889	136.4	5.369	13.5	0.531	16.0	5/8"	0.640	1.411	196.22
178-10	-	3/8"	175.0	6.889	136.4	5.369	13.5	0.531	16.0	5/8"	0.640	1.411	196.22
178-11	-	7/16"	254.0	10.000	205.8	8.102	19.0	0.748	19.5	3/4"	1.300	2.866	402.85
078-12	12 MM	-	254.0	10.000	205.8	8.102	19.0	0.748	19.5	3/4"	1.300	2.866	402.85
178-12	-	1/2"	254.0	10.000	205.8	8.102	19.0	0.748	19.5	3/4"	1.300	2.866	402.85
078-14	14 MM	9/16"	330.0	13.000	280.5	11.000	21.0	0.827	22.5	7/8"	2.100	4.630	507.79
078-16	16 MM	5/8"	320.0	12.600	303.6	11.955	24.0	0.945	25.6	1"	2.700	5.952	618.56

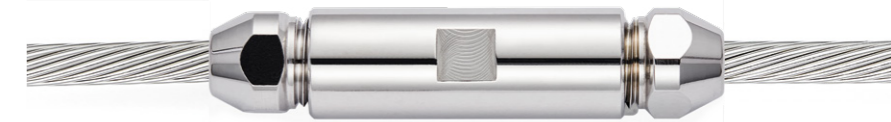
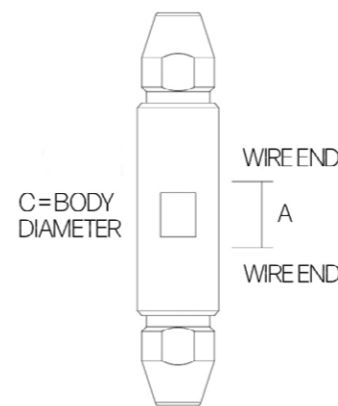
Sta-Lok Stemball

- Sta-Lok Self-Fit Terminal, the reusable alternative to swage
- Packed for 1x19 wire as standard - Different wedges are available to terminate 7 strand & compacted strand wire ropes
- Two part assembly - Threadlock recommended
- Can be used with Stemball Cup (page 68) to bring head size up to fit mast / spreader brackets



Sta-Lok Stay Connector

- Sta-Lok Self-Fit Terminal, providing instant repair, anywhere
- Joins two wires together
- Quick and easy to install by hand, using basic hand tools
- Packed for 1x19 wire as standard - Different wedges are available
- Wedges should be replaced when re-terminating



Reference	Wire Size (MM)	Wire Size (Inch)	A (MM)	A (Inch)	C (MM)	C (Inch)	Weight (KG)	Weight (LB)	Price (\$)
146-55	-	7/32"	96.0	3.779	21.2	0.835	0.180	0.397	108.32
046-06	6 MM	-	96.0	3.779	21.2	0.835	0.180	0.397	108.32
146-06	-	1/4"	96.0	3.779	21.2	0.835	0.200	0.441	126.81
046-07	7 MM	9/32"	110.0	4.330	21.6	0.850	0.280	0.617	138.37
046-08	8 MM	5/16"	125.0	4.921	26.5	1.043	0.380	0.838	154.25
046-10	10 MM	-	168.0	6.614	27.6	1.086	0.500	1.102	218.90
146-10	-	3/8"	168.0	6.614	27.6	1.086	0.500	1.102	218.90

Reference	Wire Size (MM)	Wire Size (Inch)	A (MM)	A (Inch)	C (MM)	C (Inch)	Weight (KG)	Weight (LB)	Price (\$)
072-04	4 MM	5/32"	11.1	0.437	14.3	0.562	0.060	0.132	90.23
072-05	5 MM	-	14.3	0.563	15.9	0.625	0.080	0.176	103.80
172-05	-	3/16"	14.3	0.563	15.9	0.625	0.080	0.176	103.80
172-55	-	7/32"	20.6	0.812	19.1	0.750	0.160	0.353	121.36
072-06	6 MM	-	20.6	0.812	19.1	0.750	0.160	0.353	121.36
172-06	-	1/4"	20.6	0.812	19.1	0.750	0.160	0.353	121.36
072-07	7 MM	9/32"	19.1	0.750	22.2	0.875	0.240	0.529	137.24
072-08	8 MM	5/16"	19.1	0.750	25.4	1.000	0.300	0.661	151.98
072-10	10 MM	-	24.0	0.937	28.6	1.125	0.420	0.926	214.36
172-10	-	3/8"	24.0	0.937	28.6	1.125	0.420	0.926	214.36
172-11	-	7/16"	25.4	1.000	34.9	1.375	0.900	1.984	379.53
072-12	12 MM	-	25.4	1.000	34.9	1.375	0.900	1.984	379.53
172-12	-	1/2"	25.4	1.000	34.9	1.375	0.900	1.984	379.53

Sta-Lok 1x19 Wedge

- Must be replaced where Sta-Lok terminals are being re-used
- Must not be used for Dyform, compacted or 7 strand wire ropes
- Individual wedges are laser marked for easy identification



Reference	Wire Size (MM)	Wire Size (Inch)	Pack (Qty)	Weight per pack (KG)	Weight per pack (LB)	Price (\$)
126-03	3 MM	1/8"	5	0.006	0.013	28.36
126-04	4 MM	5/32"	5	0.010	0.022	40.26
126-05	5 MM	-	5	0.015	0.033	41.40
138-05	-	3/16"	5	0.016	0.035	41.40
138-55	-	7/32"	5	0.034	0.075	48.20
126-06	6 MM	-	5	0.150	0.331	48.20
138-06	-	1/4"	5	0.151	0.333	48.20
126-07	7 MM	9/32"	5	0.195	0.430	55.58
126-08	8 MM	5/16"	2	0.054	0.119	28.36
126-10	10 MM	-	2	0.096	0.212	39.13
138-10	-	3/8"	2	0.097	0.214	39.13
138-11	-	7/16"	1	0.048	0.106	27.40
126-12	12 MM	-	1	0.042	0.093	27.40
138-12	-	1/2"	1	0.043	0.095	27.40
126-14	14 MM	9/16"	1	0.069	0.152	47.81
126-16	16 MM	5/8"	1	0.110	0.243	55.39
126-19	19 MM	3/4"	1	0.180	0.397	193.22
126-22	22 MM	7/8"	1	0.260	0.573	209.39
126-26	26 MM	1"	1	0.380	0.838	218.30

Sta-Lok 7 Strand

- Must be replaced where Sta-Lok terminals are being re-used
- For use with 7x7 and 7x19 stainless steel wire construction only
- Laser marked for easy identification



Reference	Wire Size (MM)	Wire Size (Inch)	Pack (Qty)	Weight per pack (KG)	Weight per pack (LB)	Price (\$)
127-03	3 MM	1/8"	5	0.004	0.009	42.53
127-04	4 MM	5/32"	5	0.008	0.018	49.90
127-05	5 MM	-	5	0.013	0.029	56.14
139-05	-	3/16"	5	0.013	0.029	56.14
127-06	6 MM	-	5	0.029	0.064	59.55
139-06	-	1/4"	5	0.029	0.064	59.55
127-07	7 MM	9/32"	5	0.017	0.037	59.55
127-08	8 MM	5/16"	2	0.024	0.053	32.89
127-10	10 MM	-	2	0.042	0.093	44.80
139-10	-	3/8"	2	0.020	0.044	44.80
127-12	12 MM	-	1	0.040	0.088	47.22
139-12	-	1/2"	1	0.040	0.040	47.22
127-14	14 MM	9/16"	1	0.069	0.152	53.23
127-16	16 MM	5/8"	1	0.101	0.223	70.71

Sta-Lok Dyform & Compacted Wedges

- Compacted strand and Dyform wire ropes provide higher breaking loads and lower stretch than conventional 1 x 19 wire
- There are 5 different constructions (1x7), (1x19), (1x25), (1x31) and (1x36)
- For use only with Compacted Strand or Dyform wire rope (see table below)



Reference	Wire Size (MM)	Construction	Compacted Strand	Dyform	Pack (Qty)	Weight per pack (KG)	Weight per pack (LB)	Price (\$)
154-03C	3 MM	1x7	Yes	No	5	0.005	0.011	28.36
154-04	4 MM	1x7	Yes	Yes	5	0.005	0.011	45.94
154-05	5 MM	1x19	Yes	Yes	5	0.010	0.022	48.77
154-06	6 MM	1x19	No	Yes	5	0.025	0.055	55.01
154-06C	6 MM	1x19	Yes	No	5	0.022	0.049	55.01
154-07	7 MM	1x19	No	Yes	5	0.028	0.062	64.08
154-07C	7 MM	1x19	Yes	No	5	0.025	0.055	64.08
154-08	8 MM	1x19	Yes	Yes	2	0.017	0.037	32.89
154-10	10 MM	1x19	Yes	Yes	2	0.033	0.073	44.80
154-12	12 MM	1x19	No	Yes	1	0.033	0.073	30.90
154-12C19	12 MM	1x19	Yes	No	1	0.030	0.066	30.90
154-14C19	14 MM	1x19	Yes	No	1	0.056	0.123	54.80
154-14	14 MM	1x25	Yes	Yes	1	0.060	0.132	54.80
154-14C36	14 MM	1x36	Yes	No	1	0.060	0.132	54.80
154-16	16 MM	1x25	No	Yes	1	0.110	0.243	62.96
154-16C25	16 MM	1x25	Yes	No	1	0.110	0.243	62.96
154-16C	16 MM	1x36	Yes	No	1	0.110	0.243	62.96
154-19C25	19 MM	1x25	Yes	No	1	0.140	0.309	193.23
154-19	19 MM	1x31	No	Yes	1	0.140	0.309	193.23
154-19C36	19 MM	1x36	Yes	No	1	0.140	0.309	193.23

Sta-Lok Former

- Recommended to replace where Sta-Lok Self-Fit terminals are being re-used
- Manufactured from stainless steel
- Also available as part of Socket, Wedge & Former Kit



Reference	Wire Size (MM)	Wire Size (Inch)	Pack (Qty)	Weight per pack (KG)	Weight per pack (LB)	Price (\$)
115-03	3 MM	1/8"	5	0.005	0.011	19.28
115-04	4 MM	5/32"	5	0.005	0.011	19.28
115-05	5 MM	3/16"	5	0.010	0.022	22.68
115-06	6 MM	7/32" & 1/4"	5	0.020	0.044	23.82
115-07	7 MM	9/32"	5	0.025	0.055	28.36
115-08	8 MM	5/16"	2	0.012	0.026	14.18
115-10	10 MM	3/8"	2	0.018	0.040	18.15
115-12	12 MM	7/16" & 1/2"	1	0.020	0.044	20.99
115-14	14 MM	9/16"	1	0.043	0.095	33.81
115-16	16 MM	5/8"	1	0.063	0.139	40.81
115-19	19 MM	3/4"	1	0.121	0.267	179.45
115-22	22 MM	7/8"	1	0.158	0.348	188.89
115-26	26 MM	1"	1	0.198	0.437	218.58

Sta-Lok Socket, Wedge & Former Kit

- Recommended where Sta-Lok terminals are being re-used
- Packed for 1×19 wire as standard
- Different wedges are available to terminate 7 strand & compacted strand wire ropes



Reference	Wire Size (MM)	Wire Size (Inch)	Weight (KG)	Weight (LB)	Price (\$)
208-04	4 MM	5/32"	0.020	0.044	33.46
208-05	5 MM	-	0.021	0.046	37.43
211-05	-	3/16"	0.024	0.053	37.43
211-55	-	7/32"	0.015	0.033	41.97
208-06	6 MM	-	0.040	0.088	41.97
211-06	-	1/4"	0.040	0.088	41.97
208-07	7 MM	9/32"	0.060	0.132	49.90
227-07*	7 MM	9/32"	0.058	0.128	49.90
208-08	8 MM	5/16"	0.074	0.163	51.61
208-10	10 MM	-	0.116	0.256	71.45
211-10	-	3/8"	0.116	0.256	71.45
211-11	-	7/16"	0.116	0.256	131.18
211-12	-	1/2"	0.216	0.476	131.18
208-12	12 MM	-	0.217	0.478	131.18
208-14	14 MM	9/16"	0.500	1.102	200.55
208-16	16 MM	5/8"	0.660	1.455	267.01
208-19	19 MM	3/4"	1.320	2.910	495.55
208-22	22 MM	7/8"	1.700	3.748	605.15
208-26	26 MM	1"	2.260	4.980	777.72

*227-07 is a special Terminal Part for Insulators only.



Sta-Lok Insulators



Insulators are designed to insulate a section of the boat rigging, turning it into an aerial and the ideal antenna for radio transmission and reception.

Sta-Lok Insulators have proven themselves over the years to be an effective and totally reliable method of converting yacht backstays into radio antenna. Backstays are used as it is the longest single length of wire on the boat.

Industry guidance is that the wire between insulators should be a minimum of 7 meters, with the first insulator situated above head height to avoid touching while transmitting.

The main body of the Sta-Lok Insulator consists of an ingenious stainless steel assembly which is embedded in a black weather-proof nylon moulding, designed to exceed the breaking load of the backstay.

Electrical Properties

Impedance Measurement @15MHz, Capacitance 16pF Resistance 400K, D.C.Leakage Resistance @ 30Kv, Greater than 10 G Ohms.

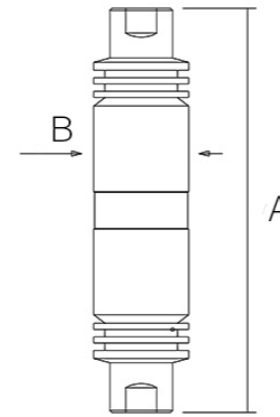
Voltage Proof Test - Withstands 30 Kv applied for 2 hours without breakdown. No change in 15 MHz impedance after voltage proof test.

Please note:

1. Insulators should not be used with hydraulic backstay adjusters.
2. Yacht rigging and Insulators should be inspected, checked and maintained regularly.

Insulator Body

- Main body of the Sta-Lok Insulator
- Variety of end fittings available

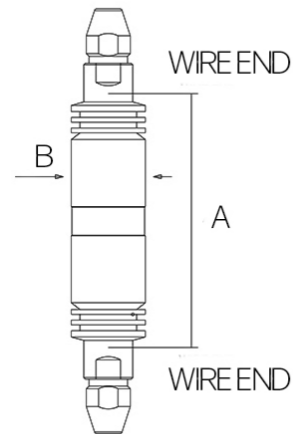


Reference	Wire Size (MM)	Wire Size (Inch)	A (MM)	A (Inch)	B (MM)	B (Inch)	Weight (KG)	Weight (LB)	Price (\$)
206-06	6 MM	7/32" & 1/4"	152.0	6.000	35.0	1.375	0.370	0.816	226.27
206-08	7 MM & 8 MM	9/32" & 5/16"	164.0	6.500	38.0	1.500	0.474	1.045	262.57
206-10	10 MM	3/8"	175.0	6.875	41.0	1.625	0.605	1.334	332.32
206-12	12 MM	7/16" & 1/2"	215.0	8.500	52.0	2.000	1.700	3.748	390.61

Insulators achieve 90% of rated breaking load on compacted strand wire rope.

Insulator Terminal to Terminal

- Use on standing rigging to provide radio antenna
- Incorporates Sta-Lok Self fit termination
- Packed for 1x19 wire as standard
- Different wedges are available to terminate 7 strand and compacted strand wire ropes

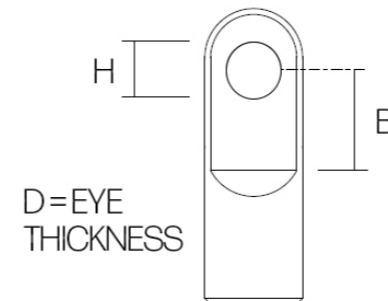


Reference	Wire Size (MM)	Wire Size (Inch)	A (MM)	A (Inch)	B (MM)	B (Inch)	Weight (KG)	Weight (LB)	Price (\$)
143-55	-	7/32"	114.0	4.488	35.0	1.375	0.459	1.012	301.13
043-06	6 MM	-	114.0	4.488	35.0	1.375	0.459	1.012	301.13
143-06	-	1/4"	114.0	4.488	35.0	1.375	0.459	1.012	301.13
043-07	7 MM	9/32"	112.0	4.409	38.0	1.500	0.625	1.378	349.33
043-08	8 MM	5/16"	112.0	4.409	38.0	1.500	0.626	1.380	363.51
043-10	10 MM	-	121.0	4.764	41.0	1.625	0.851	1.876	482.60
143-10	-	3/8"	121.0	4.764	41.0	1.625	0.851	1.876	482.60
143-11	-	7/16"	149.0	5.866	52.0	2.000	2.100	4.630	742.16
043-12	12 MM	-	149.0	5.866	52.0	2.000	2.100	4.630	742.16
143-12	-	1/2"	149.0	5.866	52.0	2.000	2.100	4.630	742.16

Insulators achieve 90% of rated breaking load on compacted strand wire rope.

Insulator Eye Kit

- Eye Part for Insulators
- Includes adaptor screw for assembly into insulator body
- Thread lock is recommended to use with this product



Reference	Body Reference	B (MM)	B (Inch)	D (MM)	D (Inch)	H (MM)	H (Inch)	Weight (KG)	Weight (LB)	Price (\$)
20907-55	206-06	23.0	0.940	9.5	0.375	11.5	7/16"	0.137	0.302	75.54
20907-06	206-06	22.2	0.875	9.5	0.375	13.0	1/2"	0.137	0.302	75.42
20907-07	206-08	24.6	0.969	10.5	0.413	13.0	1/2"	0.179	0.395	89.60
20907-08	206-08	27.0	1.062	12.0	0.472	13.0	1/2"	0.156	0.344	99.24
20907-08-5/8	206-08	27.0	1.062	13.5	0.531	16.0	5/8"	0.276	0.608	149.71
20907-10	206-10	29.2	1.150	13.5	0.531	16.0	5/8"	0.336	0.741	159.92
20907-12	206-12	33.3	1.312	19.0	0.748	19.5	3/4"	0.486	1.071	205.80

Sta-Lok Swage Terminals



Our stainless steel swage terminals have been designed for use with 1×19, 7×19, 7×7 and compacted strand stainless steel wire rope and can be installed using both rotary & fixed die swaging machines.

Designed with 10 x D hole depths for greater grip and high breaking loads.

Manufactured from 316 stainless steel. All swage terminals are machined to close tolerances to ensure accurate termination.

We have developed a wide selection of products to suit all masts, spreaders and chainplates for metric and inch wire rope from 3mm (1/8") to 26mm (1").

Sta-Lok Swage fittings require professional swaging onto wire rope and are not designed for hand crimping.

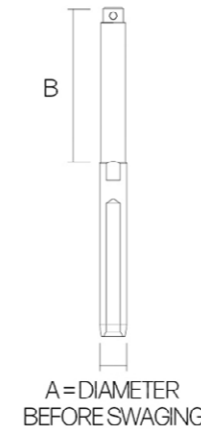
Please note:

1. Sta-Lok Swage Terminals have been designed for use with stainless steel wire ropes. They should not be used with Galvanized wire ropes because galvanic action will cause the wire rope to corrode and fail.

2. Sta-Lok Swage Terminals are not suitable for use with fibre ropes or wires with fibre cores.

Many elements, including usage, environment and standard of maintenance can affect the lifetime of your rigging. All fittings should be inspected, checked and maintained regularly.

Swage Stud Open Body



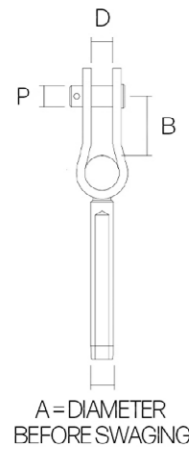
- Suitable for Metric and Inch 1×19, 7 Strand and Compacted Strand wire rope (IWRC)
- Suitable for use with rotary & fixed die swaging machines
- Minimum hole depth 10x wire diameter
- Right hand thread only - Can be used with both open and closed body turnbuckles
- Supplied with split pin



Reference	Wire Size (MM)	Wire Size (Inch)	Thread (UNF)	A (MM)	A (Inch)	B (MM)	B (Inch)	Weight (KG)	Weight (LB)	Price (\$)
051-03	3 MM	1/8"	1/4"	6.2	0.245	56.0	2.204	0.020	0.044	12.48
051-04-1/4	4 MM	5/32"	1/4"	7.4	0.292	56.0	2.204	0.020	0.044	13.04
051-04	4 MM	5/32"	5/16"	7.4	0.292	60.0	2.362	0.040	0.088	13.04
051-05-5/16	5 MM	3/16"	5/16"	9.0	0.354	60.0	2.362	0.040	0.088	17.58
051-05	5 MM	3/16"	3/8"	9.0	0.354	67.0	2.625	0.060	0.132	17.58
151-55	-	7/32"	3/8"	10.7	0.422	67.0	2.625	0.070	0.154	26.09
151-55-7/16	-	7/32"	7/16"	10.7	0.422	75.0	2.953	0.080	0.176	26.09
051-06-3/8	6 MM	-	3/8"	12.4	0.489	67.0	2.625	0.080	0.176	26.09
051-06	6 MM	-	7/16"	12.4	0.489	75.0	2.953	0.100	0.220	26.09
151-06-3/8	-	1/4"	3/8"	12.5	0.494	67.0	2.625	0.100	0.220	26.09
151-06	-	1/4"	7/16"	12.5	0.494	75.0	2.953	0.100	0.220	27.22
151-06-1/2	-	1/4"	1/2"	12.5	0.494	81.0	3.187	0.140	0.309	27.22
051-07-7/16	7 MM	9/32"	7/16"	14.2	0.558	75.0	2.953	0.140	0.309	37.43
051-07	7 MM	9/32"	1/2"	14.2	0.558	81.0	3.187	0.160	0.353	37.43
051-08	8 MM	5/16"	1/2"	16.1	0.630	81.0	3.187	0.180	0.397	44.23
051-08-5/8	8 MM	5/16"	5/8"	16.1	0.630	100.0	3.937	0.260	0.573	47.64
051-10	10 MM	-	5/8"	17.7	0.698	100.0	3.937	0.300	0.661	58.98
151-10	-	3/8"	5/8"	17.7	0.698	100.0	3.937	0.300	0.661	58.98
151-11	-	7/16"	3/4"	19.6	0.776	124.0	4.875	0.540	1.190	116.60
051-12	12 MM	-	3/4"	21.3	0.839	124.0	4.875	0.540	1.190	116.60
051-12-7/8	12 MM	-	7/8"	21.3	0.839	140.0	5.511	0.680	1.499	222.71
151-12	-	1/2"	3/4"	21.3	0.839	124.0	4.875	0.540	1.190	116.60
051-14	14 MM	9/16"	7/8"	24.9	0.979	140.0	5.511	0.900	1.984	222.71
051-16	16 MM	5/8"	1"	28.0	1.104	162.0	6.375	1.260	2.778	268.18
051-19	19 MM	3/4"	1 1/8"	34.4	1.354	184.0	7.250	2.100	4.630	364.96
051-22	22 MM	7/8"	1 1/4"	40.3	1.588	215.0	8.464	3.220	7.099	524.70
051-26	26 MM	1"	1 3/8"	45.8	1.807	220.0	8.656	4.000	8.818	685.61

Swage Toggle Fork

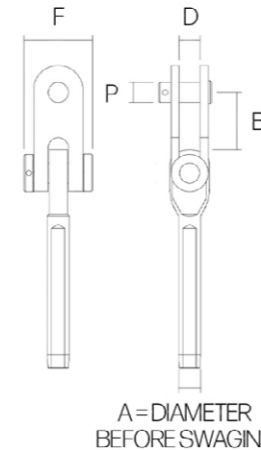
- Suitable for use with rotary & fixed die swaging machine
- Manufactured from high specification 316 stainless steel
- Use with Metric and Inch 1×19, 7 Strand and Compacted Strand wire rope (IWRC)
- Minimum hole depth 10x wire diameter
- Unique toggle action for articulation in two planes



Reference	Wire Size (MM)	Wire Size (Inch)	A (MM)	A (Inch)	B (MM)	B (Inch)	D (MM)	D (Inch)	P (MM)	P (Inch)	Weight (KG)	Weight (LB)	Price (\$)
038-03	3 MM	1/8"	6.2	0.245	14.4	0.567	6.4	0.252	6.4	1/4"	0.040	0.088	20.98
038-04	4 MM	5/32"	7.4	0.292	19.0	0.750	8.4	0.331	7.9	5/16"	0.060	0.132	23.25
038-05	5 MM	3/16"	9.0	0.354	20.0	0.787	9.9	0.390	9.5	3/8"	0.100	0.220	32.32
132-55	-	7/32"	10.7	0.422	25.0	0.984	11.5	0.453	11.1	7/16"	0.200	0.441	46.50
038-06	6 MM	-	12.4	0.439	25.0	0.984	11.5	0.453	11.1	7/16"	0.200	0.441	46.50
132-06	-	1/4"	12.5	0.494	28.0	1.102	13.1	0.516	12.7	1/2"	0.250	0.551	58.98
038-07	7 MM	9/32"	14.2	0.558	28.0	1.102	13.1	0.516	12.7	1/2"	0.280	0.617	65.78
038-08	8 MM	5/16"	16.1	0.630	28.0	1.102	13.1	0.516	12.7	1/2"	0.320	0.705	72.59
038-08-5/8	8 MM	5/16"	16.1	0.630	33.0	1.299	16.3	0.642	16.0	5/8"	0.500	1.103	93.57
038-10	10 MM	-	17.7	0.698	33.0	1.299	16.3	0.642	16.0	5/8"	0.560	1.235	106.05
132-10	-	3/8"	17.7	0.698	33.0	1.299	16.3	0.642	16.0	5/8"	0.560	1.235	106.05
132-11	-	7/16"	19.6	0.776	34.0	1.339	19.1	0.752	18.5	3/4"	1.140	2.513	298.99
038-12	12 MM	-	21.3	0.839	34.0	1.339	19.1	0.752	18.5	3/4"	1.140	2.513	298.99
132-12	-	1/2"	21.3	0.839	34.0	1.339	19.1	0.752	18.5	3/4"	1.140	2.513	298.99

Swage Eye Toggle Fork

- Suitable for use with rotary & fixed die swaging machine
- Manufactured from high specification 316 stainless steel
- Use with Metric and Inch 1×19, 7 Strand and Compacted Strand wire rope (IWRC)
- Minimum hole depth 10x wire diameter
- Modular system
- Unique toggle action for articulation in two planes



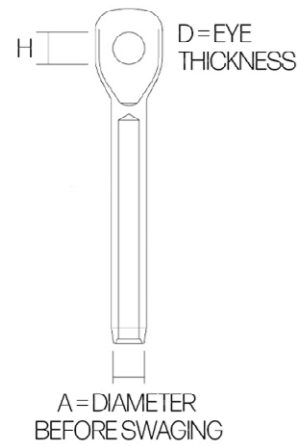
Ref	Wire Size (MM)	Wire Size (Inch)	A (MM)	A (Inch)	B (MM)	B (Inch)	D (MM)	D (Inch)	F (MM)	F (Inch)	P (MM)	P (Inch)	Weight (KG)	Weight (LB)	Price (\$)
132 ET-11	-	7/16"	19.6	0.776	56.0	2.205	20.0	0.787	66.0	2.598	18.5	3/4"	1.420	3.131	243.69
038 ET-12-16	12 MM	-	21.3	0.839	57.4	2.26	20.0	0.787	66.0	2.598	16.0	0.630	1.420	3.131	253.02
038 ET-12	12 MM	-	21.3	0.839	56.0	2.205	20.0	0.787	66.0	2.598	18.5	3/4"	1.420	3.131	253.02
132 ET-12	-	1/2"	21.3	0.839	56.0	2.205	20.0	0.787	66.0	2.598	18.5	3/4"	1.420	3.131	253.02
038 ET-14-20	14 MM	9/16"	24.9	0.979	64.0	2.520	25.0	0.984	78.0	3.071	20.0	0.787	2.160	4.762	373.70
038 ET-14	14 MM	9/16"	24.9	0.979	63.0	2.480	25.0	0.984	78.0	3.071	21.5	7/8"	2.160	4.762	373.70
038 ET-16-22	16 MM	5/8"	28.0	1.104	69.4	2.732	28.0	1.102	82.0	3.228	22.0	0.866	3.080	6.790	532.86
038 ET-16	16 MM	5/8"	28.0	1.104	67.5	2.657	28.0	1.102	82.0	3.228	25.0	1"	3.080	6.790	532.86
038 ET-19	19 MM	3/4"	34.4	1.354	70.0	2.756	31.5	1.240	89.0	3.504	28.2	1 1/8"	4.700	10.362	975.36
038 ET-22	22 MM	7/8"	40.3	1.588	79.0	3.110	35.0	1.378	98.0	3.858	31.5	1 1/4"	6.800	14.991	1131.60
038 ET-26	26 MM	1"	45.8	1.807	98.0	3.858	38.0	1.496	110.0	4.331	34.6	1 3/8"	9.500	20.944	1660.38



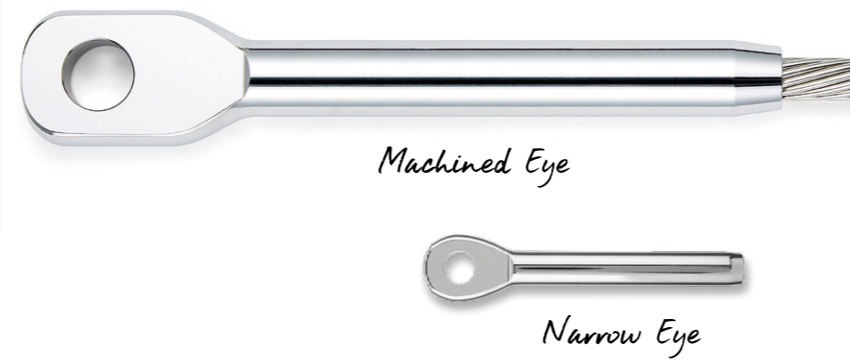
New Products Added

Sta-Lok now supply downsized pin variations on our 12mm, 14mm and 16mm Swage Eye Toggles.

Swage Eyes

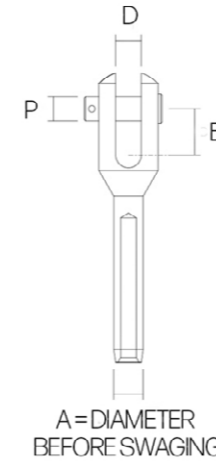


- Suitable for use with rotary & fixed die swaging machine
- Manufactured from high specification 316 stainless steel
- Use with Metric and Inch 1×19, 7 Strand and Compacted Strand wire rope (IWRC)
- Minimum hole depth 10x wire diameter
- Available in 3 different styles, Narrow, Forged and Machined



Reference	Wire Size (MM)	Wire Size (Inch)	A (MM)	A (Inch)	D (MM)	D (Inch)	H (MM)	H (Inch)	Weight (KG)	Weight (LB)	Price (\$)
Narrow Eyes											
039N-03	3 MM	1/8"	6.2	0.245	4.0	0.157	6.5	1/4"	0.014	0.031	12.50
039N-04	4 MM	5/32"	7.4	0.292	5.0	0.197	8.5	5/16"	0.022	0.049	12.71
039N-05	5 MM	3/16"	9.0	0.354	6.0	0.236	10.0	3/8"	0.040	0.088	21.14
130N-55	-	7/32"	10.7	0.422	8.0	0.315	11.5	7/16"	0.100	0.220	28.02
039N-06	6 MM	-	12.4	0.488	8.0	0.315	11.5	7/16"	0.100	0.220	26.82
130N-06	-	1/4"	12.5	0.494	8.0	0.315	13.0	1/2"	0.100	0.220	41.88
039N-07	7 MM	9/32"	14.2	0.558	9.0	0.354	13.0	1/2"	0.120	0.265	30.57
039N-08	8 MM	5/16"	16.1	0.630	10.0	0.394	13.0	1/2"	0.180	0.397	46.77
039N-08-5/8	8 MM	5/16"	16.1	0.630	12.0	0.472	16.5	5/8"	0.240	0.529	55.05
039N-10	10 MM	-	17.7	0.698	11.0	0.433	16.2	5/8"	0.260	0.573	73.34
130N-10	-	3/8"	17.7	0.698	11.0	0.433	16.0	5/8"	0.240	0.529	73.34
Machined Eyes											
130-11	-	7/16"	19.6	0.773	18.0	0.709	19.5	3/4"	0.520	1.146	146.62
039-12	12 MM	-	21.4	0.842	18.0	0.709	19.5	3/4"	0.520	1.146	160.33
130-12	-	1/2"	21.3	0.839	18.0	0.709	19.5	3/4"	0.520	1.146	160.33
039-14	14 MM	9/16"	25.0	0.979	21.0	0.827	22.5	7/8"	0.800	1.764	276.93
039-16	16 MM	5/8"	28.2	1.104	24.4	0.961	25.7	1"	1.180	2.601	317.74
039-19	19 MM	3/4"	34.5	1.354	27.5	1.083	28.6	1 1/8"	1.900	4.189	612.15
039-22	22 MM	7/8"	40.3	1.588	32.0	1.260	32.0	1 1/4"	2.800	6.173	769.56
039-26	26 MM	1"	45.8	1.807	34.0	1.339	35.0	1 3/8"	3.950	8.708	991.10

Swage Fork



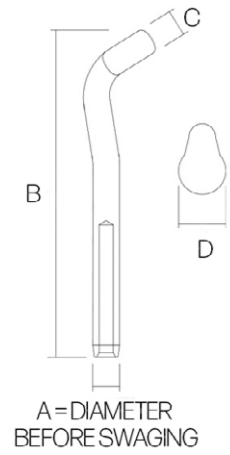
- Suitable for use with rotary & fixed die swaging machine
- Manufactured from high specification 316 stainless steel
- Use with Metric and Inch 1×19, 7 Strand and Compacted Strand wire rope (IWRC)
- Minimum hole depth 10x wire diameter
- Designed to suit most mast chain plates and fixing points



Reference	Wire Size (MM)	Wire Size (Inch)	A (MM)	A (Inch)	B (MM)	B (Inch)	D (MM)	D (Inch)	P (MM)	P (Inch)	Weight (KG)	Weight (LB)	Price (\$)
035-03	3 MM	1/8"	6.2	0.245	10.0	0.393	6.4	0.252	6.2	1/4"	0.020	0.044	24.95
035-04	4 MM	5/32"	7.4	0.292	14.7	0.580	7.9	0.311	7.7	5/16"	0.060	0.132	27.79
035-05	5 MM	3/16"	9.0	0.354	17.5	0.687	9.5	0.374	9.3	3/8"	0.100	0.220	44.80
135-55	-	7/32"	10.7	0.422	19.0	0.748	11.1	0.437	10.9	7/16"	0.160	0.353	58.41
035-06	6 MM	-	12.4	0.489	19.0	0.748	11.1	0.437	10.9	7/16"	0.160	0.353	58.41
135-06	-	1/4"	12.5	0.494	19.0	0.748	11.1	0.437	10.9	7/16"	0.160	0.353	58.41
035-07	7 MM	9/32"	14.2	0.558	25.1	0.990	11.1	0.437	10.9	7/16"	0.200	0.441	83.36
035-08	8 MM	5/16"	16.1	0.630	25.1	0.990	12.7	0.500	12.6	1/2"	0.340	0.750	87.90
035-10	10 MM	-	17.7	0.698	29.4	1.155	15.9	0.625	15.6	5/8"	0.560	1.235	141.21
135-10	-	3/8"	17.7	0.698	29.4	1.155	15.9	0.625	15.6	5/8"	0.560	1.235	141.21
135-11	-	7/16"	19.6	0.716	33.3	1.312	19.1	0.750	18.5	3/4"	0.900	1.984	385.95
035-12	12 MM	-	21.3	0.839	33.3	1.312	19.1	0.750	18.5	3/4"	0.900	1.984	385.95
135-12	-	1/2"	21.3	0.839	33.3	1.312	19.1	0.750	18.5	3/4"	0.900	1.984	385.95
035-14	14 MM	9/16"	24.9	0.979	38.1	1.500	22.2	0.875	21.5	7/8"	1.600	3.527	545.69
035-16	16 MM	5/8"	28.0	1.104	40.0	1.576	25.4	1.000	25.0	1"	1.700	3.748	665.79
035-19	19 MM	3/4"	34.4	1.354	50.0	1.970	28.6	1.125	28.2	1 1/8"	2.500	5.512	857.59
035-22	22 MM	7/8"	40.3	1.588	60.3	2.375	31.8	1.250	31.5	1 1/4"	3.620	7.981	1,340.90
035-26	26 MM	1"	45.8	1.807	60.3	2.375	35.0	1.375	34.6	1 3/8"	5.000	11.023	1,781.07

Swage Shroud

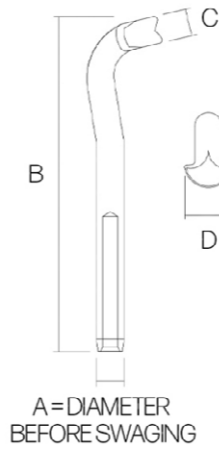
- Suitable for use with rotary & fixed die swaging machine
- Use with Metric and Inch 1x19, 7 Strand and Compacted Strand wire rope (IWRC)
- Minimum hole depth 10x wire diameter
- Fits N840 backing plates



Reference	Wire Size (MM)	Wire Size (Inch)	A (MM)	A (Inch)	B (MM)	B (Inch)	C (MM)	C (Inch)	D (MM)	D (Inch)	Weight (KG)	Weight (LB)	Price (\$)
045-04	4 MM	5/32"	7.4	0.292	88.2	3.474	7.5	0.295	16.0	0.630	0.040	0.088	36.69
045-05	5 MM	3/16"	9.0	0.354	103.8	4.089	9.1	0.358	19.0	0.748	0.060	0.132	41.87
045-06	6 MM	-	12.4	0.488	130.0	5.118	12.5	0.492	22.0	0.866	0.140	0.309	50.15
145-06	-	1/4"	12.5	0.494	130.0	5.118	12.5	0.492	22.0	0.866	0.140	0.309	50.15
045-07	7 MM	9/32"	14.2	0.558	149.0	5.866	14.3	0.563	28.0	1.102	0.200	0.441	70.57
045-08	8 MM	5/16"	16.1	0.630	168.0	6.614	16.0	0.629	30.0	1.181	0.280	0.617	104.85
045-10	10 MM	-	17.7	0.698	197.0	7.756	17.8	0.700	32.0	1.260	0.380	0.838	126.57
145-10	-	3/8"	17.7	0.698	197.0	7.756	17.8	0.700	32.0	1.260	0.380	0.838	126.57
045-12	12 MM	-	21.4	0.842	241.0	9.488	21.4	0.842	38.0	1.496	0.660	1.455	241.95
145-12	-	1/2"	21.3	0.839	241.0	9.488	21.4	0.842	38.0	1.496	0.660	1.455	241.95

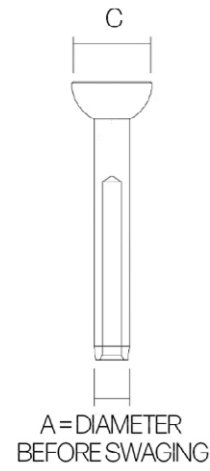
Swage T

- Suitable for use with rotary & fixed die swaging machine
- Manufactured from high specification 316 stainless steel
- Use with Metric and Inch 1x19, 7 Strand and Compacted Strand wire rope (IWRC)
- Minimum hole depth 10x wire diameter



Reference	Wire Size (MM)	Wire Size (Inch)	A (MM)	A (Inch)	B (MM)	B (Inch)	C (MM)	C (Inch)	D (MM)	D (Inch)	Weight (KG)	Weight (LB)	Price (\$)
044-03	3 MM	-	6.3	0.248	86.0	3.386	6.3	0.248	13.5	0.531	0.025	0.055	26.82
044-04	4 MM	5/32"	7.5	0.295	101.0	3.976	7.5	0.295	16.5	0.650	0.040	0.088	23.23
044-05	5 MM	3/16"	9.0	0.354	112.0	4.409	9.0	0.354	18.5	0.728	0.060	0.132	27.35
044-06	6 MM	-	12.5	0.492	136.0	5.354	12.6	0.496	27.7	1.089	0.140	0.309	35.36
144-06	-	1/4"	12.5	0.492	136.0	5.354	12.6	0.496	27.7	1.089	0.140	0.309	50.11
044-07	7 MM	9/32"	14.2	0.559	148.0	5.826	14.0	0.551	30.0	1.180	0.180	0.397	48.08
044-08	8 MM	5/16"	16.0	0.630	184.0	7.244	16.0	0.630	33.5	1.319	0.300	0.661	67.24
044-10	10 MM	-	17.8	0.701	214.0	8.425	17.8	0.701	36.4	1.434	0.420	0.926	153.91
144-10	-	3/8"	17.8	0.701	214.0	8.425	17.8	0.701	36.4	1.434	0.420	0.926	187.98

Swage Stemball



- Suitable for use with rotary & fixed die swaging machine
- Manufactured from high specification 316 stainless steel
- Use with 1x19, 7 Strand and Compacted Strand wire rope (IWRC)
- Minimum hole depth 10x wire diameter
- Metric and Inch wire ropes
- Can be used with Stemball Cup (page 68) to bring head size up to fit mast / spreader brackets

Reference	Wire Size (MM)	Wire Size (Inch)	A (MM)	A (Inch)	C (MM)	C (Inch)	Weight (KG)	Weight (LB)	Price (\$)
042-04	4 MM	5/32"	7.4	0.292	14.6	0.574	0.020	0.044	14.74
042-05Z	5 MM	3/16"	9.0	0.354	14.6	0.574	0.040	0.088	16.45
042-05	5 MM	3/16"	9.0	0.354	18.3	0.720	0.040	0.088	18.15
142-55	-	7/32"	10.7	0.422	21.2	0.835	0.080	0.176	21.55
042-06	6 MM	-	12.4	0.489	21.2	0.835	0.080	0.176	21.55
142-06	-	1/4"	12.5	0.494	21.2	0.835	0.080	0.176	21.55
042-07	7 MM	9/32"	14.2	0.558	21.6	0.850	0.120	0.265	32.89
042-07Z	7 MM	9/32"	14.2	0.558	26.5	1.043	0.130	0.287	36.29
042-08	8 MM	5/16"	16.1	0.630	26.5	1.043	0.140	0.309	43.67
042-10	10 MM	-	17.7	0.698	27.6	1.086	0.240	0.529	70.32
142-10	-	3/8"	17.7	0.698	27.6	1.086	0.240	0.529	70.32
142-11	-	7/16"	19.6	0.776	33.1	1.303	0.340	0.750	118.93
042-12E*	12 MM	-	20.0	0.787	27.9	1.098	0.310	0.683	118.93
042-12	12 MM	-	21.3	0.839	33.1	1.303	0.400	0.882	118.93
142-12	-	1/2"	21.3	0.839	33.1	1.303	0.400	0.882	118.93
042-14	14 MM	9/16"	24.9	0.979	31.8	1.250	0.560	1.235	354.46
042-16	16 MM	5/8"	28.0	1.104	39.4	1.553	0.860	1.896	425.59
042-19	19 MM	3/4"	34.4	1.354	54.0	2.126	1.920	4.233	892.57

*Must be swaged with 12E die only.



Sta-Lok Bronze Turnbuckles



Our ever-popular Sta-Lok Forged Turnbuckles have grown to become one of the leading turnbuckles found on yacht rigging worldwide.

All turnbuckles are forged and machined from high strength bronze alloy and finished in highly polished chromium.

The aerodynamic design of this turnbuckle provides one of the strongest and most elegant bronze turnbuckles on the world market today.

Sta-Lok supply a wide variety of stainless steel threaded end options to suit all rigging layouts.

The following Sta-Lok Bronze Turnbuckle arrangements are available with 1/4" - 3/4" UNF threads and combine our Bronze Turnbuckle body with our stainless steel end fittings.

Please note:

1. The following pages show a series of different Bronze Turnbuckle arrangements. If you do not see your preferred assembly, you can combine the Bronze Body with any of our Threaded End Fittings (page 48) by matching the UNF Threads

Many elements, including usage, environment and standard of maintenance can affect the lifetime of your rigging. All fittings should be inspected, checked and maintained regularly.

Bronze Body

- The aerodynamic design provides one of the strongest and most elegant bronze turnbuckles on the world market today
- Forged from high strength bronze alloy
- Finished in highly polished chromium



Reference	Thread (UNF)	A (MM)	A (Inch)	Adjustment (MM)	Adjustment (Inch)	Weight (KG)	Weight (LB)	Price (\$)
B19-14	1/4"	114.0	4.488	76.0	2.992	0.060	0.132	36.29
B19-516	5/16"	123.0	4.843	83.0	3.268	0.080	0.176	43.10
B19-38	3/8"	133.0	5.236	92.0	3.622	0.120	0.265	55.01
B19-716	7/16"	152.0	5.984	100.0	3.937	0.160	0.353	71.45
B19-12	1/2"	163.0	6.417	104.0	4.094	0.220	0.485	78.83
B19-58	5/8"	195.0	7.677	126.0	4.961	0.400	0.882	120.79
B19-34	3/4"	255.0	10.039	168.0	6.615	0.800	1.764	219.90

Bronze Eye Toggle & Blank

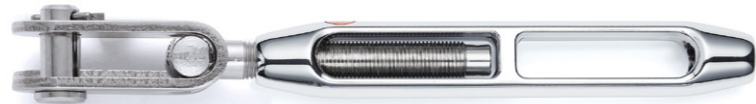
- Supplied with a stainless steel Threaded Eye Toggle (ET18) at one end. See page (51) for toggle dimensions



Reference	Thread (UNF)	Toggle Width (MM)	Toggle Width (Inch)	Toggle Pin (MM)	Toggle Pin (Inch)	Adjustment (MM)	Adjustment (Inch)	Price (\$)
B20 ET-34	3/4"	20.0	0.787	18.5	3/4"	168.0	6.615	437.80

Bronze U-Strap Toggle & Blank

- Provided with Forged U Strap toggle (U18) design for longer chain plates. See page 50 for toggle dimenions



Reference	Thread (UNF)	Toggle Width (MM)	Toggle Width (Inch)	Toggle Pin (MM)	Toggle Pin (Inch)	Adjustment (MM)	Adjustment (Inch)	Price (\$)
UB20-14	1/4"	7.6	0.299	6.4	1/4"	76.0	2.992	59.44
UB20-516	5/16"	9.2	0.362	7.9	5/16"	83.0	3.268	64.17
UB20-38	3/8"	10.8	0.425	9.5	3/8"	92.0	3.622	78.10
UB20-716	7/16"	12.3	0.484	11.1	7/16"	100.0	3.937	95.88
UB20-12	1/2"	13.0	0.512	12.7	1/2"	104.0	4.094	100.54
UB20-58	5/8"	18.0	0.709	16.0	5/8"	126.0	4.961	197.53

Notes:

.....

.....

.....

.....

.....

.....

.....

.....

.....

.....

.....

.....

.....

.....

.....

.....

.....

.....

.....

.....

.....

.....



Sta-Lok Supajust Turnbuckles



Sta-Lok's premium range turnbuckles are machined from high specification solid 316 stainless steel and feature permanently sealed threaded bronze inserts in each end.

The beautiful aesthetics and ingenious performance of the Supajust Turnbuckle carries all the hallmarks of Sta-Lok design and engineering.

Providing distinct advantages over other turnbuckles on the market, the Supajust turnbuckle is designed to ensure superb adjustment, even under high load, without the risk of seizing or galling.

Supajust turnbuckles are available with 3/8" - 1 3/8" UNF threads, with a wide range of end fittings for wire rigging from 5mm (3/16") to 26mm (1").

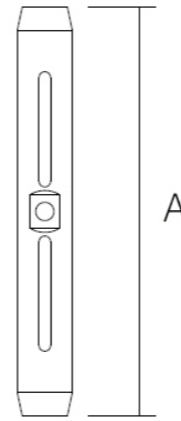
For the most beautiful boats, choose Sta-Lok.

Please note:

1. The following pages show a series of different Supajust Turnbuckle arrangements. If you do not see your preferred assembly, you can combine the Supajust Body with any of our Threaded End Fittings (page 48) by matching the UNF Threads.

"Many elements, including usage, environment and standard of maintenance can affect the lifetime of your rigging. All fittings should be inspected, checked and maintained regularly."

Supajust Body



- High specification stainless steel turnbuckle with threaded bronze inserts permanently sealed in each end
- Superb adjustment, even under high load without the risk of seizing or galling
- Positive locking is achieved with traditional split pins



Reference	Thread (UNF)	A (MM)	A (Inch)	Adjustment (MM)	Adjustment (Inch)	Weight (KG)	Weight (LB)	Price (\$)
S19-12	1/2"	182.0	7.165	98.0	3.858	0.320	0.705	112.85
S19-58	5/8"	210.0	8.268	108.0	4.252	0.640	1.411	195.07
S19-34	3/4"	248.0	9.764	124.0	4.882	0.880	1.940	296.16
S19-78	7/8"	280.0	11.024	144.0	5.669	1.100	2.425	387.70
S19-100	1"	315.0	12.402	174.0	6.850	1.880	4.145	514.21
S19-118	1 1/8"	365.0	14.370	214.0	8.425	3.020	6.658	668.70
S19-114	1 1/4"	441.0	17.362	260.0	10.236	4.460	9.833	915.31
S19-138	1 3/8"	441.0	17.362	260.0	10.236	5.600	12.346	1,703.53

Supajust Eye Toggle & Blank

- Supplied with a Threaded Eye Toggle (ET18) at one end
- See page 51 for toggle dimensions



Reference	Thread (UNF)	Toggle Width (MM)	Toggle Width (Inch)	Toggle Pin (MM)	Toggle Pin (Inch)	Adjustment (MM)	Adjustment (Inch)	Price (\$)
S20 ET-34-16	3/4"	20.0	0.787	16.0	0.630	124.0	4.882	588.72
S20 ET-34	3/4"	20.0	0.787	18.5	3/4"	124.0	4.882	588.72
S20 ET-78-20	7/8"	25.0	0.984	20.0	0.787	144.0	5.669	998.10
S20 ET-78	7/8"	25.0	0.984	21.5	7/8"	144.0	5.669	998.10
S20 ET-100-22	1"	28.0	1.102	22.0	0.866	174.0	6.850	1,221.97
S20 ET-100	1"	28.0	1.102	25.0	1"	174.0	6.850	1,221.97
S20 ET-118	1 1/8"	31.5	1.240	28.2	1 1/8"	214.0	8.425	2,130.28
S20 ET-114	1 1/4"	35.0	1.378	31.5	1 1/4"	260.0	10.236	2,854.37
S20 ET-138	1 3/8"	38.0	1.496	34.6	1 3/8"	260.0	10.236	3,776.67

Supajust U-Strap Toggle & Blank

- Provided with Forged U Strap toggle (U18) design for longer chain plates
- See page 50 for toggle dimensions



Reference	Thread (UNF)	Toggle Width (MM)	Toggle Width (Inch)	Toggle Pin (MM)	Toggle Pin (Inch)	Adjustment (MM)	Adjustment (Inch)	Price (\$)
US20-12	1/2"	13.0	0.512	12.7	1/2"	98.0	3.858	166.73
US20-58	5/8"	18.0	0.709	16.0	5/8"	108.0	4.252	288.47



New Products Added

Sta-Lok now supply downsized pin variations on our 3/4", 7/8" and 1" Supajust Eye Toggle variations.



Sta-Lok Threaded End Fittings



Need that perfect replacement part or can't quite find a turnbuckle arrangement that matches your requirements?

Sta-Lok threaded ends are machined to the highest standard from high specification 316 stainless steel alloys and are perfectly suited for use with our Stainless Steel, Bronze and Supajust turnbuckle bodies.

Our wide range of threaded ends span from 1/4" to 1 3/8" UNF, providing options to suit all yacht rigging layouts.

Generally speaking, the end fittings are supplied as a Left Hand UNF thread where used as a turnbuckle assembly. Where available, the right hand variants are provided.

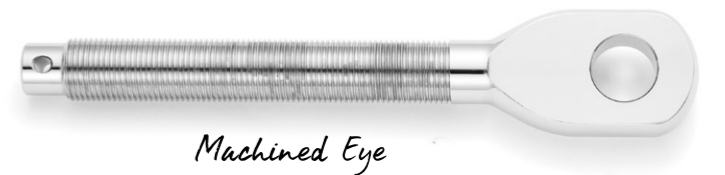
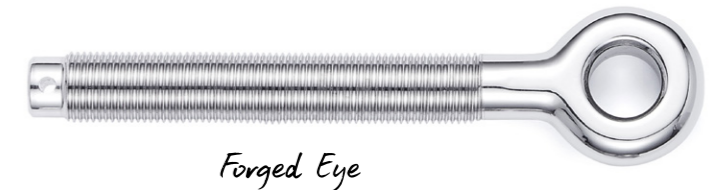
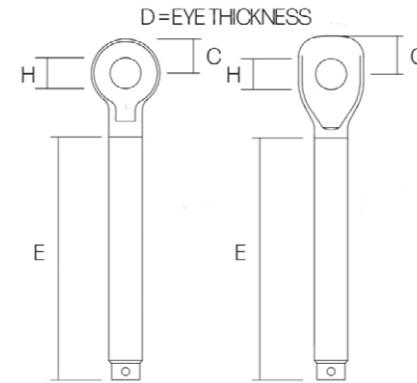
Please note:

1. All Threaded End Fittings are supplied with split pins to ensure positive locking with all open body turnbuckle assemblies
2. Should you require any further dimensional details, please make contact with our sales team

**Many elements, including usage, environment and standard of maintenance can affect the lifetime of your rigging. All fittings should be inspected, checked and maintained regularly.*

Threaded Eye End

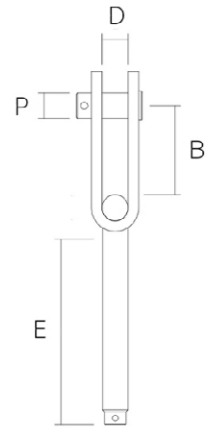
- Suitable for all Sta-Lok turnbuckles
- Left hand thread only
- Supplied with split pin



Reference	Thread (UNF)	C (MM)	C (Inch)	D (MM)	D (Inch)	E (MM)	E (Inch)	H (MM)	H (Inch)	Weight (KG)	Weight (LB)	Price (\$)
Forged												
C770-14	1/4"	8.4	0.331	6.0	0.236	47.0	1.850	6.4	1/4"	0.014	0.031	18.04
C770-516	5/16"	9.5	0.374	6.5	0.256	57.0	2.244	8.0	5/16"	0.020	0.044	19.51
C770-38	3/8"	11.0	0.433	7.8	0.307	68.0	2.677	9.5	3/8"	0.040	0.088	25.17
C770-716	7/16"	12.0	0.472	9.3	0.366	75.0	2.953	11.1	7/16"	0.080	0.176	32.85
C770-12	1/2"	13.5	0.531	11.5	0.453	90.0	3.543	12.7	1/2"	0.120	0.264	42.41
C770-58	5/8"	18.3	0.720	13.6	0.535	100.0	3.937	16.0	5/8"	0.240	0.528	67.58
Machined												
C770-34	3/4"	22.5	0.886	18.0	0.709	128.0	5.039	19.5	3/4"	0.520	1.144	104.36
C770-78	7/8"	25.5	1.004	21.0	0.827	140.0	5.512	22.5	7/8"	0.800	1.760	128.26
C770-100	1"	31.9	1.256	24.4	0.961	156.0	6.142	25.4	1"	1.180	2.596	171.40
C770-118	1 1/8"	36.5	1.437	27.5	1.083	180.0	7.087	28.6	1 1/8"	1.720	3.784	394.11
C770-114	1 1/4"	38.1	1.500	30.5	1.201	215.0	8.465	31.8	1 1/4"	2.480	5.456	431.42
C770-138	1 3/8"	42.9	1.689	33.3	1.311	220.0	8.661	35.0	1 3/8"	2.930	6.446	652.96

Threaded U Strap Toggle End

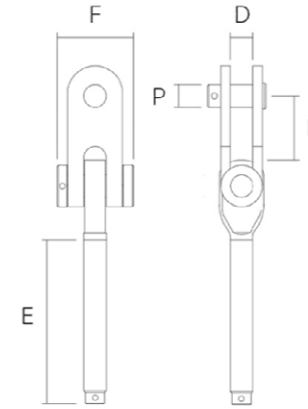
- Full Articulation in two planes
- Manufactured from high specification 316 stainless steel
- Supplied with split pin
- Forged T Design
- Ideal for longer chain plates



Left Hand Reference	Right Hand Reference	Thread (UNF)	B (MM)	B (Inch)	D (MM)	D (Inch)	E (MM)	E (Inch)	P (MM)	P (Inch)	Weight (KG)	Weight (LB)	Price (\$)
U18-14	U15-14	1/4"	20.0	0.787	7.6	0.299	60.0	2.362	6.4	1/4"	0.040	0.088	32.89
U18-516	U15-516	5/16"	25.0	0.984	9.2	0.362	66.0	2.598	7.9	5/16"	0.060	0.132	34.59
U18-38	U15-38	3/8"	28.0	1.102	10.8	0.425	70.0	2.756	9.5	3/8"	0.100	0.220	36.29
U18-716	U15-716	7/16"	32.0	1.260	12.3	0.484	77.0	3.031	11.1	7/16"	0.160	0.352	45.94
U18-12	U15-12	1/2"	34.0	1.339	13.0	0.512	81.0	3.189	12.7	1/2"	0.260	0.572	53.87
U18-58	U15-58	5/8"	43.0	1.693	18.0	0.709	99.0	3.898	16.0	5/8"	0.460	1.012	93.40

Threaded Eye Toggle End

- Elegant design
- Manufactured from high specification 316 stainless steel
- Toggle action allows full articulation in two planes
- Ideal for longer chain plates
- Stronger than the wire ropes



Left Hand Reference	Right Hand Reference	Thread (UNF)	B (MM)	B (Inch)	D (MM)	D (Inch)	E (MM)	E (Inch)	F (MM)	F (Inch)	P (MM)	P (Inch)	Price (\$)
ET18-34-16	ET15-34-16	3/4"	57.4	2.260	20.0	0.787	128.0	5.039	66.0	2.598	16.0	0.630	292.56
ET18-34	ET15-34	3/4"	56.0	2.205	20.0	0.787	128.0	5.039	66.0	2.598	18.5	3/4"	292.56
ET18-78-20	ET15-78-20	7/8"	64.0	2.520	25.0	0.984	140.0	5.512	78.0	3.071	20.0	0.787	610.40
ET18-78	ET15-78	7/8"	63.0	2.480	25.0	0.984	140.0	5.512	78.0	3.071	21.5	7/8"	610.40
ET18-100-22	ET15-100-22	1"	69.4	2.732	28.0	1.102	156.0	6.142	82.0	3.228	22.0	0.866	707.76
ET18-100	ET15-100	1"	67.5	2.657	28.0	1.102	156.0	6.142	82.0	3.228	25.0	1"	707.76
ET18-118	ET15-118	1 1/8"	70.0	2.756	31.5	1.240	180.0	7.087	89.0	3.504	28.2	1 1/8"	1461.58
ET18-114	ET15-114	1 1/4"	79.0	3.110	35.0	1.378	215.0	8.464	98.0	3.858	31.5	1 1/4"	1939.06
ET18-138	ET15-138	1 3/8"	98.0	3.858	38.0	1.496	220.0	8.661	110.0	4.331	34.6	1 3/8"	2,073.15

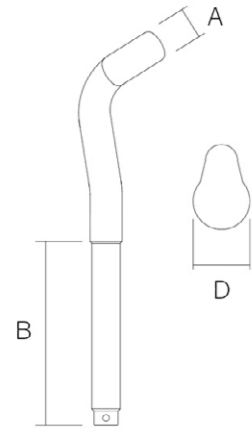


New Products Added

Sta-Lok now supply downsized pin variations on our 3/4", 7/8" and 1" Threaded Eye Toggles.

Threaded Shroud

- Manufactured from high specification 316 stainless steel
- Designed to be used with turnbuckle systems
- Fits N840 backing plates
- Left hand thread only
- Supplied with split pin

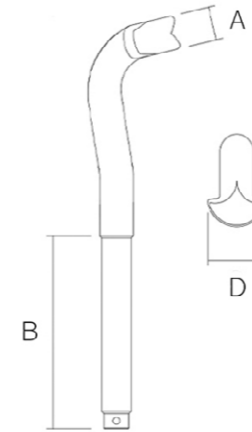


Reference	Thread (UNF)	A (MM)	A (Inch)	B (MM)	B (Inch)	D (MM)	D (Inch)	Weight (KG)	Weight (LB)	Price (\$)
188-12	1/2"	14.4	0.566	90.0	3.625	27.0	1.062	0.220	0.484	114.55
188-858	5/8"	16.0	0.628	90.0	3.625	30.0	1.181	0.280	0.616	131.00
188-1058	5/8"	17.5	0.689	100.0	4.000	32.0	1.259	0.400	0.880	191.68
188-34	3/4"	21.4	0.843	120.0	4.750	38.0	1.496	0.720	1.584	288.59

Notes:

Threaded T

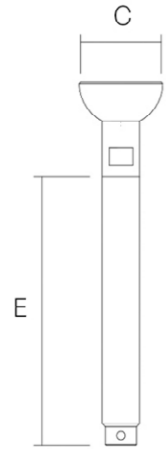
- Manufactured from high specification 316 stainless steel
- Design to be used with turnbuckle systems
- Universal fitting - works with a broad selection of backing plates
- Left hand thread only
- Supplied with split pin



Reference	Thread (UNF)	A (MM)	A (Inch)	B (MM)	B (Inch)	D (MM)	D (Inch)	Weight (KG)	Weight (LB)	Price (\$)
187-14	1/4"	6.3	0.248	48.0	1.889	13.5	0.532	0.020	0.044	52.24
187-516	5/16"	9.0	0.354	57.0	2.244	18.5	0.728	0.060	0.132	58.96
187-38	3/8"	12.6	0.496	62.0	2.440	27.5	1.083	0.120	0.264	64.06
187-716	7/16"	12.6	0.496	67.0	2.638	27.5	1.083	0.140	0.308	69.33
187-12	1/2"	14.2	0.559	80.0	3.150	29.4	1.155	0.180	0.396	70.52
187-58	5/8"	17.8	0.701	100.0	4.000	35.5	1.398	0.400	0.880	170.58

Threaded Stemball

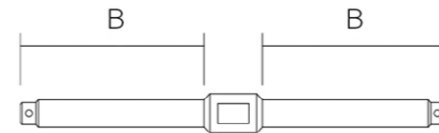
- Suitable for all Sta-Lok turnbuckles
- Manufactured from high specification 316 stainless steel
- If Stemball Cups are required please see Product Reference - 042C, page 68
- Left hand thread only



Reference	Thread (UNF)	C (MM)	C (Inch)	E (MM)	E (Inch)	Weight (KG)	Weight (LB)	Price (\$)
186-14	1/4"	14.6	0.575	57.0	2.244	0.020	0.044	19.85
186-516	5/16"	18.0	0.709	63.0	2.480	0.040	0.088	22.68
186-516Z	5/16"	13.2	0.520	63.0	2.480	0.040	0.088	22.68
186-38	3/8"	20.3	0.799	69.0	2.717	0.060	0.132	29.49
186-716	7/16"	20.3	0.799	75.0	2.953	0.100	0.220	36.29
186-12	1/2"	26.0	1.024	80.0	3.150	0.140	0.308	47.64
186-58	5/8"	27.0	1.063	98.0	3.858	0.220	0.484	78.83
186-34	3/4"	28.0	1.102	128.0	5.039	0.380	0.836	123.01
186-78	7/8"	34.0	1.339	140.0	5.512	0.640	1.408	264.68
186-100	1"	39.5	1.556	156.0	6.141	0.980	2.156	371.37
186-118	1 1/8"	54.8	2.156	182.0	7.165	1.540	3.388	634.30

Turnbuckle Extension Bar

- Maximise the adjustment on backstays and cap shrouds by joining two turnbuckles
- Manufactured from high specification 316 stainless steel
- Will assemble with standard open and closed body turnbuckles
- UNF Threads - left hand one end and right hand the other
- Supplied with split pins

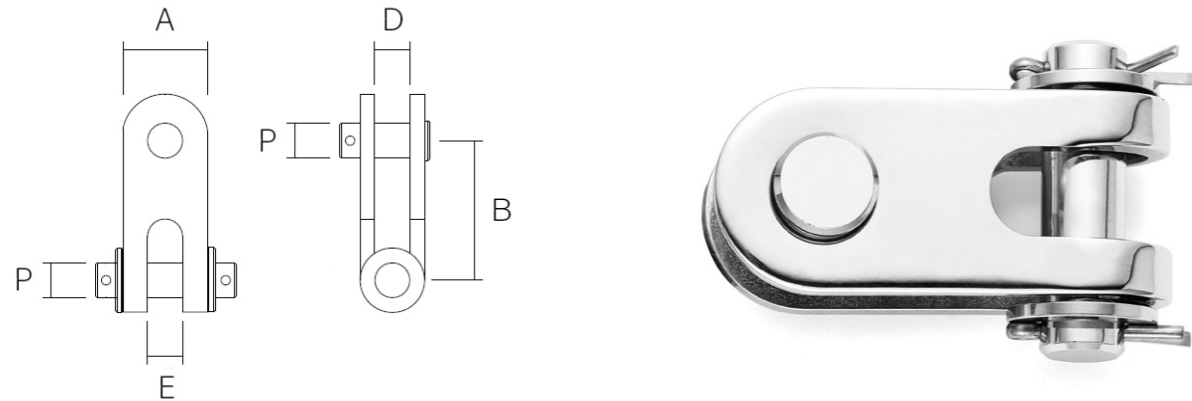


Reference	Thread (UNF)	B (MM)	B (Inch)	Weight (KG)	Weight (LB)	Price (\$)
C280-716	7/16"	75.0	2.953	0.140	0.309	82.23
C280-12	1/2"	81.0	3.189	0.220	0.485	99.24
C280-58	5/8"	100.0	3.937	0.340	0.750	150.28
C280-34	3/4"	135.0	5.315	0.640	1.411	203.47
C280-78	7/8"	140.0	5.512	0.860	1.896	229.70
C280-100	1"	156.0	6.142	1.260	2.778	269.93



Double Jaw Toggle

- Manufactured from high specification 316 stainless steel
- Designed to overcome small additional length requirements on existing cable assemblies
- Use with turnbuckle forks to provide full articulation



Ref	A (MM)	A (Inch)	B (MM)	B (Inch)	D (MM)	D (Inch)	E (MM)	E (Inch)	P (MM)	P (Inch)	Weight (KG)	Weight (LB)	Price (\$)
DJT-14	16.0	0.630	20.0	0.787	7.6	0.299	6.7	0.264	6.4	1/4"	0.020	0.044	41.40
DJT-516	19.0	0.748	25.0	0.984	9.2	0.362	8.3	0.327	7.9	5/16"	0.060	0.132	43.10
DJT-38	22.2	0.875	28.0	1.102	10.8	0.425	9.9	0.390	9.5	3/8"	0.080	0.176	44.80
DJT-716	28.6	1.126	32.0	1.260	12.3	0.484	11.5	0.453	11.1	7/16"	0.120	0.264	60.11
DJT-12	32.0	1.260	34.0	1.339	13.0	0.512	13.0	0.512	12.7	1/2"	0.180	0.396	69.19
DJT-58	38.1	1.500	52.0	2.047	18.0	0.709	16.3	0.642	16.0	5/8"	0.360	0.792	100.38
DJT-34	48.0	1.890	81.0	3.189	20.0	0.790	19.5	0.768	18.5	3/4"	0.900	1.980	186.56
DJT-78	60.0	2.362	92.0	3.622	25.0	1.000	23.0	0.906	21.5	7/8"	1.420	3.124	408.10
DJT-100	64.0	2.520	99.0	3.898	28.0	1.130	26.0	1.024	25.0	1"	1.860	4.092	635.47
DJT-118	70.0	2.756	105.0	4.134	31.5	1.250	29.0	1.142	28.2	1 1/8"	2.850	6.270	943.88
DJT-114	80.0	3.150	119.0	4.685	35.0	1.375	34.0	1.339	31.5	1 1/4"	4.020	8.844	1,174.75
DJT-138	90.0	3.543	140.0	5.512	38.0	1.500	35.0	1.378	34.6	1 3/8"	5.430	11.946	1,594.51

Eye & Jaw Bar Toggle

- Manufactured from high specification 316 stainless steel
- Designed to overcome small additional length requirements on existing cable assemblies
- Use with turnbuckle forks to provide full articulation



Ref	A (MM)	A (Inch)	B (MM)	B (Inch)	C (MM)	C (Inch)	D (MM)	D (Inch)	H (MM)	H (Inch)	P (MM)	P (Inch)	Weight (KG)	Weight (LB)	Price (\$)
S-14BT	29.1	1.146	13.2	0.520	6.0	0.236	6.4	0.252	6.4	1/4"	6.2	1/4"	0.020	0.044	32.89
S-516BT	38.6	1.520	14.7	0.580	7.4	0.290	7.9	0.311	7.9	5/16"	7.7	5/16"	0.060	0.132	35.16
S-38BT	49.1	1.933	17.5	0.687	8.9	0.349	9.5	0.375	10.0	3/8"	9.3	3/8"	0.080	0.176	44.80
S-716BT	60.4	2.378	21.9	0.861	10.4	0.409	11.1	0.437	11.4	7/16"	10.9	7/16"	0.120	0.265	66.35
S-12BT	74.1	2.917	27.4	1.080	12.0	0.500	12.7	0.500	13.0	1/2"	12.6	1/2"	0.180	0.397	116.26
S-58BT	81.6	3.213	29.2	1.150	13.5	0.531	15.9	0.626	16.0	5/8"	15.6	5/8"	0.360	0.794	147.45
S-34BT	92.2	3.630	33.3	1.311	18.4	0.724	19.1	0.752	19.1	3/4"	18.5	3/4"	0.900	1.984	362.04
S-78BT	110.6	4.354	38.1	1.500	20.0	0.788	22.2	0.874	22.2	7/8"	21.5	7/8"	1.420	3.131	406.93
S-100BT	121.3	4.776	40.0	1.576	23.5	0.925	25.4	1.000	25.4	1"	25.0	1"	1.860	4.101	522.37
S-118BT	148.4	5.843	50.0	1.970	27.0	1.062	28.6	1.125	28.6	1 1/8"	28.2	1 1/8"	2.850	6.283	669.28
S-114BT	174.6	6.875	60.0	2.362	30.7	1.210	32.0	1.260	31.8	1 1/4"	31.5	1 1/4"	4.020	8.863	837.77
S-138BT	185.0	7.282	70.0	2.756	33.3	1.311	35.0	1.378	35.0	1 3/8"	34.6	1 3/8"	5.430	11.971	1,023.75

Sta-Lok Guard Rail & Life Line Fittings



For your safety and peace of mind. Sta-Lok have designed an extensive range of guard rail and lifeline hardware.

Our wide range of 316 stainless steel hardware is designed to fit 3mm (1/8") to 6mm (1/4") stainless steel wire.

Sta-Lok Guard Rail & Life Line Fittings are designed to fit most pushpit / pulpit designs on both sailing yachts and powerboats alike.

This range of fittings is also perfect for commercial or architectural balustrading infill projects.

Please note:

1. Guard Rail and Life Line Fittings should not be used for yacht standing rigging
2. All fittings are designed for machine swaging

**Many elements, including usage, environment and standard of maintenance can affect the lifetime of your rigging. All fittings should be inspected, checked and maintained regularly.*

Life Line Stud

- Manufactured from 316 stainless steel
- Machine Swaged
- To be used with life line fittings only
- Available for INCH Wire only
- For use with all Lifeline Turnbuckles and Pelican Hooks



Left Hand Reference	Right Hand Reference	Wire Size (Inch)	Thread (UNF)	Thread Length	Weight (KG)	Weight (LB)	Price (\$)
LS-03-14X112L	LS-03-14X112R	1/8"	1/4"	1 1/2"	0.012	0.026	9.07
	LS-04-14X214R	5/32"	1/4"	2 1/4"	0.019	0.042	9.07
	LS-04-516X238R	5/32"	5/16"	2 3/8"	0.027	0.059	10.21
LS-05-14X214L	LS-05-14X214R	3/16"	1/4"	2 1/4"	0.023	0.051	11.34
LS-05-516X238L	LS-05-516X238R	3/16"	5/16"	2 3/8"	0.031	0.068	11.34
	LS-06-516X238R*	1/4"	5/16"	2 3/8"	0.045	0.099	20.42
	LS-06-38X234R*	1/4"	3/8"	2 3/4"	0.055	0.112	20.42

*Use 7/32" swaging dies.

Pelican Hook with Life Line Stud

- Designed specifically for lifelines
- Supplied with lifeline stud and right nut
- Manufactured from 316 stainless steel
- The ultimate life line gate solution
- Available for INCH Wire only
- For machine swaging



Reference	Wire Size (Inch)	Thread (UNF)	Weight (KG)	Weight (LB)	Price (\$)
PH LS-03	1/8"	5/16"	0.158	0.348	53.31
PH LS-04	5/32"	5/16"	0.159	0.350	53.87
PH LS-05	3/16"	5/16"	0.160	0.353	56.71
PH LS-06*	1/4"	5/16"	0.161	0.355	61.81

*Use 7/32" swaging dies.

Life Line Turnbuckle with Stud

- Manufactured from 316 stainless steel
- Open body forged bronze, chromium plated turnbuckle body
- Supplied with Life Line Stud
- Available for INCH Wire only

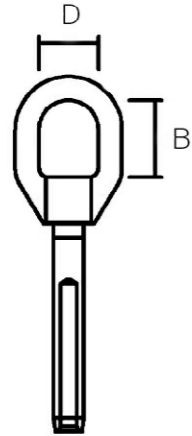


Reference	Wire Size (Inch)	Thread (UNF)	Pin (MM)	Pin (Inch)	Weight (KG)	Weight (LB)	Price (\$)
UB25LL-03	1/8"	1/4"	6.4	1/4"	0.100	0.220	68.51
UB25LL-144	5/32"	1/4"	6.4	1/4"	0.100	0.220	68.51
UB25LL-04	5/32"	5/16"	7.9	5/16"	0.160	0.353	74.38
UB25LL-145	3/16"	1/4"	6.4	1/4"	0.117	0.258	70.78
UB25LL-5165	3/16"	5/16"	7.9	5/16"	0.160	0.353	75.22
UB25LL-06516*	1/4"	5/16"	7.9	5/16"	0.183	0.403	84.58
UB25LL-06*	1/4"	3/8"	9.5	3/8"	0.422	0.930	98.51

*Use 7/32" swaging dies.

Single Gate Eye

- Designed specifically for guard rails and lifelines
- Provided with life line stud (Machine Swaged)
- Available for INCH Wire only



Reference	Wire Size (Inch)	B (MM)	B (Inch)	D (MM)	D (Inch)	Weight (KG)	Weight (LB)	Price (\$)
GE1LS-03	1/8"	19.4	0.764	16.0	0.625	0.020	0.044	20.98
GE1LS-04	5/32"	19.4	0.764	16.0	0.625	0.022	0.048	22.68
GE1LS-05	3/16"	19.4	0.764	16.0	0.625	0.025	0.055	23.82

Swivel Gate Eye

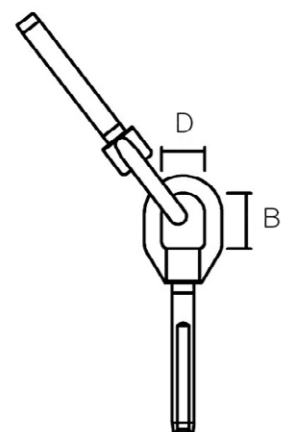
- Designed specifically for guard rails and lifelines
- Provided with life line stud (Machine Swaged)
- Available for INCH Wire only



Reference	Wire Size (Inch)	Weight (KG)	Weight (LB)	Price (\$)
SGE1LS-03	1/8"	0.020	0.044	20.98
SGE1LS-04	5/32"	0.022	0.048	22.68
SGE1LS-05	3/16"	0.025	0.055	23.82

Interlocking Gate Eye (Threaded)

- Designed specifically for guard rails and lifelines
- Provided with life line stud (Machine Swaged)
- Available for INCH Wire only



Reference	Wire Size (Inch)	B (MM)	B (Inch)	D (MM)	D (Inch)	Weight (KG)	Weight (LB)	Price (\$)
GE2 LS-03	1/8"	19.4	0.764	16.0	0.625	0.240	0.528	41.97
GE2 LS-04	5/32"	19.4	0.764	16.0	0.625	0.260	0.572	45.37
GE2 LS-05	3/16"	19.4	0.764	16.0	0.625	0.300	0.660	46.50

Toggle Jaws

- Manufactured from 316 stainless steel
- Machine Swaged
- Provides full articulation
- Available for INCH Wire only

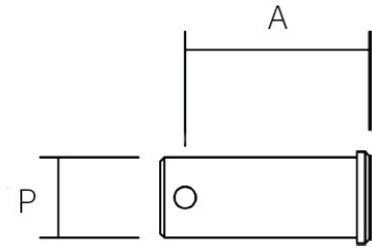


Reference	Wire Size (Inch)	Pin (Inch)	Weight (KG)	Weight (LB)	Price (\$)
132LL-03	1/8"	1/4"	0.017	0.037	15.88
132LL-04	5/32"	1/4"	0.018	0.039	17.01
132LL-05	3/16"	1/4"	0.020	0.044	17.01
132LL-05516	3/16"	5/16"	0.023	0.051	24.39
132LL-06516*	1/4"	5/16"	0.026	0.057	27.22
132LL-06*	1/4"	3/8"	0.030	0.066	27.22

*Use 7/32" swaging dies.

Sta-Lok Fork Pin

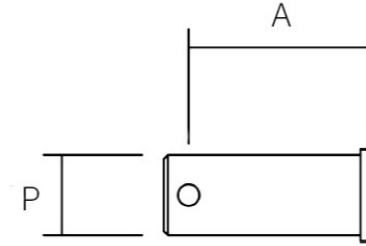
- Manufactured from 316 Stainless Steel
- Replacement pin for Sta-Lok Fork, product reference (034)



Reference	A (MM)	A (Inch)	P (MM)	P (Inch)	Pack (Quantity)	Weight per pack (KG)	Weight per pack (LB)	Price (\$)
037-03	155	0.610	5.0	3/16"	5	0.100	0.220	48.36
037-04	175	0.689	6.4	1/4"	5	0.200	0.441	48.36
037-05	206	0.811	8.0	5/16"	5	0.300	0.661	61.93
037-06	270	1.063	10.9	7/16"	5	0.600	1.323	89.14
037-07	270	1.063	10.9	7/16"	5	0.600	1.323	89.14
037-08	341	1.343	12.6	1/2"	2	0.128	0.282	39.39
037-10	373	1.469	15.6	5/8"	2	0.280	0.617	48.22
037-12	476	1.874	18.5	3/4"	1	0.120	0.265	48.39
037-14	508	2.000	21.5	7/8"	1	0.160	0.353	125.61
037-16	540	2.126	21.5	7/8"	1	0.180	0.397	132.81
037-19	667	2.626	27.0	11/16"	1	0.392	0.864	170.03
037-22	801	3.187	31.5	11/4"	1	0.680	1.500	216.05
037-26	960	3.781	34.6	13/8"	1	0.890	1.962	245.82

Strap Toggle Pin

- Manufactured from 316 Stainless Steel
- Replacement pin for Strap Toggles, product reference (038, B15, B18)



Reference	A (MM)	A (Inch)	P (MM)	P (Inch)	Pack (Quantity)	Weight per pack (KG)	Weight per pack (LB)	Price (\$)
057-03	12.7	0.500	6.4	1/4"	5	0.125	0.276	40.63
057-04	15.5	0.610	7.9	5/16"	5	0.225	0.496	35.75
057-05	17.5	0.689	9.5	3/8"	5	0.400	0.882	37.88
057-06	20.2	0.795	11.1	7/16"	5	0.550	1.213	49.52
057-08	23.8	0.937	12.7	1/2"	2	0.128	0.282	19.82
057-10	31.0	1.220	16.0	5/8"	2	0.240	0.529	26.51
057-12	38.1	1.500	18.5	3/4"	1	0.101	0.223	22.40
057-14	42.0	1.654	21.5	7/8"	1	0.160	0.353	31.60

Terms & Conditions

1. DEFINITIONS

In these Terms & Conditions, unless the context otherwise requires:

“The Company” means Sta-Lok Terminals Ltd of The Forge, Mistley Heath, Manningtree, Essex CO11 2QH.

“The Customer” means the person, firm or company to whom the Company supplies Goods under the Contract.

“The Contract” means the contract entered into between the Company and the Customer in relation to the Goods supplied, and

“The Goods” means the goods which the company is to supply to the Customer under the Contract.

2. GENERAL

2.1 The Company supplies the Goods on these Terms & Conditions only. Accordingly these Terms and Conditions shall apply to all orders for the Goods which are received from the Customer and (save as shall have been expressly agreed in writing by a director of the Company) shall prevail over any conditions of contract which the Customer may seek to impose. No variation of, or addition to, these Terms & Conditions and no representations about the Goods will be binding on the Company unless made in writing and signed by a director of the Company.

2.2 Any reference in these Terms & Conditions to any provision of an Act of Parliament or statutory instrument shall be construed as a reference to that provision as amended, re-enacted or extended from time to time.

2.3 The headings in these Terms & Conditions are set out for convenience only and shall have no effect on the interpretation of the individual clauses.

3. THE SCOPE OF CONTRACT

3.1 The Contract does not become binding upon the Company until the Company has issued a written acceptance of the Customer's order.

3.2 The Company's obligations under the Contract shall be limited to supplying the Goods contemplated by the Customer's order together with any variations thereof and additions thereto, which may subsequently be agreed. The Customer must give the Company reasonable notice of any variations and additions that are required.

4. PRICE

4.1 Subject as hereinafter provided, the price payable by the Customer for the Goods shall reflect the Company's price list from time to time in force in relation to the Customer except where the Company has issued a written quotation to the Customer, in which case the price or prices referred to in that quotation shall prevail,

4.2 The Company does however reserve the right to increase the price payable in order to reflect any agreed variations or additions to the Customer's requirements and any increases in production costs, which may be incurred by the Company between the date of the Customer's order and the date of despatch. In no circumstances shall any increase in the Contract price entitle the Customer to cancel its order or to repudiate the Contract but the Customer shall be entitled to receive notification of any such increases as soon as possible after their occurrence.

4.3 Unless expressly included in any quote given to the Customer, the Company shall be entitled to recover from the Customer as an additional item at cost all transportation, insurance, storage and other associated costs and charges which are incurred by the Company in delivering the Goods in accordance with the Customer's order, including any additional costs and charges which may be incurred by the Company in the event of the Customer for any reason failing or being unable to accept delivery of the Goods when tendered or causing despatch or delivery to be withheld through the non-payment of any sum due to the Company.

4.4 Unless otherwise indicated, all prices listed or quoted are exclusive of any applicable Value Added or other relevant sales taxes, which the Company reserves the right to levy at the prevailing rate on all amounts actually charged to the Customer.

5. PAYMENT

5.1 Payment of sums due under the Contract shall be made by the Customer nett within 30 days of invoice, unless the Company has requested alternative terms of payment in which case payment should be made on the terms then requested. The Company shall be entitled to invoice the Customer for each consignment despatched at any time on or after the date of despatch.

5.2 In the event that payment is not made by the due date, the Company shall be entitled to charge the Customer interest on any overdue amounts at the rate of 2% per month (or at such other rate as maybe advised by the Company from time to time) for each month or part month during which the said amounts are to remain overdue (both before and after any judgement).

5.3 Payment on or before the due date is of the essence of the Contract. Accordingly the Company shall upon notice to the Customer be entitled to withhold delivery and/or suspend the performance of the Contract generally if at the time of the notice payment of any amount stated on any of the Company's invoices (whether related to the Contract or not) is then overdue. If the Customer fails within 14 days of notice to settle the amount outstanding under the said invoices, then the Company shall be entitled to terminate the Contract without further notice.

5.4 The Customer shall not be entitled to retain, deduct or defer any sums whatsoever due to the Company under the Contract on account of any dispute cross claim or set off which it might have with the Company or with any company in the same group of companies as the Company.

6. DELIVERY

6.1 The performance of the Contract is subject to availability, and therefore in the event that it is unable to supply any specific Goods or any specific quantities of Goods, the Company reserves the right to provide suitable alternatives or suitable alternative quantities, and to make such reasonable adjustments (upwards or downwards) to the Contract price as are necessary to reflect the change. Such alterations shall not entitle the Customer to repudiate the Contract.

6.2 Unless otherwise indicated, and subject to the provisions of clause 4.3, the Company shall be responsible for arranging delivery of Goods to the Customer's premises. Accordingly the Customer undertakes to provide a safe and convenient access for the Company's delivery vehicles (or those of its agents) at each delivery point together with safe facilities for the loading and unloading of the Goods (including any assistance in loading and unloading that may be required). The placing of an order by the Customer shall be deemed to constitute authority for the Company's delivery vehicles (or those of its agents) to enter the Customer's premises where necessary and it shall be the responsibility of the Customer to supervise the safe discharge of each load.

6.3 Any time estimates or delivery dates given by the Company shall be by way of guidance only and shall not be of the essence of the Contract. Accordingly any delay in delivery shall not entitle the Customer to repudiate the Contract and the Company shall not be liable to the Customer (either in contract or tort) for any loss or damage whatsoever (including consequential losses, loss of profit and other losses of a similar nature) which may be suffered or sustained by it as a result of any failure by the Company to adhere to any time estimate or delivery date given.

6.4 If for any reason the Company still fails to deliver the Goods within any reasonable time limit specified by the Customer at any time after the Customer has purported to make time of the essence of the Contract, and a Court or any other arbiter subsequently finds the Company to be responsible for any loss or damage suffered by the Customer as a result thereof, the Company's liability therefore (both in contract and tort) shall be strictly limited to the excess (if any) of the cost to the Customer (over and above the Contract price) of obtaining similar goods (in the cheapest available market) to replace those not delivered.

6.5 Without prejudice to any of the above the Company shall be entitled to deliver the Goods by single delivery or instalment at its option and, whenever the Goods are delivered, or are to be delivered, by instalments, the Company shall be entitled to treat each delivery as a separate contract. Accordingly any failure by the Company to make one delivery (in whole or in part) shall not entitle the Customer to terminate any other contract or refuse any other deliveries.

7. OWNERSHIP AND RISK

7.1 Unless otherwise indicated, the risk of damage to the Goods shall pass to the Customer upon delivery to the Customer or its agents

7.2 However, title to the goods shall not pass to the Customer until the Company has received payment in full of all sums due from the Customer under the Contract together with any interest accrued thereon and other charges. In the meantime, the Company shall retain full legal and beneficial title to the Goods and the Customer shall (a) hold the goods in a fiduciary capacity as the Company's bailee free from any charge, lien or other encumbrance, (b) shall keep the Goods fully insured with a reputable insurer, and (c) shall store the Goods separately in such a way that they can be clearly identified as the Company's property. In this period the Company shall be entitled to recover possession of the Goods (or any of them) at any time and for any reason whatsoever and shall be entitled without restriction to lawfully enter upon the premises to the customer for the purposes of removing the Goods. The customer shall pay all costs and expenses incurred by the Company in exercising this right.

7.3 If, pending the passing title in the Goods, the Customer sells or otherwise disposes of the Goods in such manner as to pass valid title to a third party, the Customer shall hold the full proceeds of such a sale (and pending payment the right to receive the proceeds of such a sale) on trust for the Company in a separate and identifiable bank account.

During the same period, the Customer will pay the said proceeds to the Company on demand notwithstanding that any period of credit extended to the Customer may not have expired. In addition the Customer agrees that it will assign to the Company upon the Company's request all of its rights (under such a contract of sale) against any subsequent purchaser of the Goods.

7.4 Notwithstanding that title may not have passed to the Customer, the Company may maintain an action for the price of the Goods supplied. The Customer acknowledges that nothing in clauses 7.2 and 7.3 above confers any right upon the Customer to return or reject the Goods supplied or to refuse, defer or delay payment for them.

8. LIEN

8.1 The Company shall (without prejudice to any other remedy available to it) have in respect of all unpaid debts and other sums due from the Customer under the Contract a general lien on any goods and property whatsoever in its possession (whether in relation to the contract or otherwise) which are or intended to become the property of the Customer.

8.2 Pursuant to that lien, the Company shall be entitled upon fourteen days written notice to the Customer to sell any goods or property so held upon such items as it thinks fit, and to keep the proceeds of the sale thereof in diminution of the debts, the other sums due and all costs and expenses incurred in or about effecting the sale.

9. CANCELLATION OF ORDERS

Orders for Goods which have been accepted by the Company may not be cancelled or suspended without the Company's prior written consent which consent the Company may give or withhold in its absolute discretion.

10. INVALIDITY OF ANY CONTRACTUAL TERM

If any clause or sub-clause or part thereof contained in these Terms and Conditions is held by any court or other competent authority to be invalid or unenforceable in whole or in part, the validity of the remainder of the clause or sub-clause and of the remaining clauses and sub-clauses of these Terms and Conditions shall not be affected thereby.

11. WAIVER

No waiver by the Company of any particular default or breach of Contract by the Customer shall be considered as a waiver of any subsequent default or breach of the same or of any other provision of the Contract.

12. ASSIGNMENT

The Customer may not assign the benefit or burden of the Contract without the written consent of the Company which the Company may give or withhold in its absolute discretion.

13. FORCE MAJEURE

In the event that the normal course of the Contract is frustrated, prevented, interrupted, hindered, delayed or rendered unduly expensive in any way whatsoever through war, rebellion, civil commotion, strike, lock-out or industrial dispute, fire, explosion, earthquake, act of God, flood, drought or bad weather, the unavailability or late delivery of supplies, the inability to secure labour or by any other cause whatsoever beyond the Company's control, the Company shall promptly give notice thereof to the Customer and shall have the right to cancel the Contract or defer its performance for as long as such force majeure shall continue.

14. PROPER LAW

The construction validity and performance of the Contract shall be governed by English Law and all disputes or questions which may arise out of, or in connection with, or in relation to the Contract shall be decided by the English Courts.

15. WARRANTIES AND LIMITATION OF LIABILITY

15.1 All Goods are sold on the basis that the Customer is neither a consumer nor deals as a consumer within the meaning of the Unfair Contract Terms Act 1977. Where the Goods are supplied under a consumer transaction, the statutory rights of the Customer shall be unaffected by anything set out in these Terms and Conditions.

15.2 The Company hereby warrants that the Goods are at the date of delivery free from any material defect in workmanship and will remain free from any material defect in workmanship and materials for a period of 2 years from the date of delivery to the Customer and correspond with any agreed written specification but the Company's liabilities under this warranty shall be limited to making available free of charge the labour and materials required to make good any such defects or (at the Company's option) replacing any defective Goods. The Company's liability under this warranty is also subject to the following conditions and limitations:

- The Company will not accept any liability for any defective or faulty Goods supplied, unless the Customer gives the Company written notice of the defect or defects in question within 90 days of delivery (save where the defect or defects are of a nature which would not normally be apparent upon a reasonable inspection, in which case the notice of defect or defects must be given within 14 days of discovering the same);
- The Company will not accept any liability for goods damaged in transit unless the Customer gives it written notice of the damage within 5 working days of delivery;
- The Goods having been properly stored and used by the Customer prior to the defect occurring;
- The Company will not accept any liability whatsoever in relation to any goods which have been fitted incorrectly or subjected to any incorrect, abnormal or improper load use accident or unauthorised modification, repair or application, whether by the Customer or any third party;
- The goods having been used in accordance with the Company's instructions whether written or oral;
- The Goods having been subjected to proper and adequate inspection after installation and properly maintained in accordance with the Company's guidelines;
- The Goods having been returned at the Company's request but at the Customer's expense for inspection; and
- The Company having received the total price for the Goods by the due date for payment. Without prejudice to the provisions of clause 7.1 above, all goods which are returned to or replaced by the Company, shall become the property of the Company.

15.3 The warranty contained in clause 15.2 is given in lieu of and shall be deemed to exclude all other warranties and conditions whether express or implied whether arising by common law, statute or otherwise to the fullest extent permitted by law, other than that relating to title to the Goods. The warranty contained in clause 15.2 does not extend to parts, materials or equipment not manufactured by the Company, in respect of which the Customer shall only be entitled to the benefit of any such warranty or guarantee as is given by the manufacturer to the Company.

The warranty contained in clause 15.2 does not extend to cosmetic defects occurring after supply. In corrosive atmospheres stainless steel parts may show discolouration.

15.4 Save as provided under the Unfair Contract Terms Act 1977 and as mentioned in this clause 15, all liability (both in contract and in tort) of the Company for any consequential losses, loss of profit and other losses of a similar nature which may be suffered or sustained by the Customer in connection with the contract and/or the quality or performance of the goods supplied there under is excluded to the fullest extent permitted by law.

15.5 All Goods are sold on the basis that the Customer has satisfied itself as to the suitability of the Goods for use or resale in accordance with its own specialised knowledge and skill and the Customer acknowledges that it has not placed any reliance upon the skill or judgement of the Company or of any of the Company's servants or agents. In the case of export orders, it is also the Customer's responsibility to ensure that the Goods comply with any legislation or regulations relating to their use in the country in question and the Company shall not therefore incur any liability whatever in respect thereof. The Company shall not be under any liability in respect of any defect arising from fair wear and tear, wilful damage or arising from any drawing, design or specification supplied by the Customer.

15.6 The Customer agrees to indemnify the Company against all claims relating to Goods sold to the Customer in respect of any loss damage or expense, whether direct or consequential, sustained by any third party save only in respect of death or personal injury caused by the negligence of the Company or any of its employees, agents or sub-contractors.

15.7 Notwithstanding the above provisions, the Company does not exclude or restrict its liability for death or personal injury caused by its negligence or that of its employees, agents or subcontractors.

15.8 Some states do not permit some of the limitations or exclusions noted above, so some of them may not apply to the Customer.

16. RETURNS

16.1 Rigging hardware manufactured by Sta-Lok is guaranteed at the time of shipment, to be free of defects in material and craftsmanship and only when used for the purpose intended.

16.2 Returned goods will not be accepted without notification and prior approval by Sta-Lok Terminals Ltd.

16.3 All returns must be prepaid and in a re-saleable condition before a credit can be issued. We reserve the right to make a re-stocking charge of 25%.

16.4 Items that have been manufactured to specific requirements, including but not limited too, Wire Rope Assemblies and Tie Rod Assemblies cannot be refunded.

STA-LOK®

The Forge, Mistley Heath,
Manningtree, Essex CO11 2QH
England

Contact us:

+44 (0) 1206 390773
enquiries@stalok.com

USA Office:

+1 910 259 3394
usa@stalok.com

Follow us on:



STA-LOK[®]